

IN THE CITY OF RIVERSIDE

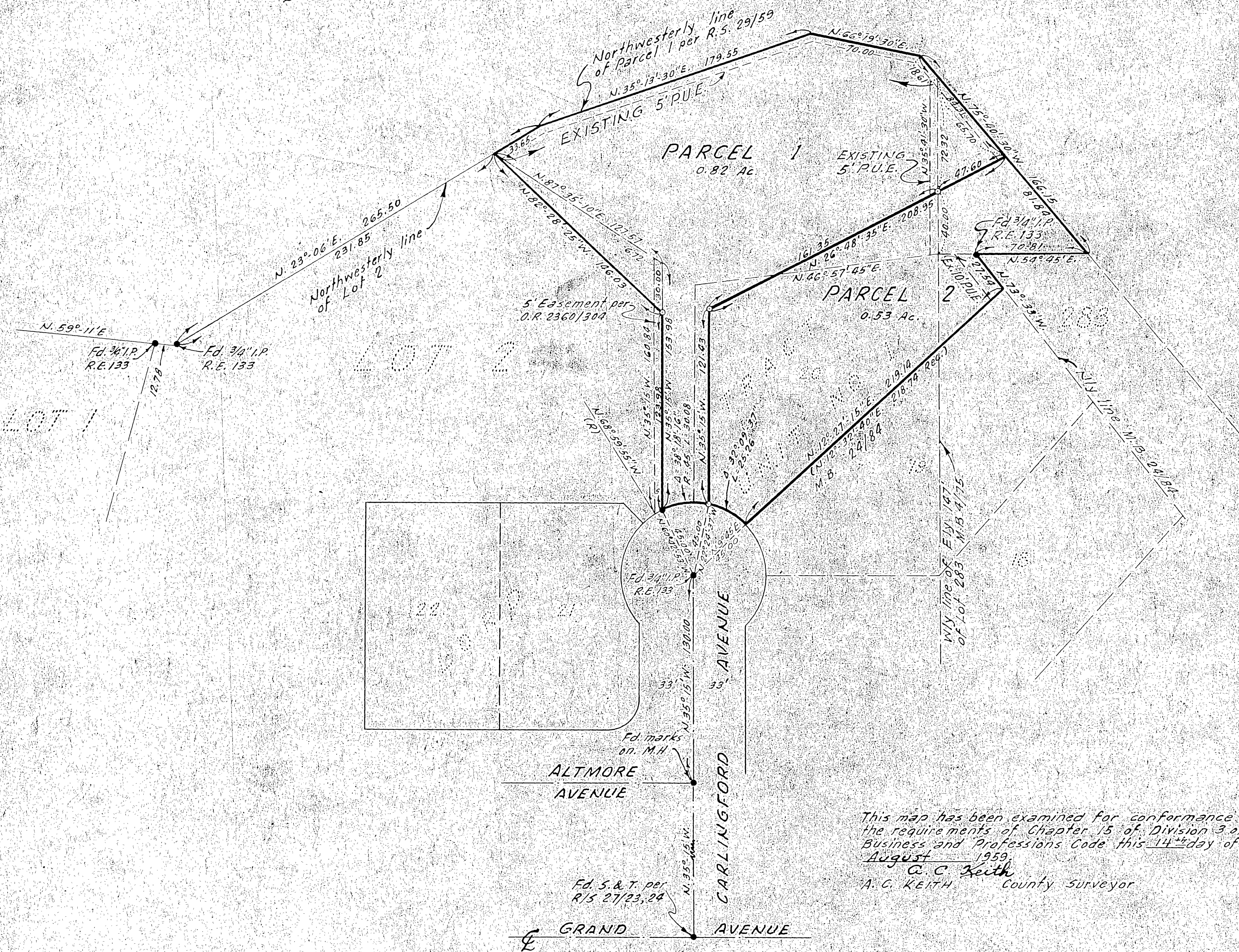
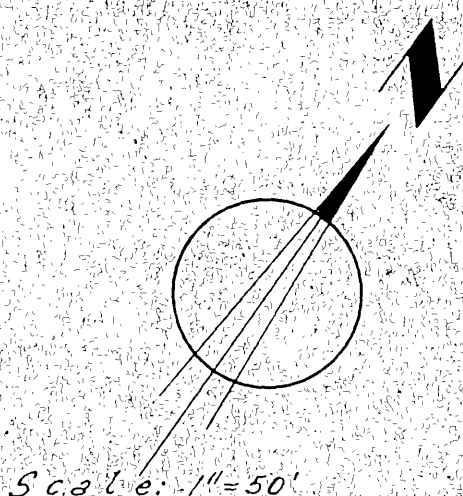
RECORD OF SURVEY

OF A PORTION OF LOT 2 OF MAPS OF ADDITION NO. 1 TO GRAND AVENUE TRACT PER M.B. 6 PAGE 90, A PORTION OF LOT 20 OF LORD TRACT UNIT NO. 1 PER M.B. 24 PAGE 84, AND A PORTION OF LOT 283 OF THE CORRECTED MAP OF ADDITIONS TO MAPS OF THE LANDS OF R. L. & I. CO. PER M.B. 4 PAGE 75, ALL RIVERSIDE COUNTY RECORDS.

BY
ALBERT A. WEBB ASSOCIATES
CIVIL ENGINEERS
MAY 1959

Filed for Record at request of County Surveyor this
14th day of August 1959 at 2:15 P.M. in
Book 30 of Records of Survey at Page 36
Fee \$1.00 No.
JACK A. ROSS County Recorder

By O. O. Neat Deputy



This map has been examined for conformance with the requirements of Chapter 15 of Division 3 of the Business and Professions Code this 14th day of August 1959.
A. C. Keith
County Surveyor

This map correctly represents a survey made by me or under my direction in conformance with the requirement of Chapter 15 of Division 3 of the Business and Professions Code at the request of Ferdinand W. Brinkman in May 1959.

Ernest H. Webb
R.C.E. 9876

This Record of survey was approved by the City Council of the City of Riverside, California on the 23rd day of June 1959.

Virginia Strickland
City Clerk of the City of Riverside, California

- ENGINEER'S NOTES:-
1. Basis of Bearing is the centerline of Carl Klingford Avenue taken as N. 35° 15' W. as same is shown by map of Lord Tract Unit No. 1 on file in Book 24 of Maps at page 84 thereof, Records of Riv. Co., California.
 2. Found monuments as noted at all points shown thus ●
 3. Set 3/4" I.P. tagged R.E. 9876 at all points shown thus ○