

IN THE CITY OF RIVERSIDE

RECORD OF SURVEY

Filed for Record at the request of County Surveyor this 17th day of Sept 1959 at 10:55 A.M. in Book 30 Page 50 Fee \$5.00 No. 277777 Jack A. Ross County Recorder by O. G. Wheat Deputy

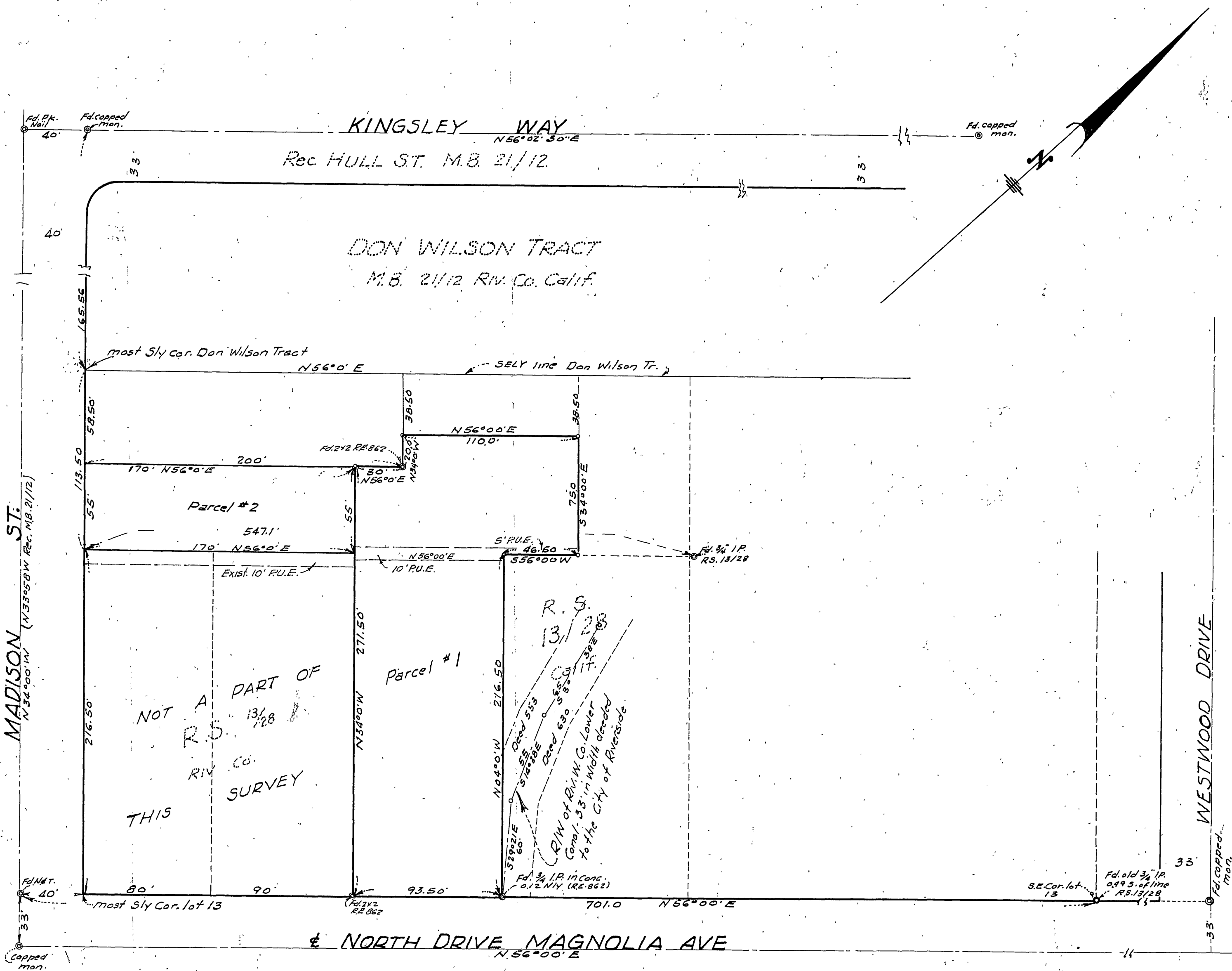
Being a Survey of a Portion of Lot 13 Blk. 17 of the R.L. & I. Co. as shown by Map on file in Book 1 Pg 70, Records of San Bernardino Co. Calif.

July 1959

Scale 1 in = 50 ft.

McKee & Crawley

Surveyors - Civil Engrs.



CITY CLERK'S CERTIFICATE This Record of Survey Map was approved by the City Council of the City of Riverside, California, on the 18th day of August 1959. Virginia J. Strofa, City Clerk of the City of Riverside, California

SURVEYOR'S CERTIFICATE This map correctly represents a survey made under my direction in conformance with the requirements of Chapter 15 Division 3, of the Business and Professions Code at the request of V. W. Jones July 1959. Donald A. Miller, Licensed Land Surveyor N21826

NOTES Bearings are based on the center line of Magnolia Ave. Shown as S 56° 00' W on R.S. 13-28 Riverside Co. Calif. Indicates 2x2 Redwood Stakes tagged L.S. 1825 Indicates monuments fd. as shown

COUNTY SURVEYOR'S CERTIFICATE This map has been examined for conformance with the requirements of Chapter 15 of Division 3 of the Business and Professions Code, this 16th day of September 1959. A.C. KEITH, County Surveyor By C. T. Worely Deputy