

30/59

IN THE CITY OF RIVERSIDE

# RECORD OF SURVEY

OF A PORTION OF LOT 257 OF THE R.L. & I.G. LANDS RECORDED IN MAP BOOK 8/53 RECORDS OF SAN BERNARDINO COUNTY, CALIFORNIA.

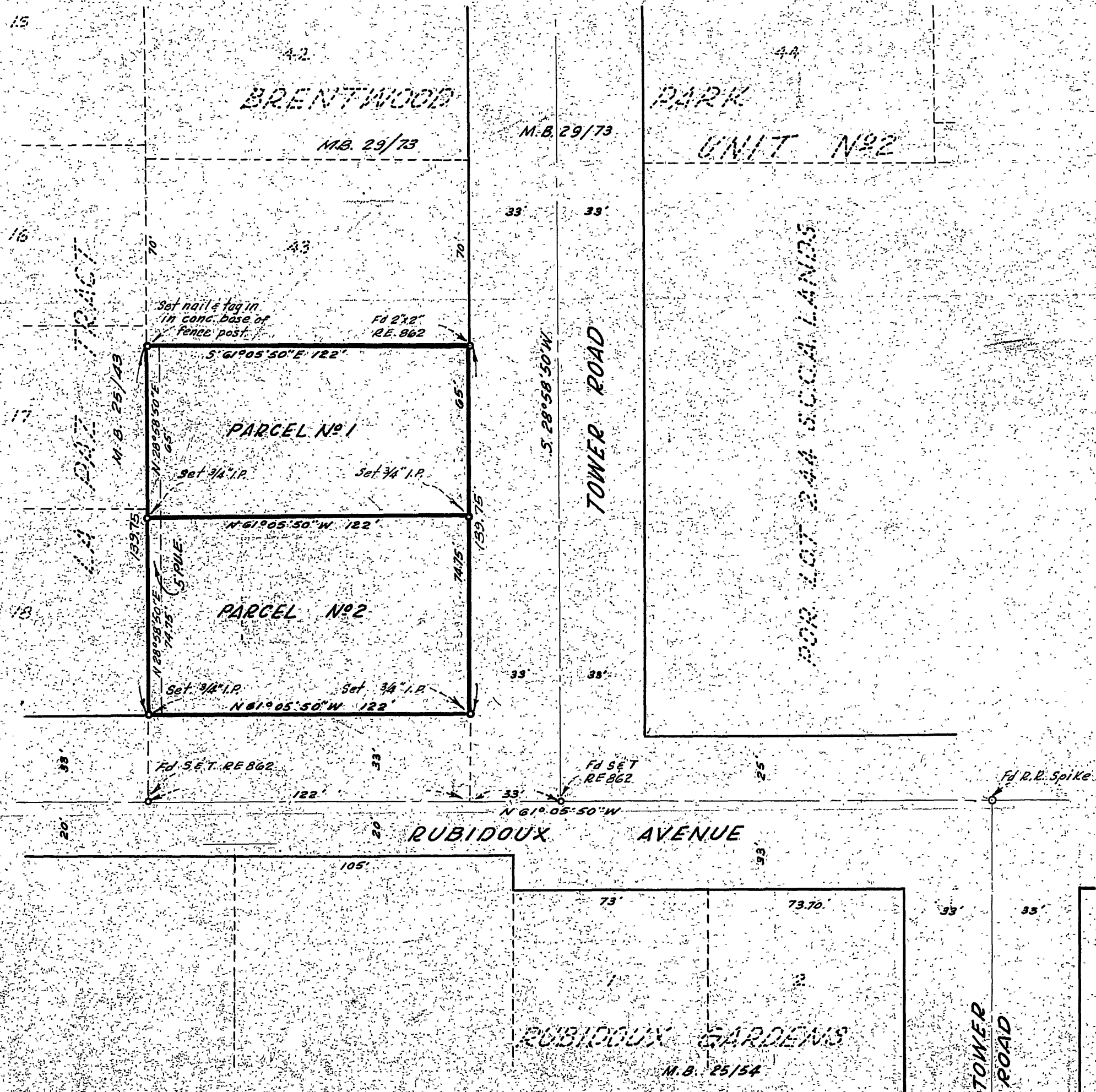
AUGUST 1959

J.F. DAVIDSON, C.E.

SCALE 1"=40'

MADE AT THE REQUEST OF WILLIAM RAPATTONI

Filed for Record at request of County Surveyor this 8th day of  
 October 1959 at 1:28 P.M. in Book 8/53  
 of Record of Survey of Page 59  
 Fee \$5.00 No. 86328  
 JACK A. RASS County Recorder  
 by O.A. Wheat Deputy  
 Filed at 10:35 A.M.



### ENGINEER'S CERTIFICATE

This map correctly represents a survey made by me or under my direction in conformance with the requirements of Chapter 15 of Division 3 of the Business and Professions Code at the request of William Rapattoni.

*J.F. Davidson*  
 Registered Civil Engineer No. 862

### ENGINEER'S NOTE

Bearings are based on the center line of Tower Road as being 3.26' 58" 30" W., as shown on map of BRENTWOOD PARK UNIT N#2 recorded in M.B. 29/73 records of Riverside County, California.

### CITY COUNCIL'S CERTIFICATE

This Record of survey was approved by the City Council of the City of Riverside, California on this 21 day of Sept. 1959.

*James D. Blackshear*  
 City Clerk of the City of Riverside, Calif.

### COUNTY SURVEYOR'S CERTIFICATE

This map has been examined for conformance with the requirements of Chapter 15 of Division 3 of the Business and Professions Code this 8th day of September 1959.

A.C. KEITH County Surveyor  
 by *G.T. Worsley* Deputy

FB. 671-49

S-382 RS 30/59

S-382 RS 30/59