

30/68

IN THE CITY OF RIVERSIDE

RECORD OF SURVEY

OF A PORTION OF LOT 16 BLOCK 35 OF LANDS OF RIVERSIDE LAND AND IRRIGATING COMPANY, MAP BOOK I PAGE 70 RECORDS OF SAN BERNARDINO COUNTY, CALIFORNIA

JULY 1959

ROSENTHAL ENGINEERING CO.

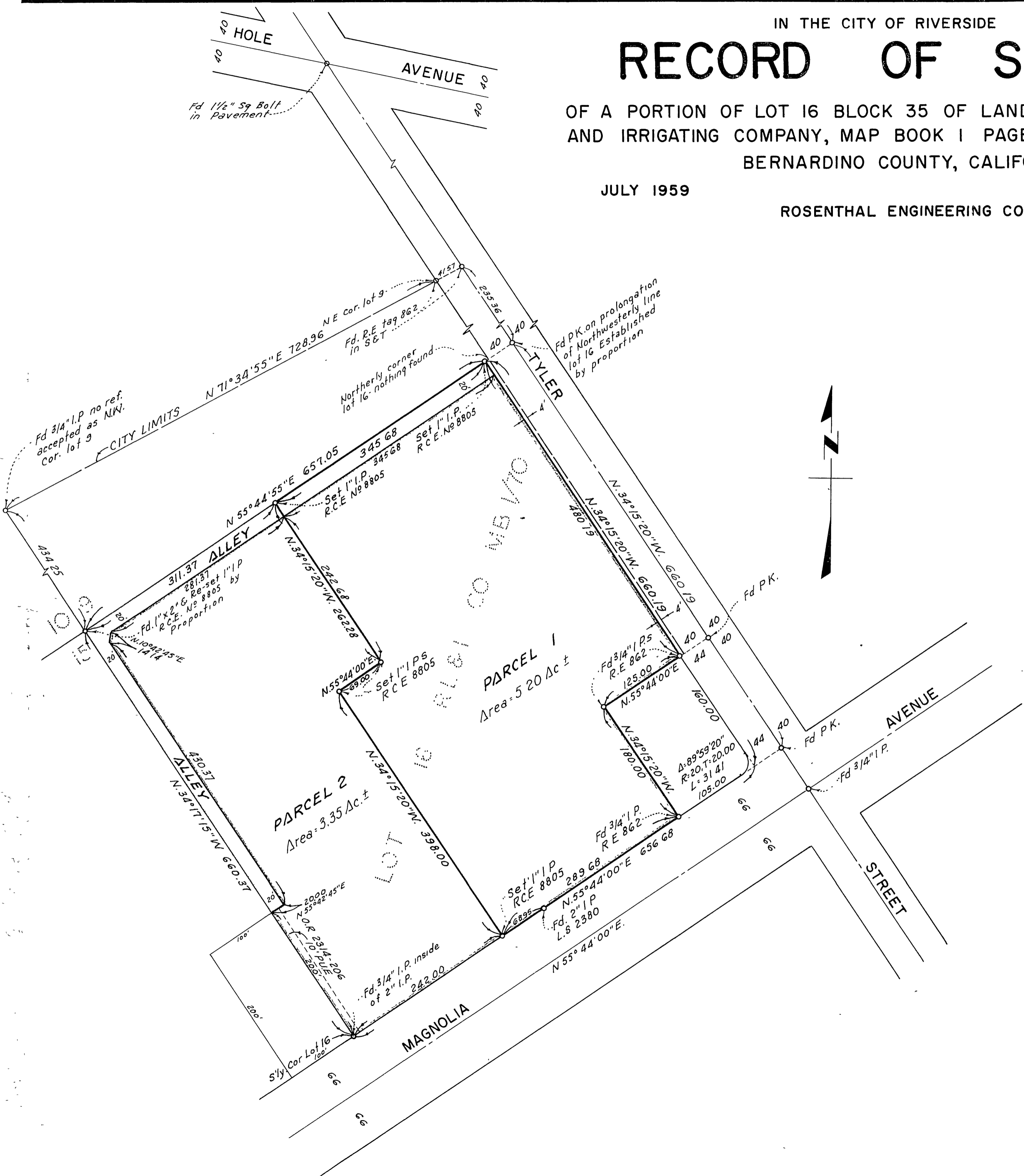
SCALE: 1" = 100'

Filed for Record at request of County Surveyor this 10th day of NOV, 1959 at 11:35 P.M. in Book 30 of Record of Survey at Page 63

Fee \$5.00 No. _____

JACK A ROSS County Recorder

By O.A. Heat Deputy



MADE AT THE REQUEST OF:
MAGNOLIA SQUARE,
A LIMITED PARTNERSHIP

This Record of Survey map was approved by the City Council of the City of Riverside, California on the 25th day of August, 1959.

Virginia J. Strobes
City Clerk of the City of Riverside, California
By _____ Deputy

ENGINEER'S CERTIFICATE

This map correctly represents a survey made under my direction in conformance with the requirements of Chapter 15 of Division 3 of the Business and Professions Code at the request of MAGNOLIA SQUARE, a limited partnership, in July, 1959.

Arthur G. Rosenthal
Registered Civil Engineer No 8805

ENGINEER'S NOTE

Bearings are based on the Nly Right of Way line of Magnolia Avenue being N. 55° 44' E. as shown on a map of La Sierra Entrance Tract, R.S. 5 Page 40, Records of Riverside County, California.

COUNTY SURVEYOR'S CERTIFICATE

This map has been examined for conformance with the requirements of Chapter 15 of Division 3 of the Business and Professions Code this 4th day of November, 1959

A.C. KEITH, County Surveyor

By G. T. Worsley Deputy