

30/78

IN THE CITY OF RIVERSIDE

RECORD OF SURVEY

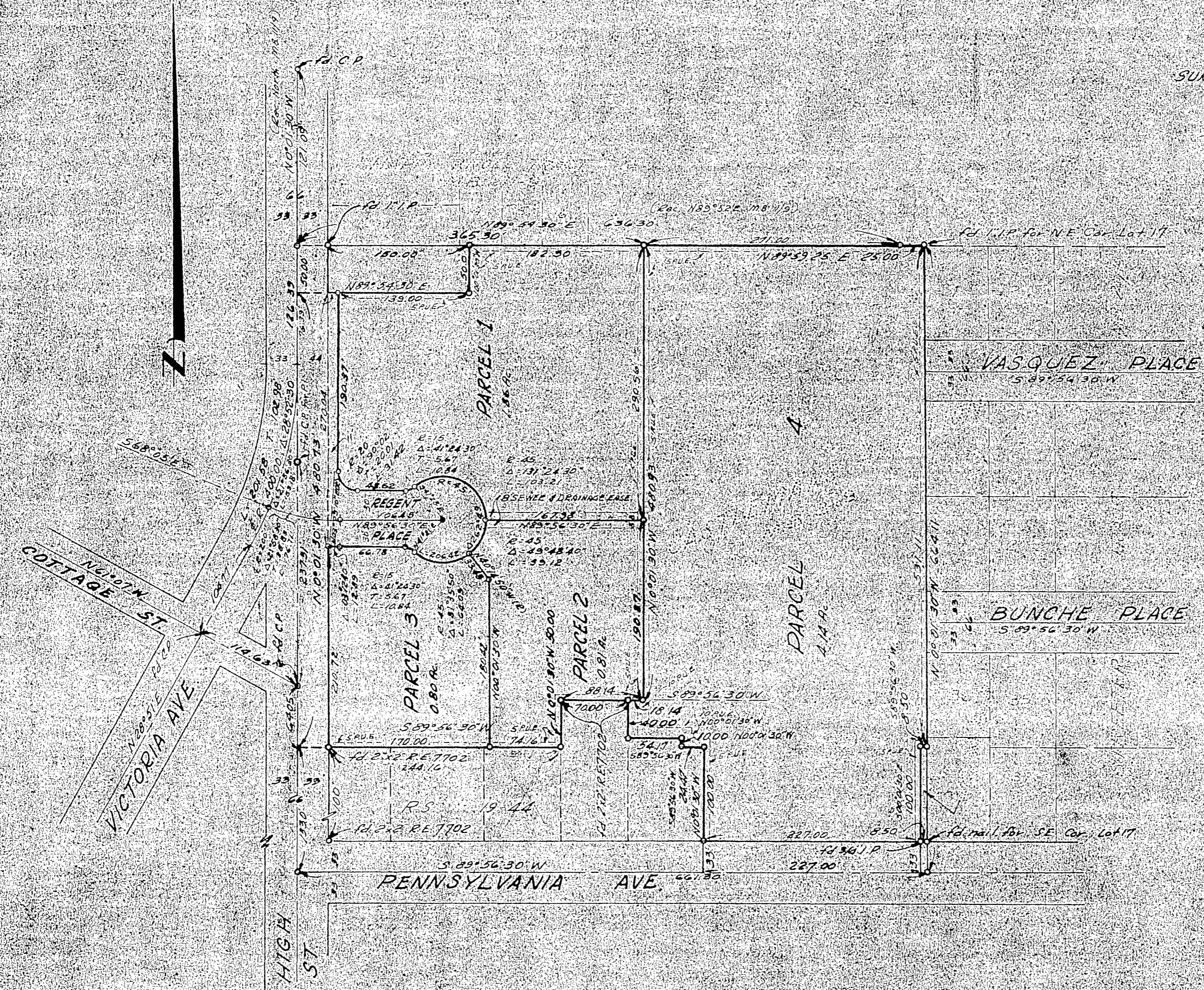
OF A PORTION OF LOT 17 OF CASTLEMANS ADDITION AS SHOWN
ON A MAP RECORDED IN MAP BOOK 3 PAGE 19 RECORDS OF
SAN BERNARDINO COUNTY, CALIFORNIA
JUNE 1959

SCALE 1"=100'

J.F. DAVIDSON, C.E.

Filed for Record at request of County Surveyor this 30th day of
October 1959 at Riverside, California
at Record of Survey of Page 16 of Map Book 3
No. 500 No. 10150
JACK A. ROSS - County Recorder
By: O.A. [Signature] Deputy

SURVEY MADE AT THE REQUEST OF: HAROLD V. GRENOBLE & H. CHRISTIANSEN



ENGINEER'S CERTIFICATE

This map correctly represents a survey made by me as a duly licensed and qualified civil engineer in accordance with the requirements of Chapter 15 of Division 3 of the Business and Professions Code this 25th day of October, 1959.

J.F. Davidson
Registered Civil Engineer No. 862

ENGINEER'S NOTE

Bearings are based on the center line of HIGH ST. being N 00° 01' 30" W, as shown on map of STREETER TRACT, MD 2412, Records of Riverside County, California.

Set 1/2" P. at all points, shown thus: unless marked otherwise.

COUNTY SURVEYOR'S CERTIFICATE

This map has been examined for conformance with the requirements of Chapter 15 of Division 3 of the Business and Professions Code this 25th day of November, 1959.

A.C. KETH, County Surveyor
By: T. Wood Deputy

RS 30/78 5-306

RS 30/78 5-306