

20/81
RS 30/81 5-388

IN THE CITY OF RIVERSIDE

RECORD OF SURVEY

OF LOT 182 OF VICTORIA GROVES UNIT NO. 6, M. B. 37, PG. 86-87
REC. RIV. CO., CALIF., LOT 178 OF VICTORIA GROVES UNIT NO. 8, M. B. 35, PG. 3-4,
REC. RIV. CO., CALIF., AND A PORTION OF LOTS 16 AND 17 OF VICTORIA RANCH
M. B. 4, PG. 59, REC. RIV. CO., CALIF.

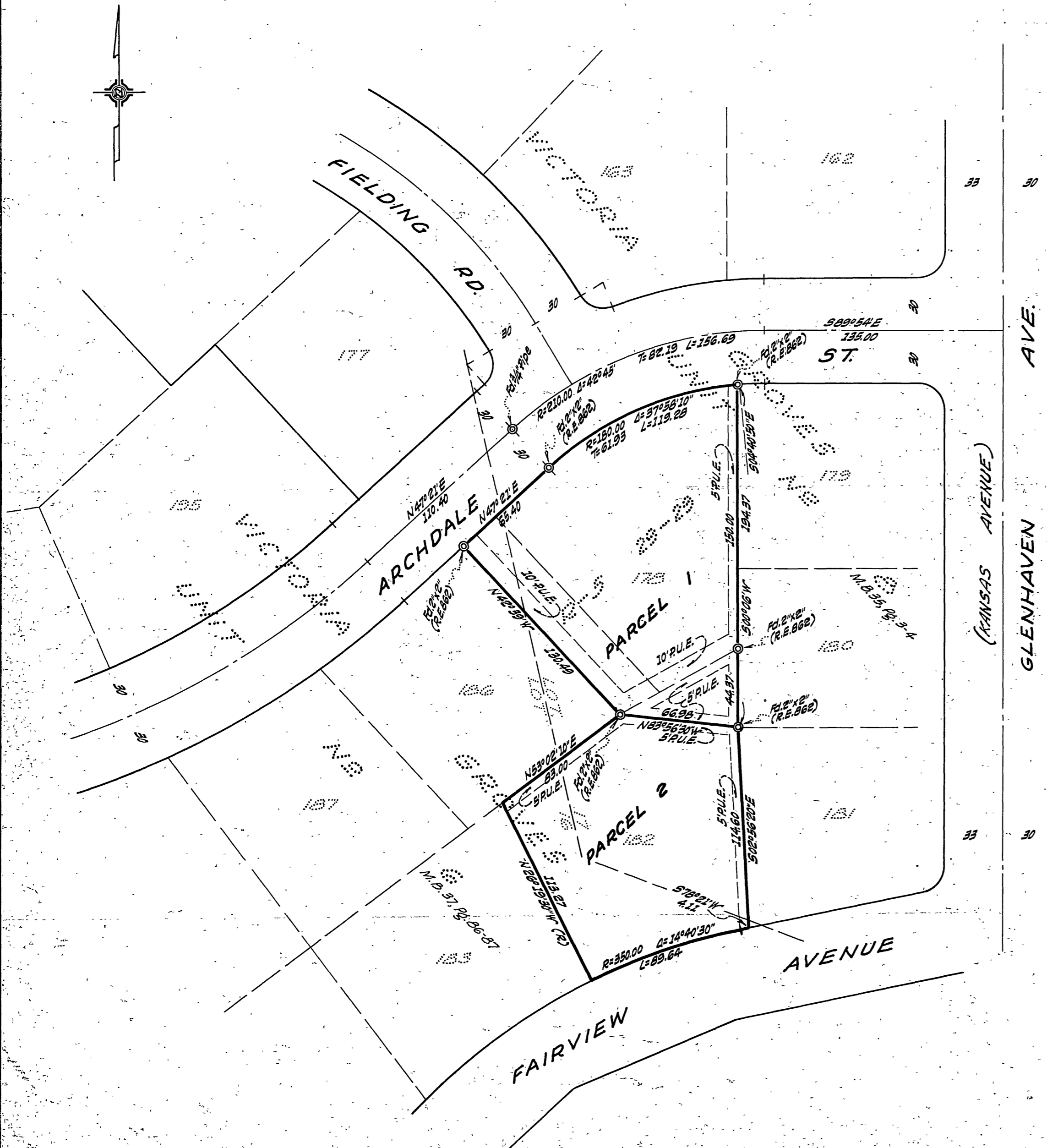
AUG. 1959

J. F. DAVIDSON, C. E.

SCALE 1" = 50'

Filed for Record at request of County Surveyor this 4th day of
December, 1959 at 9:30 A.M. in Book 31
of Record of Survey of Page 31
Fee \$ 5.00 No. 102857
JACK A. ROSS County Recorder
By O. A. Wheat Deputy

MADE AT REQUEST OF JOHNSON, INC.



ENGINEER'S CERTIFICATE

This map correctly represents a survey made by me or under my direction in conformance with the requirements of Chapter 15 of Division 3 of the Business and Professions Code at the request of JOHNSON, INC. in August, 1959.

George E. McCarty
Registered Civil Engineer No. 106288

ENGINEER'S NOTE

Bearings are based on the E of ARCHDALE STREET being N47°21'E as shown on map of VICTORIA GROVES UNIT NO. 6, M. B. 37/86-87, Records of Riverside County, California.

COUNTY SURVEYOR'S CERTIFICATE

This map has been examined for conformance with the requirements of Chapter 15 of Division 3 of the Business and Professions Code this 27th day of December, 1959.

A. C. KEITH County Surveyor

By G. T. Worsley Deputy

5-388
RS 30/81