

IN THE CITY OF RIVERSIDE RECORD OF SURVEY

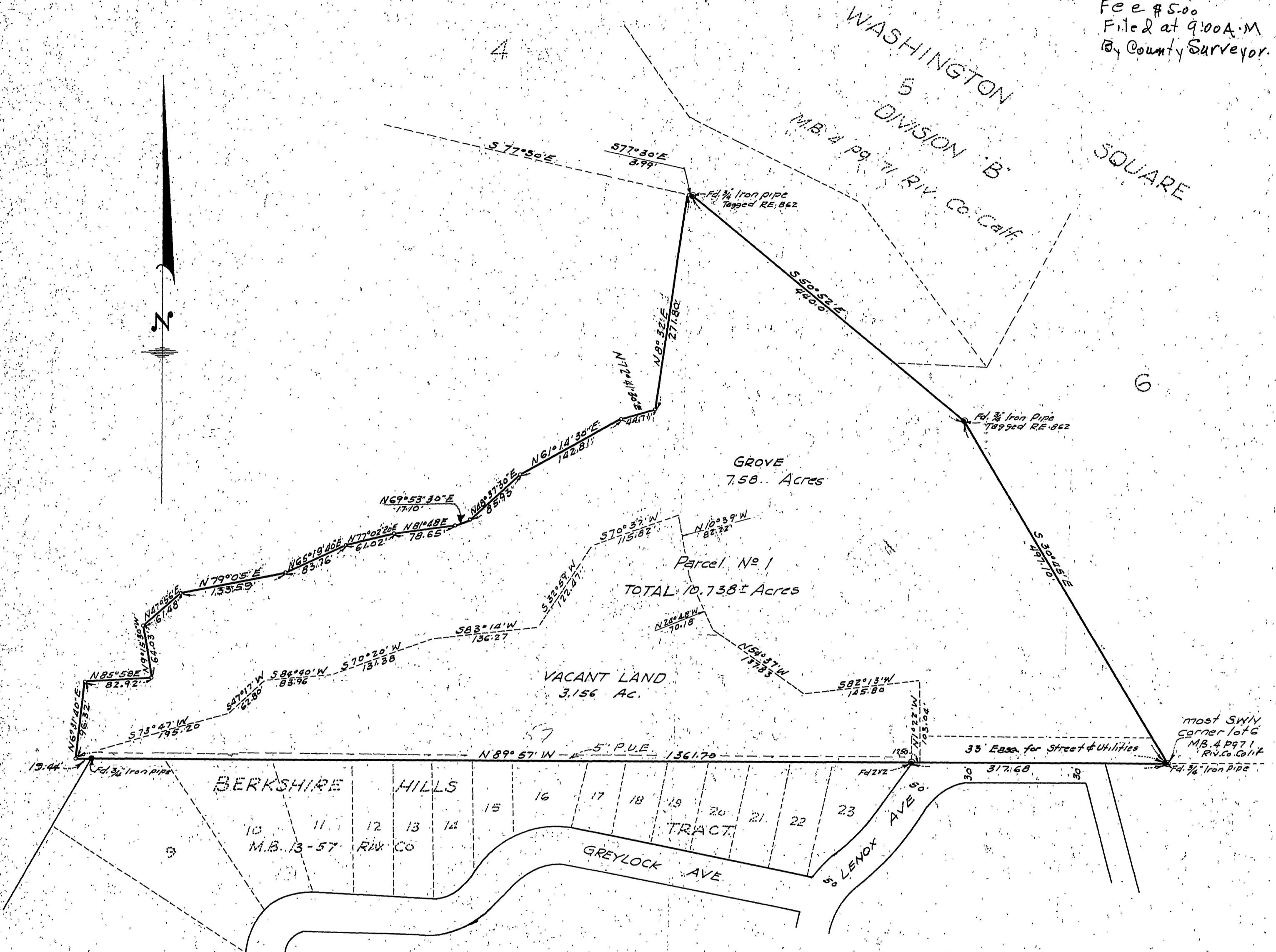
Being a Survey of a Portion of Blk. 87 of Sayward and Evans Tr. as Recorded
in Map Book 3 Pg 2, Records of San Bernardino County, Calif.

May 1959
Donald J. McKee
Licensed Surveyor

Scale 1 in = 100 ft.
Licensed Surveyor

FILED

DEC 4 1959
Jack A. Ross
By O.A. Jester
Fee \$5.00
Filed at 9:00 A.M.
By County Surveyor.



SURVEYOR'S CERTIFICATE

This map correctly represents a survey made under my direction in conformance with the requirements of Chapter 15 Division 3 of the Business and Professions Code at the request of A.V. Jester.

Donald J. McKee
Licensed Land Surveyor No. 1825

NOTES

- Bearings are based on the North line of Berkshire Hills Tract shown as S 89° 57' W on M.B. 13 Pg 57 Records of Riverside County Calif.
- o Indicates 1/4" Iron pipe Set and Tagged L.S. 1825
- Indicates monuments found as shown

COUNTY SURVEYOR'S CERTIFICATE

This map has been examined for conformance with the requirements of Chapter 15 of Division 3 of the Business and Professions Code, this 2nd day of December, 1959.

A.C. KEITH, County Surveyor
By *G. T. Worsley*
Deputy