

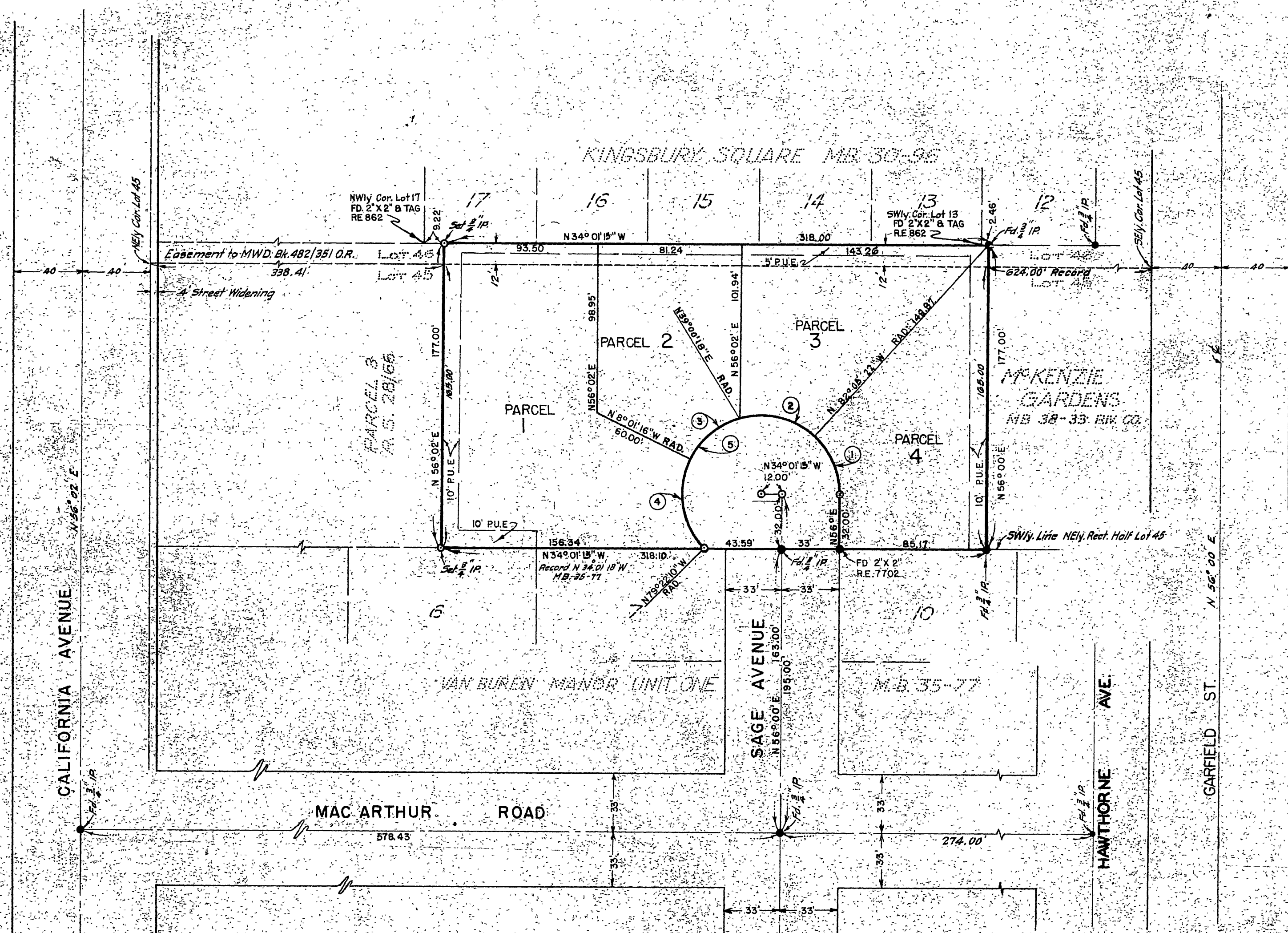
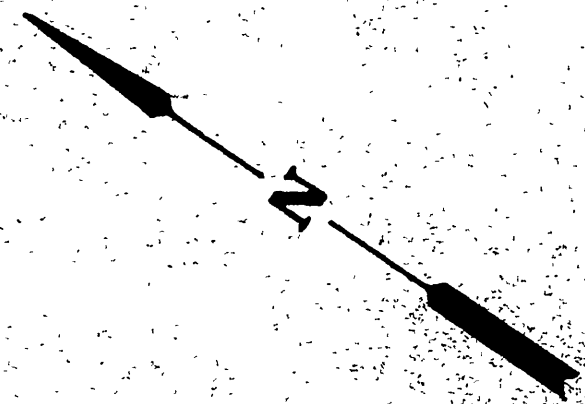
30/98

# IN THE CITY OF RIVERSIDE RECORD OF SURVEY

OF A PORTION OF LOTS 45 & 46, BLK. 12 VILLAGE  
OF ARLINGTON M.B.I, PG. 62, RECORDS S.B. CO.  
JULY 1959 RIVERSIDE ENGINEERING COMPANY INC. RIVERSIDE, CALIF. SCALE 1"=50'

Filed for Record at the Request of County Surveyor  
This 19th day of January 1960 at 2:10 P.M.  
In Book 30 of Record of Survey at page 98  
Fee \$ 5.00  
No. 4391

Jack A. Ross  
COUNTY RECORDER  
By O.A. Wood  
Deputy

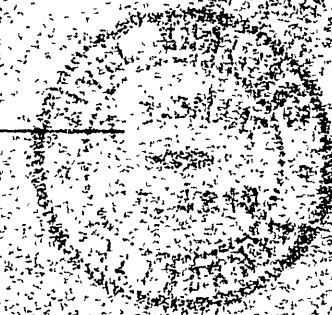


See R/S 31/96 for correction.

### ENGINEER'S CERTIFICATE

THIS MAP CORRECTLY REPRESENTS A SURVEY MADE BY ME OR UNDER MY DIRECTION IN CONFORMANCE WITH THE REQUIREMENTS OF CHAPTER 15 OF DIVISION 3 OF THE BUSINESS AND PROFESSIONS CODE AT THE REQUEST OF MERWIN B. FLEMING

IN July 1959  
F. B. Smart  
R.C.E. No 4210



### COUNTY SURVEYOR'S CERTIFICATE

THIS MAP HAS BEEN EXAMINED FOR CONFORMANCE WITH THE REQUIREMENTS OF CHAPTER 15 OF DIVISION 3 OF THE BUSINESS AND PROFESSIONS CODE THIS 19th DAY OF January 1960

A. C. Keith  
COUNTY SURVEYOR  
BY A. T. Woodley  
DEPUTY

CURVE DATA				
NO.	R.	Δ	L	T
1	45'	48° 05' 22"	37.76'	20.05'
2	45'	58° 52' 20"	46.78'	25.43'
3	45'	47° 01' 34"	36.93'	19.58'
4	45'	71° 20' 54"	56.04'	32.30'
5	45'	225° 22' 10"	177.00'	

### ENGINEERS' NOTES:

- THE BASIS OF BEARINGS SHOWN ON THIS MAP IS THE CENTER LINE OF SAGE AVENUE SHOWN ON A MAP OF VAN BUREN MANOR UNIT 1 M.B. 35 PG. 77 AS N56°00'E
- MONUMENTS FOUND AS NOTED
- 0 3/4" I.P. TAGGED - R.E. 4210 SET
- 2x2 REDWOOD STAKES SET AT LOT CORNERS UNLESS OTHERWISE SHOWN

RS 30/98 S-392

RS 30/98 S-392

RS 30/98