

31/8

IN THE CITY OF RIVERSIDE RECORD OF SURVEY

OF A PORTION OF LOT 9 BLOCK 8 R.L. & I. CO. LANDS M.B. 1/70
RECORDS OF SAN BERNARDINO COUNTY, CALIFORNIA.

JANUARY 1960

J.F. DAVIDSON C.E.

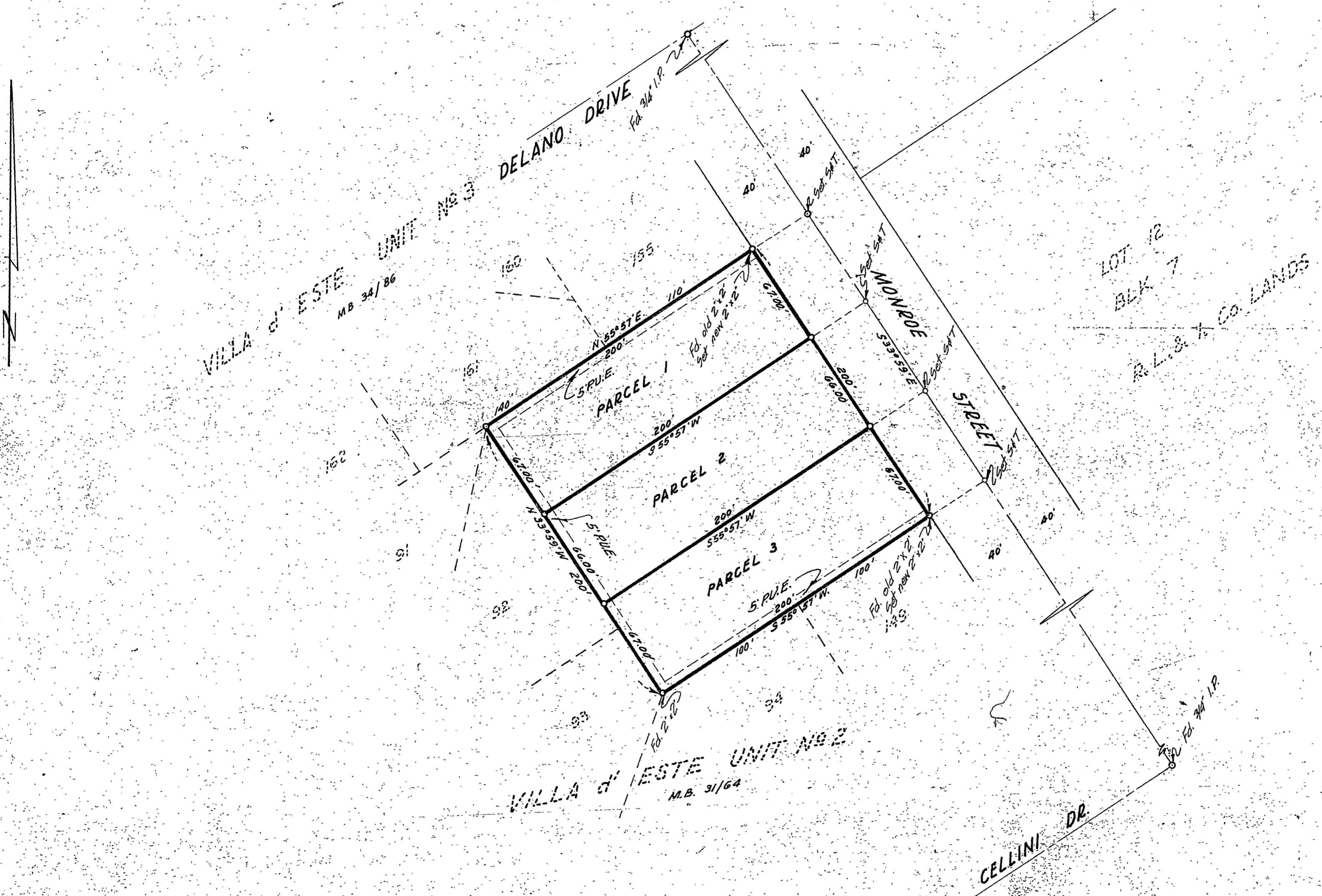
SCALE 1" = 50'

Filed for Record at request of County Surveyor this 2nd day of
FEBRUARY 1960 at 2:31 P.M. in Book 01
of Record of Survey of Page 3
Fee \$ 5.00 No. 9112

JACK A. ROSS County Recorder

By O.A. West Deputy

SURVEY MADE AT THE REQUEST OF -
HAROLD W. HEERS, JR.



ENGINEER'S CERTIFICATE

This map correctly represents a survey made by me or under my direction in conformance with the requirements of Chapter 15 of Division 3 of the Business and Professions Code at the request of Harold W. Heers, Jr. in December 1959.

J. Davidson
Registered Civil Engineer No. 862

ENGINEER'S NOTE

Bearings are based on the bearing of MONROE ST as being 53° 57' E as shown on map of Villa d'Este Unit No. 2, M.B. 31/64 Records of Riverside County, California.

Set 2x2" redwood stakes painted white and tagged P.E. 862 at all points shown thus: — unless otherwise noted.

COUNTY SURVEYOR'S CERTIFICATE

This map has been examined for conformance with the requirements of Chapter 15 of Division 3 of the Business and Professions Code this 21st day of FEBRUARY 1960.

A.C. KEITH County Surveyor

By E. J. Woodley Deputy

5395

235/557

RS 31/8
5395