

31/10
S-397
RS 31/10

IN THE CITY OF RIVERSIDE

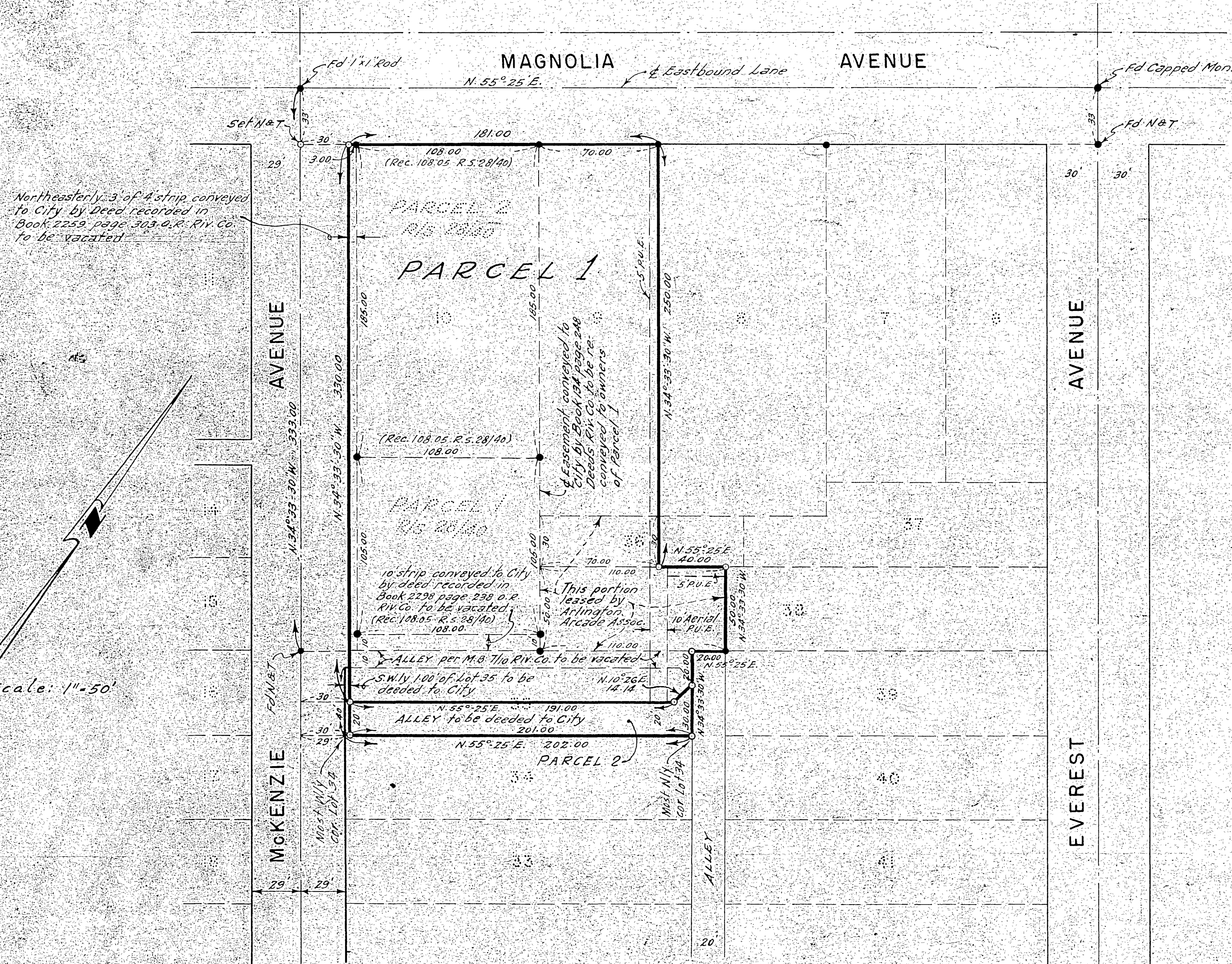
RECORD OF SURVEY

OF LOTS 9, 10, AND 35 AND PORTIONS OF LOTS 36, AND 38 OF MERICKEL
SUBDIVISION AS SHOWN ON MAP RECORDED IN M.B. 7 PAGE 10 RECORDS
OF RIVERSIDE COUNTY, CALIFORNIA

Filed for record at request of County Surveyor
this 2nd day of February 1960 at 2:35 P.M. in
Book 21 of Record of Survey at page 10

Fee \$ 5.00 No. 9114

JACK A. ROSS County Recorder
By O.A. Prout
Deputy



This map correctly represents a survey made by me or under my direction in conformance with the requirements of Chapter 15 of Division 3 of the Business and Professions Code at the request of Arlington Arcade Associates.

Ernest N. Webb
R.C.E. 9876

ENGINEER'S NOTES:-

Basis of Bearings is the centerline of the Eastbound lane of Magnolia Avenue, taken as N. 55° 25' E., as same is shown on map filed in Book 20 of Records of Survey at page 40 thereof, records of Riverside County, California

Found 3/4" Iron Pipe at all points shown thus • unless otherwise noted

Set 3/4" Iron Pipe tagged R.E. 9876 at all points shown thus o unless otherwise noted.

This map has been examined for conformance with the requirements of Chapter 15 of Division 3 of the Business and Profession Code this 2nd day of February 1959.

A.C. Keith
County Surveyor

By C. T. Worsley Deputy

ALBERT A. WEBB ASSOCIATES
CIVIL ENGINEERS
SEPTEMBER 1959

S-397
RS 31/10