

# IN THE CITY OF RIVERSIDE RECORD OF SURVEY

OF A PORTION OF BLOCK 8 OF ROCKLEDGE AS SHOWN ON A MAP  
FILED IN BOOK 4, PAGE 56 OF MAPS, RECORDS OF RIVERSIDE COUNTY  
OCTOBER, 1959

SCALE: 1" = 50'

MSKEE & CRAWLEY  
Surveyors and Engineers

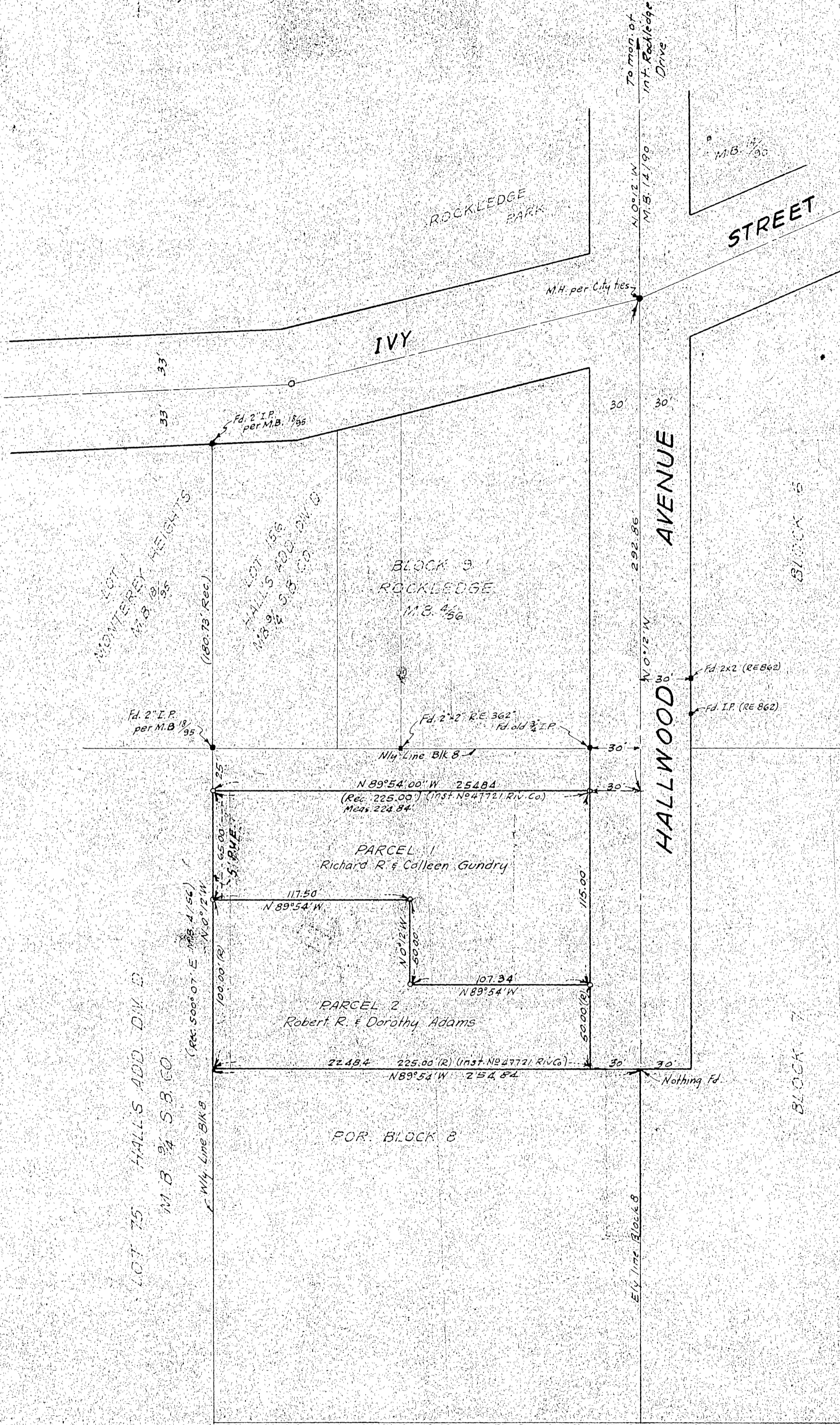
Filed for record at request of County Surveyor this 2nd day of February  
1960 at 3:35 P.M. in Book 31 of Record of Survey of Page 111

Fee \$5.00

Jack A. Ross  
County Recorder

No. 9115

By O.A. Sweet  
Deputy



**NOTES:**

The basis of bearings shown on this map is the center line of Hallwood Ave. (N0°12'W) as shown on a map of Rockledge Park on file in Book 4, page 56 of Maps, records of Riverside County, California. Set 2" iron pipes at points shown thus: o

This map correctly represents a survey made by me or under my direction in conformance with the requirements of Chapter 15 of Division 3 of the business and professions code at the request of Richard R. Gundry in November, 1959.

George O. Crawley  
(Signed and Sealed)

R.E. No. 9455

This map has been examined for conformance with the requirements of Chapter 15 of Division 3 of the Business and Professions Code this 2nd day of February, 1960.

A.C. KEITH  
County Surveyor

By G.T. Worsley  
Deputy