

IN THE CITY OF RIVERSIDE

# RECORD OF SURVEY

OF A PORTION OF THE S. 1/2 OF THE N.E. 1/4 OF SEC. 35, T25, R5W, S.B.D.#M  
ALSO A PORTION OF LOT 'E' VICTORIA HEIGHTS M.B. 4/92, RECORDS OF RIVERSIDE  
COUNTY, CALIFORNIA.

JANUARY, 1960

J.F. DAVIDSON C. E.

Filed for Record at request of County Surveyor this 27th day of February, 1960 at 12:45 P.M. in Book 31

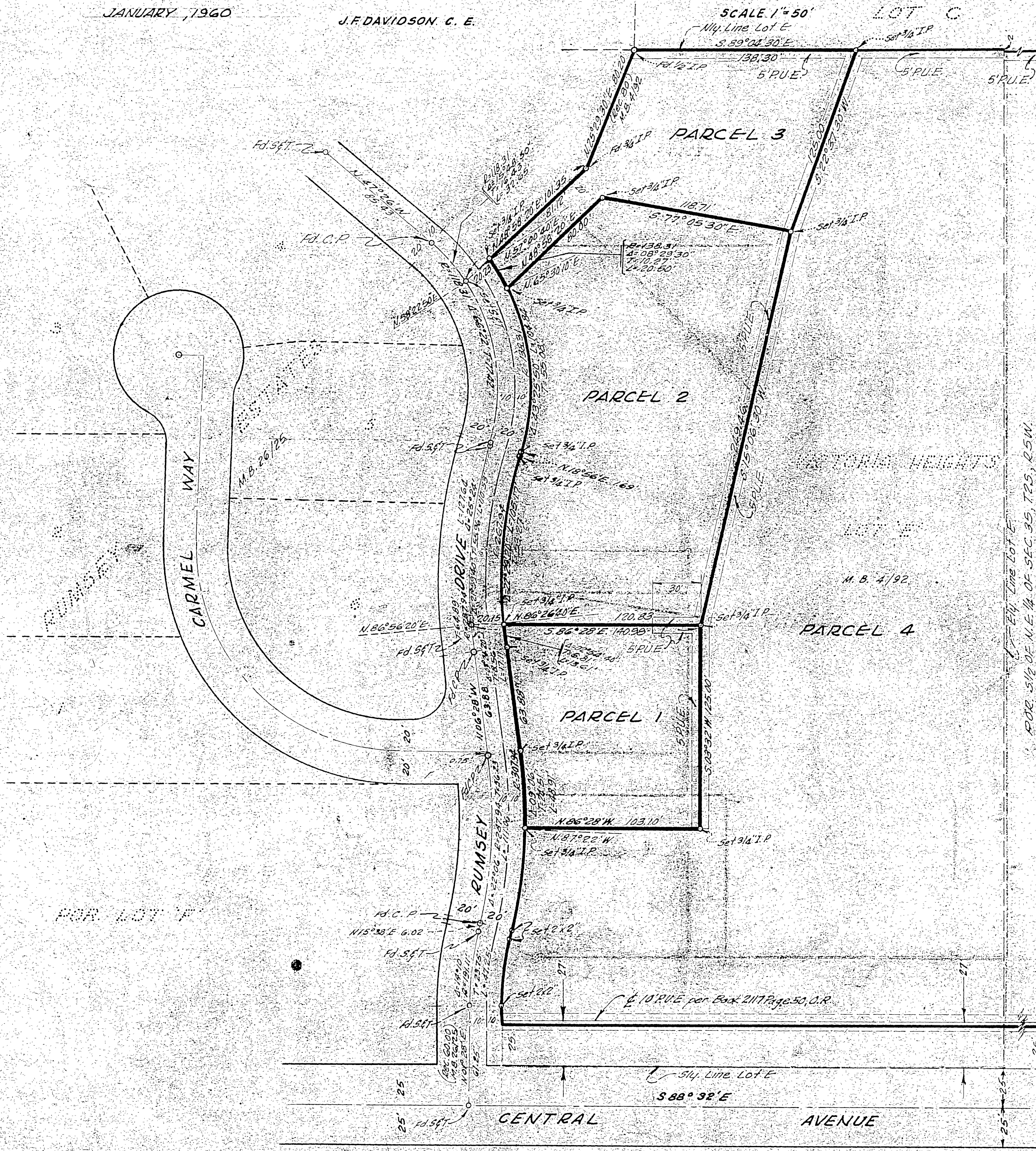
of Record of Survey of Page 172

Map No. S-01 No. 9516

JACK A. ROSS County Recorder

By O. A. Wheat Deputy

MADE AT THE REQUEST OF:  
DONALD JONES



### ENGINEER'S CERTIFICATE

This map correctly represents a survey made by me or under my direction in conformance with the requirements of Chapter 15 of Division 3 of the Business and Professions Code at the request of Donald Jones in December, 1959.

J. F. Davidson  
Registered Civil Engineer No. 862

### ENGINEER'S NOTE

Bearings are based on the center line of Rumsey Drive, at its intersection with Carmel Way, as being N. 06° 28' W' as shown on map of Rumsey Estates, M.B. 26/25, Rec. Riv. Co. Calif.

### COUNTY SURVEYOR'S CERTIFICATE

This map has been examined for conformance with the requirements of Chapter 15 of Division 3 of the Business and Professions Code this 27th day of February, 1960.

A. C. KEITH, County Surveyor  
By E. T. Wardley Deputy

S-399

S-399

R/S 3/1/2