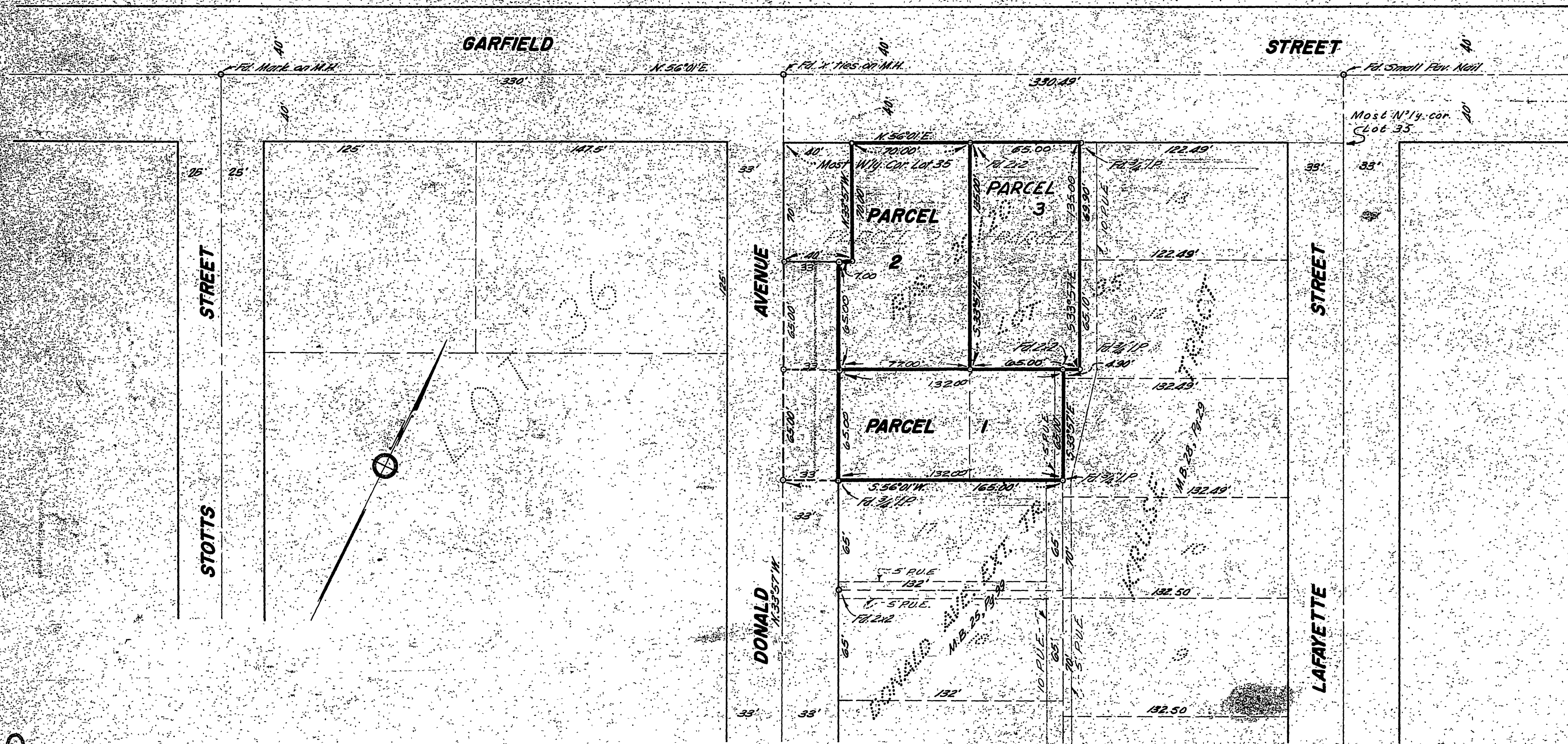


31/16

S-401
R/S31/16

IN THE CITY OF RIVERSIDE
RECORD OF SURVEY
 OF A PORTION OF LOT 35, BLOCK 12, OF THE VILLAGE OF ARLINGTON AS RECORDED IN MAP BOOK 1, PAGE 62 RECORDS OF SAN BERNARDINO COUNTY, CALIF.
 DECEMBER, 1959
 J.F. DAVIDSON, C.E. SCALE 1" = 50'

Filed for Record at request of County Surveyor this 13th day of February, 1960, at 11:45 AM in Book 1 of Record of Survey of Page 16101
 J.A.S.O. No. 16101
 JACK A. ROSS - County Recorder
 by O.A. Wheat Deputy



SURVEY MADE AT THE REQUEST OF R.G. ALLARD

ENGINEER'S CERTIFICATE

This map correctly represents a survey made by me or under my direction in conformance with the requirements of Chapter 15 of Division 3 of the Business and Professions Code at the request of R.G. Allard in January, 1960.
 J.F. Davidson
 Registered Civil Engineer No. 862

ENGINEER'S NOTE

Bearings are based on the center line of Garfield St. which bears N 56° 01' E, as shown on Record of Survey 20, Page 20, Records of Riverside County, California.
 3/4" Pipe at all points shown thus: —○— unless noted otherwise.

COUNTY SURVEYOR'S CERTIFICATE

This map has been examined for conformance with the requirements of Chapter 15 of Division 3 of the Business and Professions Code this 18th day of February, 1960.
 A.C. Keith, County Surveyor
 By: C.T. Worsley, Deputy
 FB 671/59

S-401
R/S31/16