

IN THE CITY OF RIVERSIDE

RECORD OF SURVEY

OF LOT 24 OF PRINCE ALBERT ESTATES UNIT No 2, M.B. 20197 RECORDS
OF RIVERSIDE COUNTY, CALIFORNIA

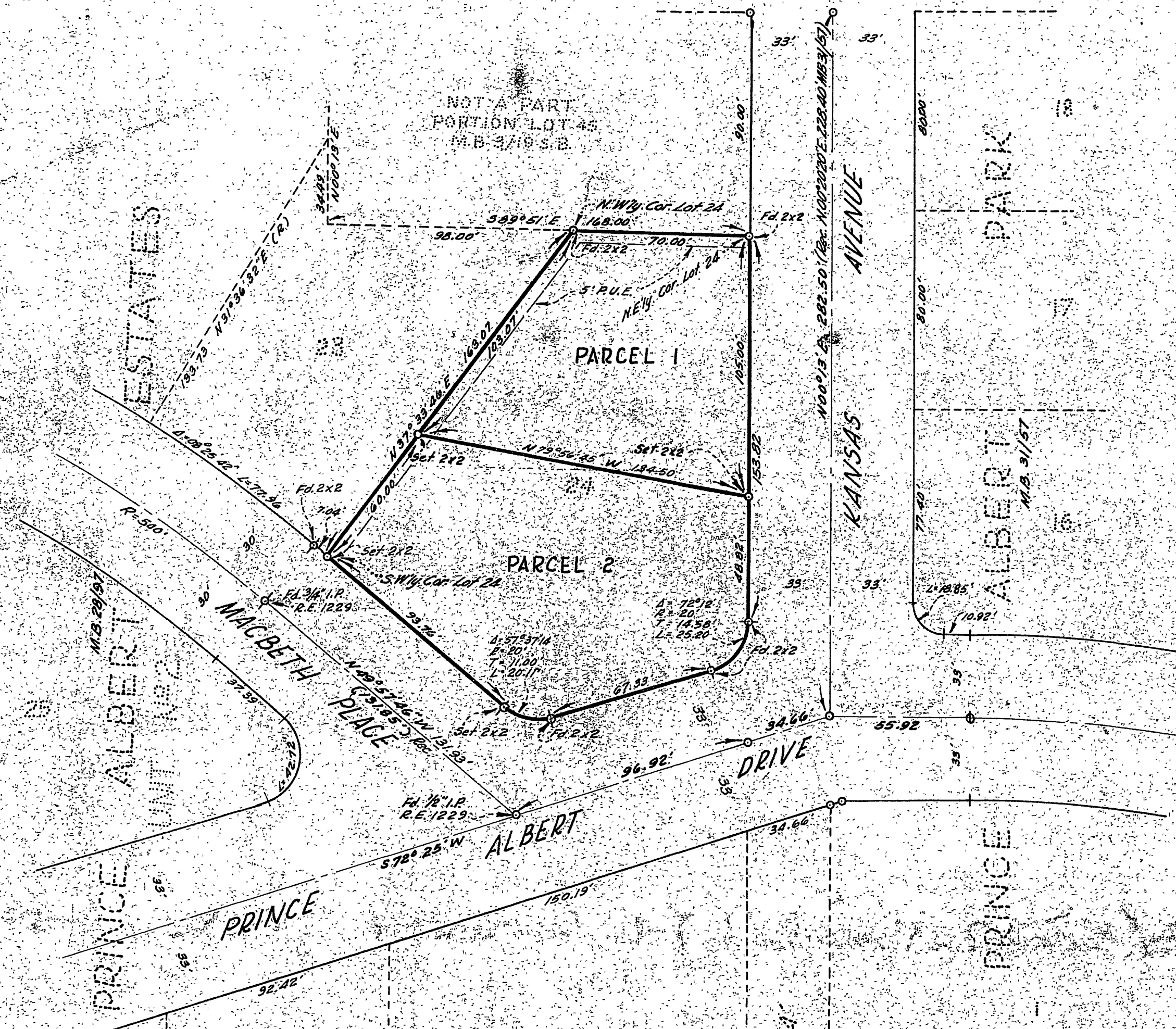
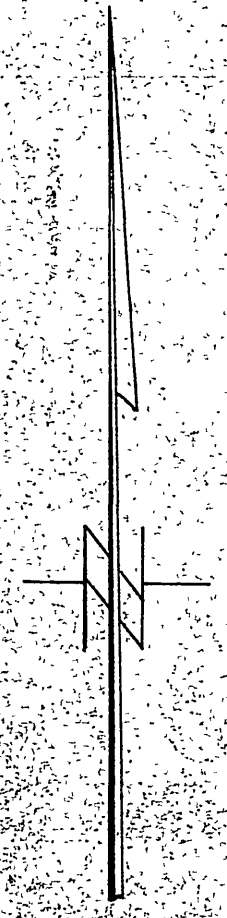
OCTOBER 1959

SCALE 1"=40'

J. F. DAVIDSON, C.E.

Filed for Record at Register of County Surveys on this 23rd day of
October 1959 at Riverside California in Book 51
of Records of Surveys of page 127
No. 4500 No. 16102
JACK A. RISS County Recorder
By O. A. P. Great Deputy

MADE AT THE REQUEST OF
BURTON C. WALKER



ENGINEER'S CERTIFICATE
This map correctly represents a survey made by me or under my direction in conformance with the requirements of Chapter 15 of Division 3 of the Business and Professions Code at the request of Burton C. Walker in OCTOBER 1959.
J. F. Davidson
Registered Civil Engineer No. 862

ENGINEER'S NOTE
Bearings are based on the E of KANSAS AVE. as being $N00^{\circ}19'56''$ as shown on map of PRINCE ALBERT ESTATES UNIT No 2 M.B. 20197 Records of Riverside County California.

COUNTY SURVEYOR'S CERTIFICATE
This map has been examined for conformance with the requirements of Chapter 15 of Division 3 of the Business and Professions Code this 15th day of FEBRUARY 1960.
A. C. KEITH County Surveyor
By [Signature] Deputy

S-402
R/S 31/17

S-402
R/S 31/17

31/17