

31/22

IN THE CITY OF RIVERSIDE

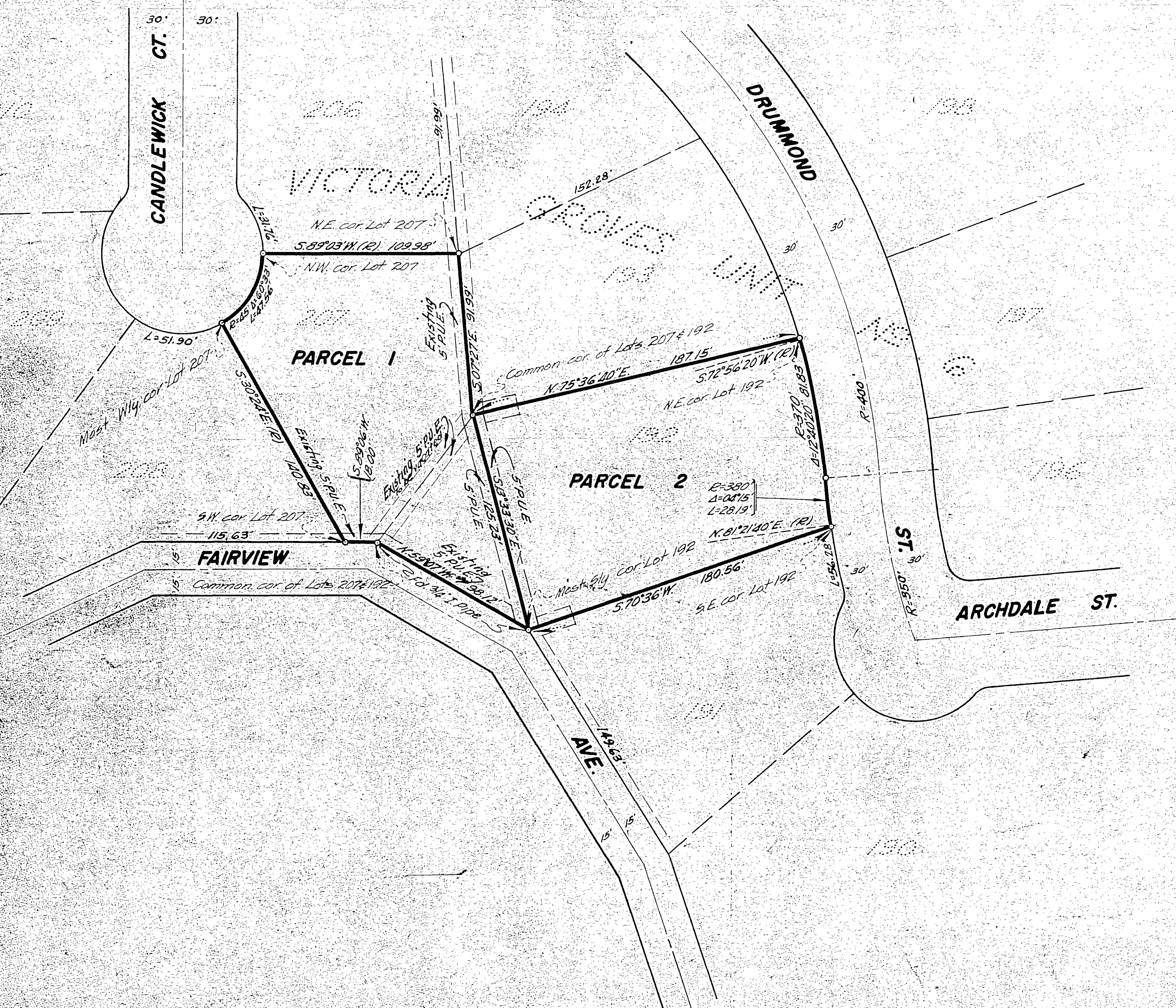
RECORD OF SURVEY

OF LOTS 192 AND 207 OF VICTORIA GROVES UNIT NO. 6 AS SHOWN IN MAP BOOK 37, PAGE 87, RECORDS OF RIVERSIDE COUNTY, CALIFORNIA.
DECEMBER, 1959

J.F. DAVIDSON, C.E.

SCALE 1" = 50'

Filed for Record at request of County Surveyor this 2nd day of
MARCH 1960 at 1:30 P.M. in Book 37
of Record of Survey of Page 77
Fee \$ 5.00 No. 18865
JACK A. ROSS County Recorder
By O.A. Mead Deputy



MADE AT THE REQUEST OF JOHNSON INC.

ENGINEER'S CERTIFICATE

This map correctly represents a survey made by me or under my direction in conformance with the requirements of Chapter 15 of Division 3 of the Business and Professions Code at the request of Johnson, Inc. in January 1960.

J.F. Davidson
Registered Civil Engineer No. 862

ENGINEER'S NOTE

Bearings are based on the north line of lot 207 which bears $N. 89^{\circ} 05' E.$ as shown on map of Victoria Groves Unit No. 6, on file in map book 37, page 87, records of Riverside County, California.
Fol. 2"x2" Redwood Stakes, tagged R.E. 862, at all points shown thus \ominus unless otherwise noted.

COUNTY SURVEYOR'S CERTIFICATE

This map has been examined for conformance with the requirements of Chapter 15 of Division 3 of the Business and Professions Code this 2nd day of MARCH 1960.

A.C. KEITH County Surveyor
By Conrad W. Wootley Deputy

R/S31/22 S-404

R/S31/22 S-404