

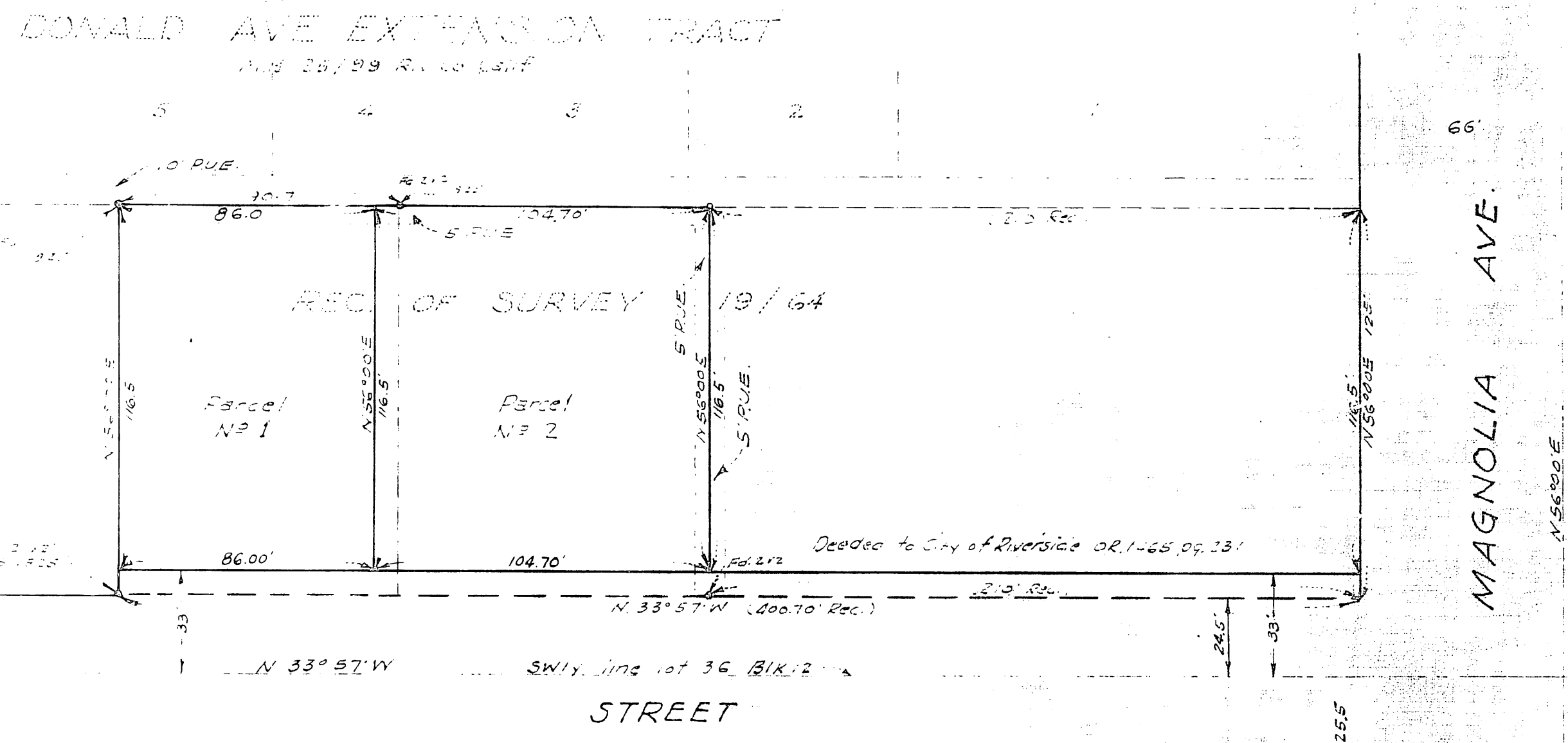
31/73

IN THE CITY OF RIVERSIDE RECORD OF SURVEY

Filed for record at request of County Surveyor this 4th day of March
1960 at 2:58 P.M. in Book 31 of Record of Survey at Page 23
Fee \$5.00
No. 20115
Jack A. Ross
County Recorder
By O. A. Wheat
Deputy

Of a portion of the rectangular Southwesterly 1/2 of Lot 36, Block 12, Village of
Arlington as shown by map on file in M.B. 1, page 62, Records of San Bernardino County, Calif.
December 1959 Scale: 1 in = 40 ft.
McKee and Crawley - Surveyors - Engineers

RS 31/23



RS 31/23

This map correctly represents a survey made by me or under my direction in conformance with the requirements of Chapter 15 of Division 3 of the Business and Professions Code at the request of Margaret E. Rood in December 1959.
Signed: Donald McKee
No. 451825

NOTE: Bearings are based on the center line of Magnolia Avenue as being N 56°00'E, as shown on R/S 12/197 and R/S 19/64 R.V. Co. Calif.
Monuments Feasible as noted
212 Redwood stakes tagged L.S. 1825 set at all corners unless otherwise noted

This map has been examined for conformance with the requirements of Chapter 15 of Division 3 of the Business and Professions Code this 3rd day of March 1960.
A.C. Keith
County Surveyor
By P. W. Worsley
Deputy

RS 31/23