

RECORD OF SURVEY

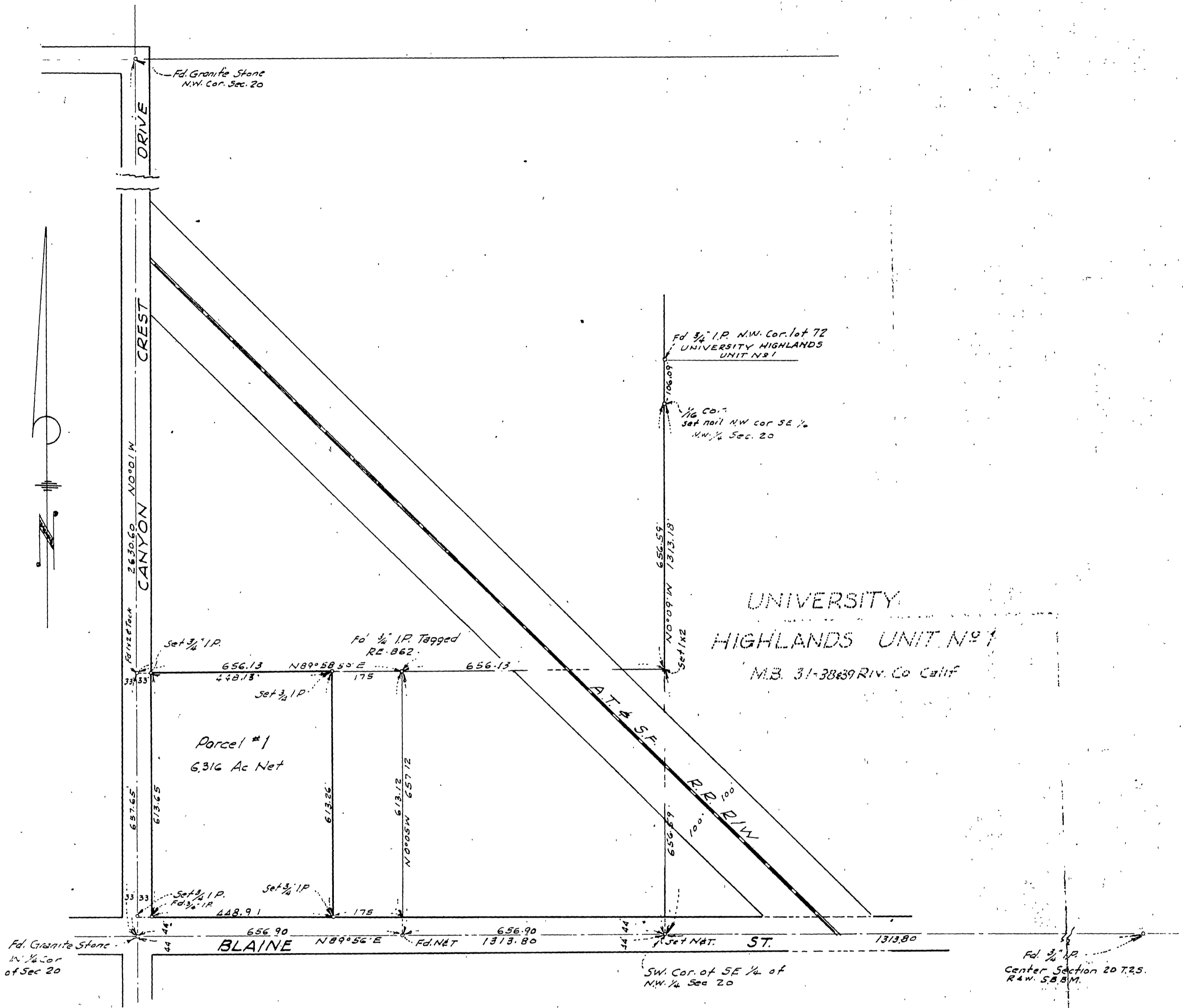
IN THE COUNTY OF RIVERSIDE.

of a Portion of the Southwest 1/4 of the Southwest 1/4 of the Northwest 1/4 of Section 20 T.2 S. R.4 W. S.B.B.# M.

February 1960 Scale 1in=200ft
 McKee & Crawley Surveyors & Engineers

Filed for record at request of County Surveyor this 8th day of March 1960 at 10:40 A.M. in Book 31 of Record of Survey at Page 27
 Fee \$5.00
 By Jack A. Ross County Recorder
 O. A. Wheat Deputy

RS 31/27



Note: Monuments found and set as indicated
 Bearings are based on the Westerly line of UNIVERSITY HIGHLANDS (M.B. 31-38,39) shown as N0°09'12"W

This map correctly represents a survey made by me or under my direction in conformance with the requirements of Chapter 15 of Division 3 of the Business and Professions Code at the request of Gethsemane Lutheran Church in Feb 1960
 David J. McKee (Signed and Sealed)
 No. 1825

This map has been examined for conformance with the requirements of Chapter 15 of Division 3 of the Business and Professions Code this 7th day of March 1960
 A. C. Keith County Surveyor
 By G. T. Worsley Deputy

R/S 31/27