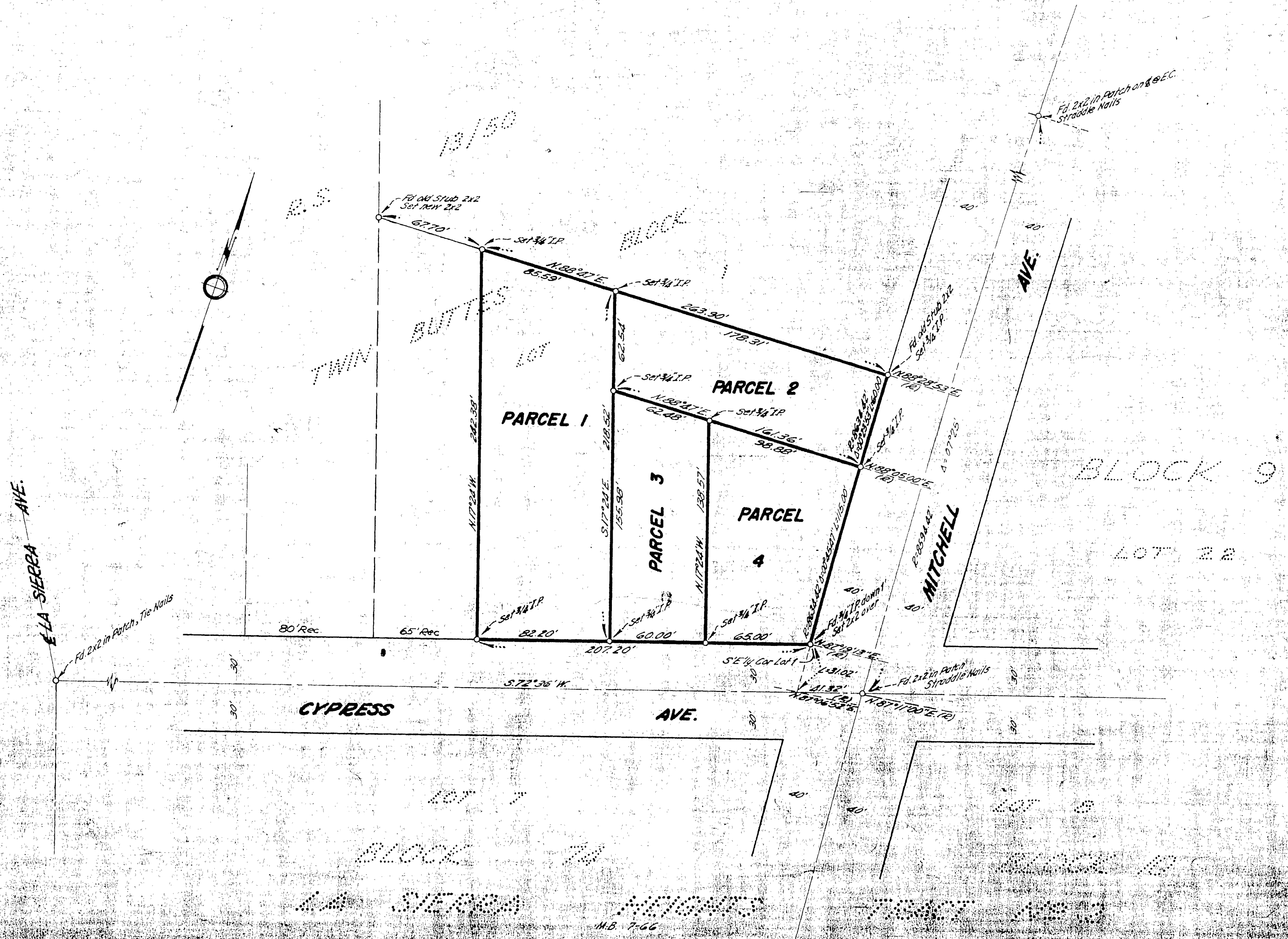


IN THE COUNTY OF RIVERSIDE
RECORD OF SURVEY
 OF A PORTION OF LOT 1 OF TWIN BUTTES BLOCK AS SHOWN IN M.B. 10, P. 39,
 RECORDS OF RIVERSIDE COUNTY, CALIFORNIA.
 FEBRUARY, 1960

J.F. DAVIDSON, C.E.

SCALE 1" = 50'

Filed for Record at Request of County Surveyor this 27th day of
 March 1960 at 10:44 AM in Book
 of Record of Survey of Page 21
 Fee \$ 5.00 No.
 JACK A. RUSS County Recorder
 by O.A. Seal Deputy



SURVEY MADE AT THE REQUEST OF COSTIS MANUDES

ENGINEER'S CERTIFICATE

This map correctly represents a survey made by me or under my direct supervision in accordance with the requirements of Chapter 15 of Division 3 of the Business and Professions Code at the request of Costis Manudes in January 1960.

J.F. Davidson
 Registered Civil Engineer No. 8612

ENGINEER'S NOTE

Bearings are based on the center line of Cypress Ave. which has a width of 57.23' as shown on R.S. 13/50, Records of Riverside County, California.

COUNTY SURVEYOR'S CERTIFICATE

This map was examined for compliance with the requirements of Chapter 15 of Division 3 of the Business and Professions Code this 27th day of March 1960.

A.C. Keith County Surveyor
 by *[Signature]*

13/50/31

RS 31/31