

IN THE CITY OF RIVERSIDE

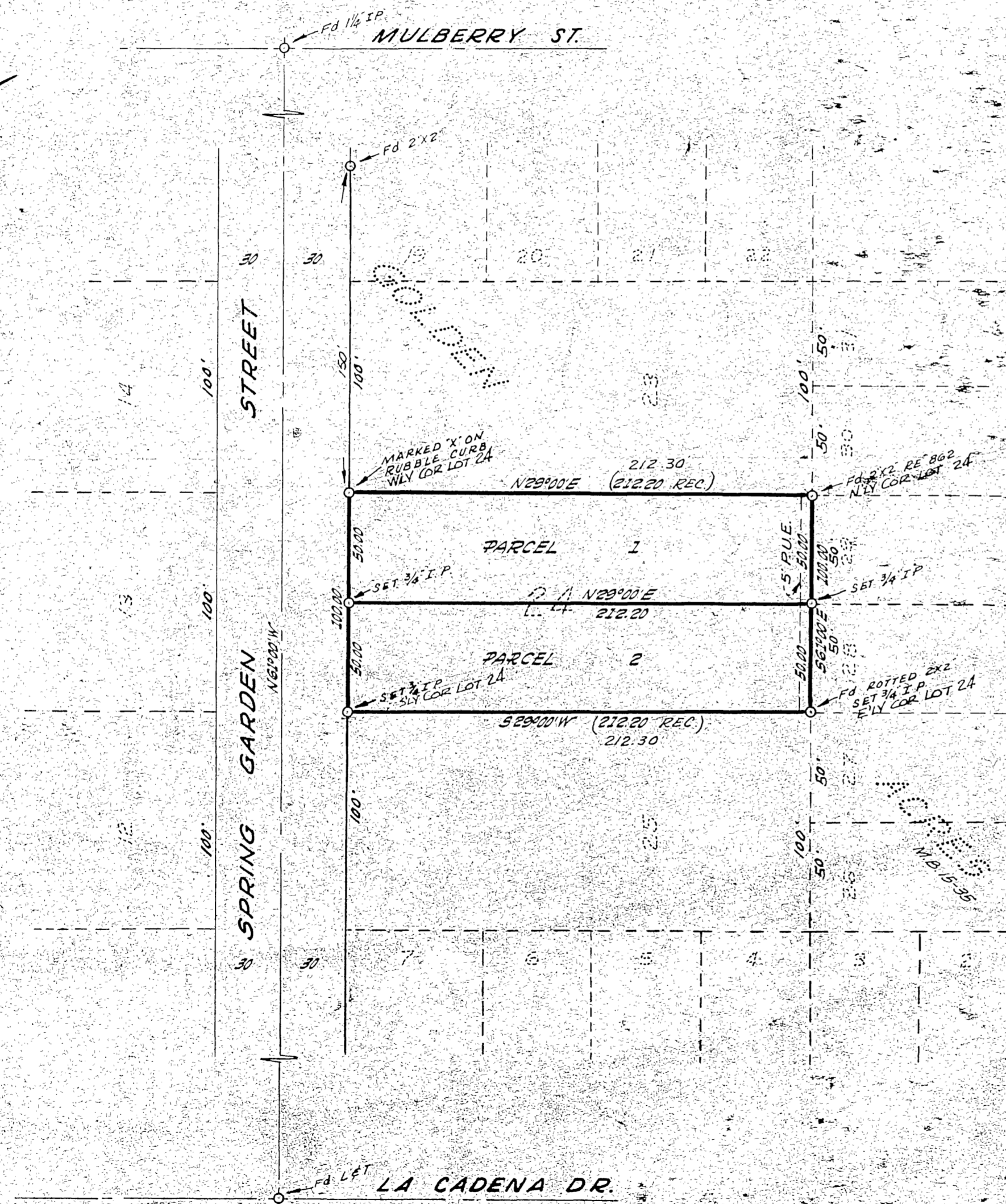
RECORD OF SURVEY

OF LOT 24 OF GOLDEN ACRES, M. B. 15-35, RECORDS
OF RIVERSIDE COUNTY, CALIFORNIA.

OCT. 1959 J. F. DAVIDSON, C. E. SCALE 1" = 50'

Filed for Record at request of County Surveyor this 22nd day of
March, 1960 at 9:00 A.M. in Book 35
of Record of Survey of Page 27
Fee \$5.00 No. 25194
JACK A. ROSS County Recorder
By O. G. West Deputy

MADE AT REQUEST OF HENRY CLARK SMITH AND J. E. HAWKINS



ENGINEER'S CERTIFICATE

This map correctly represents a survey made by me or under my direction in conformance with the requirements of Chapter 15 of Division 3 of the Business and Professions Code at the request of HENRY C. SMITH & J. E. HAWKINS in October 1959.

J. F. Davidson
Registered Civil Engineer No. 862

ENGINEER'S NOTE

Bearings are based on the Center Line of SPRING GARDEN STREET being N61°00'W as shown on map of "GOLDEN ACRES" Map Book 15-35 Records of Riverside County, California.

COUNTY SURVEYOR'S CERTIFICATE

This map has been examined for conformance with the requirements of Chapter 15 of Division 3 of the Business and Professions Code this 22nd day of March, 1960.

A. C. KEITH, County Surveyor
By *G. T. Worsley* Deputy
CITY RS # 519 FB 668-75

S-406
R/S 31/32

S-406
R/S 31/32