

IN THE CITY OF RIVERSIDE

RECORD OF SURVEY

OF LOTS 1, 2, 3, 4, BLOCK 11, OF ORANGE ACRES NO 3 SUBDIVISION, AS RECORDED IN BOOK 16 AT PAGE 47, OF MAPS, RECORDS OF RIVERSIDE COUNTY, CALIFORNIA, AND A PORTION OF LOT 1 1/2 OF BLOCK 71, ARLINGTON HEIGHTS AS RECORDED IN BOOK 11, AT PAGES 20, 21 OF MAPS, RECORDS OF SAN BERNARDINO COUNTY, CALIFORNIA T 3 S, R 5 W, SBB & M

BY
HUGH M. GALLAHER
CIVIL ENGINEER
FEBRUARY 1958
AND
DECEMBER 1959

THIS MAP CORRECTLY REPRESENTS A SURVEY MADE BY ME OR UNDER MY DIRECTION IN CONFORMANCE WITH THE REQUIREMENTS OF CHAPTER 15 OF DIVISION 3 OF THE BUSINESS AND PROFESSIONS CODE AT THE REQUEST OF WILLIAM T. JONES AND JANE H. FISHER, ALLIE M. LINES AND ELSIE RUTH LINES, said survey being made on February 1958 & December 1959.

Hugh M. Gallaher
R.G.E. 7304

ENGINEER'S NOTES:

BASIS OF BEARINGS IS THE CENTERLINE OF INDIANA AVENUE TAKEN AS N 49° 36' E AS SAME IS SHOWN ON MAP OF ORANGE ACRES NO 3 SUBDIVISION, RECORDED IN BOOK 16 OF MAPS AT PAGE 47 THEREOF, RECORDS OF RIVERSIDE COUNTY, CALIFORNIA FOUND MONUMENTS AS NOTED AT ALL POINTS SHOWN THUS ● SET MONUMENTS AS NOTED AT ALL POINTS SHOWN THUS ○

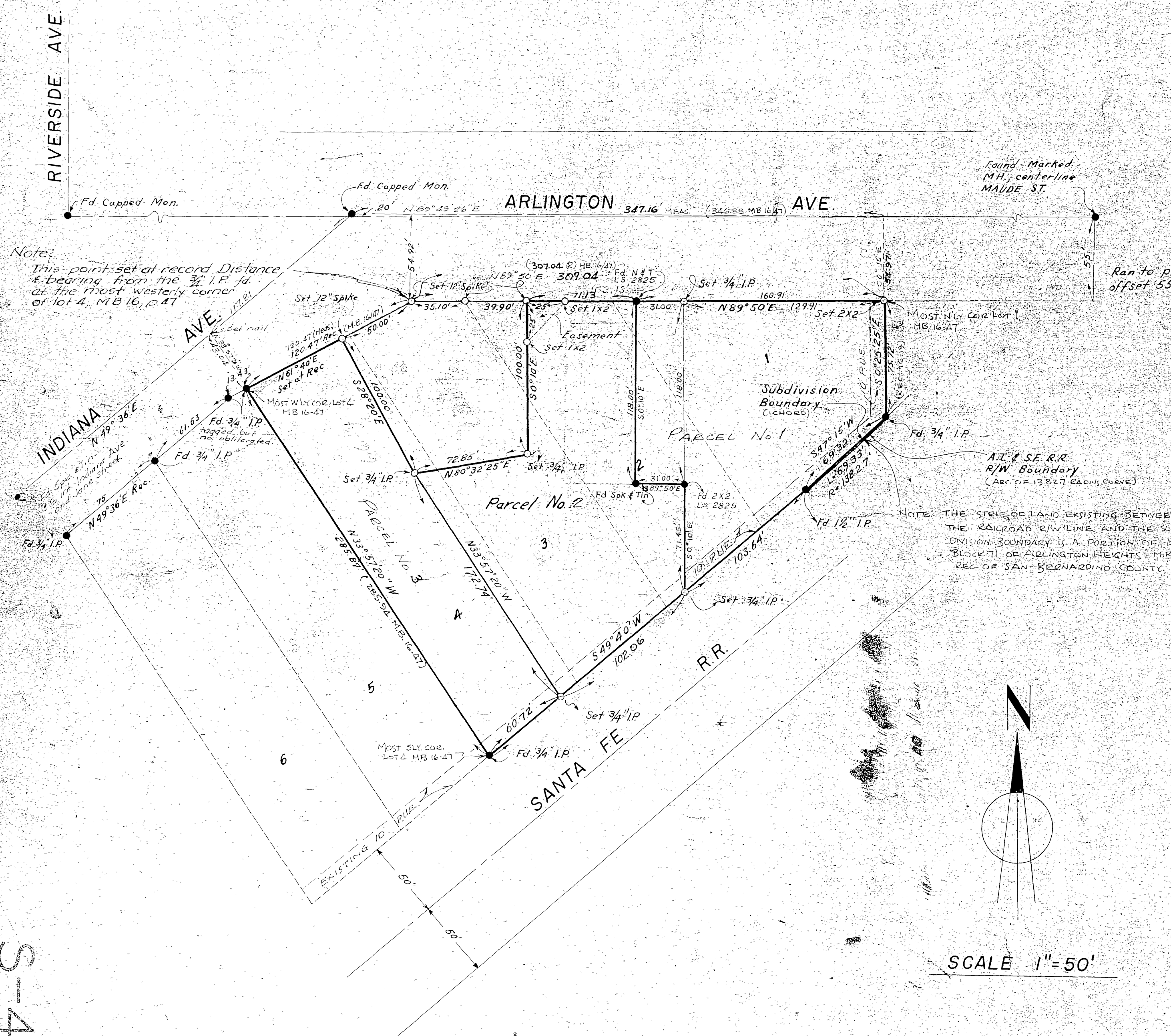
THIS MAP HAS BEEN EXAMINED FOR CONFORMANCE WITH THE REQUIREMENTS OF CHAPTER 15 OF DIVISION 3 OF THE BUSINESS AND PROFESSIONS CODE THIS 8th DAY OF April 1958 60

A.C. Keith
COUNTY SURVEYOR
by *E.T. Worsley*
Deputy

FILED FOR RECORD AT THE REQUEST OF COUNTY SURVEYOR THIS 8th DAY OF April 1958 AT 10:10 A.M. IN BOOK 31 OF RECORD OF SURVEY AT PAGE 46

FEE \$ 5.00
NO. 21892

Jack A. Ross
COUNTY RECORDER
BY *O.A. Wheat*
DEPUTY



Note:
This point set at record distance & bearing from the 3/4" I.P. fd. at the most westerly corner of lot 4, MB 16, p. 47

NOTE: THE STRIP OF LAND EXISTING BETWEEN THE RAILROAD R/W BOUNDARY AND THE SUBDIVISION BOUNDARY IS A PORTION OF LOT 1 1/2 BLOCK 71 OF ARLINGTON HEIGHTS MB 11/20/21 REC. OF SAN BERNARDINO COUNTY.

SCALE 1"=50'

S-408
RS 3/1/7

S-408
RS 3/1/7