

RECORD OF SURVEY

OF A PORTION OF THE N.W. 1/4 OF THE N.E. 1/4 OF THE S.W. 1/4 OF SEC. 34 T-2-S R-5-W S.B.B.&M.

SURVEYED IN JULY, 1959

IN THE CITY OF RIVERSIDE

E. E. ELLIS, R.C.E. NO. 1504

This map correctly represents a survey made by me or under my direction in conformance with the requirements of Chapter 15 of Division 3 of Business and Professions Code at the request of Southern California Gas Company.

Signed *E. E. Ellis*
R.C.E. No. 1504

This map has been examined for conformance with the requirements of Chapter 15 of Division 3 of the Business and Professions Code this 13th day of April, 1960.

Signed *H. C. Keith*
County Surveyor

By *G. T. Worsley*
Deputy

The bearings shown on this map are based on the bearing of the centerline of Central Avenue as shown on map of Sun Gold Terrace, Unit No. 2, recorded in Book 24 of Maps at Page 47, records of Riverside County, California, said bearing being N 89° 16' E.

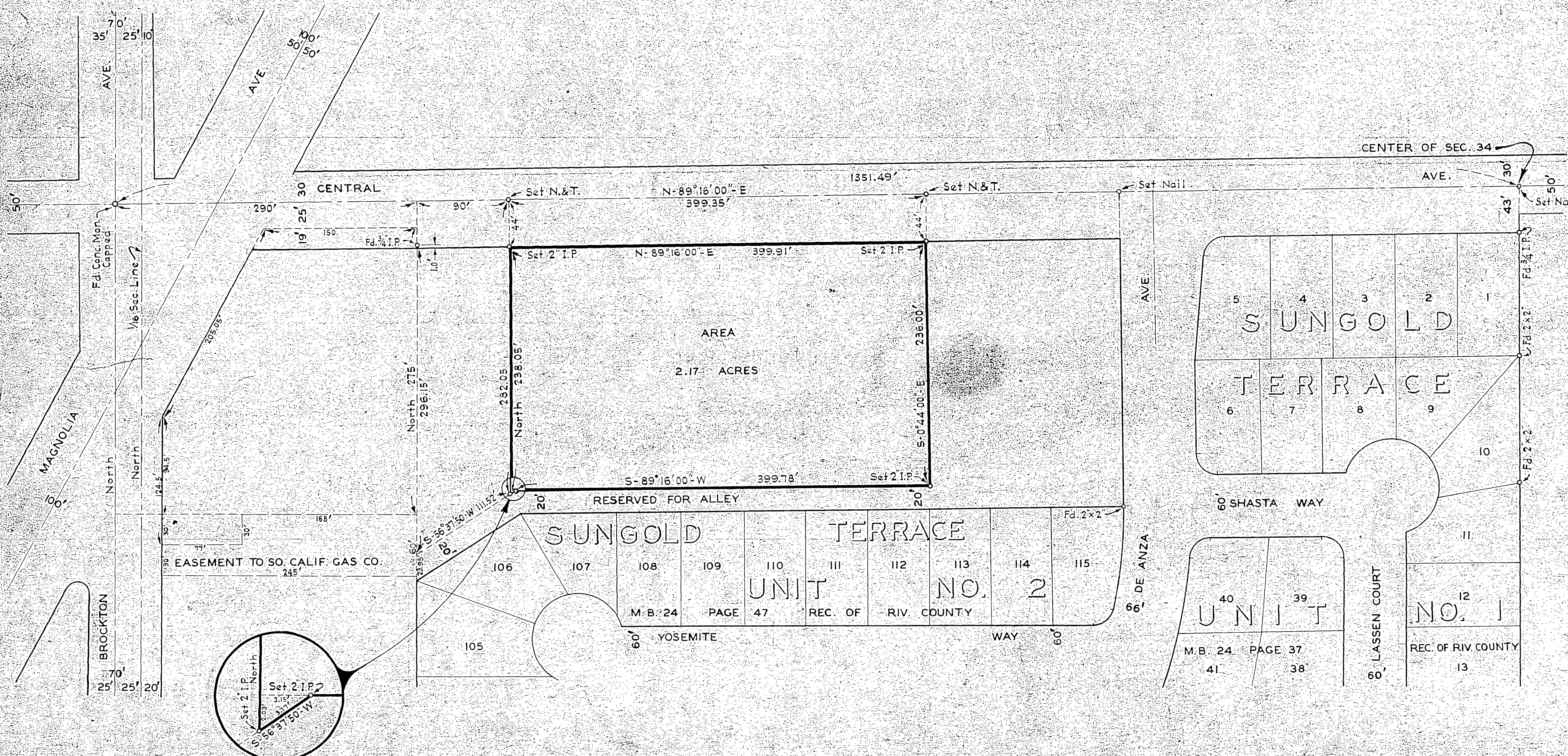
The 2" iron pipe monuments set by this survey are filled with concrete with an escutcheon pin and tag reading R.E. 1504.

Filed for record at the request of County Surveyor this 14th day of April, 1960 at 9:00 M. in book 31 of Record of Survey at page 51

Fee \$5.00
No. 33049

Jack A. Ross
County Recorder

By *D. A. Great*
Deputy



R/S 31/51 S-409

R/S 31/51 S-409