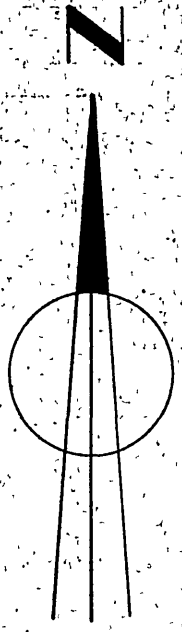


IN THE COUNTY OF RIVERSIDE

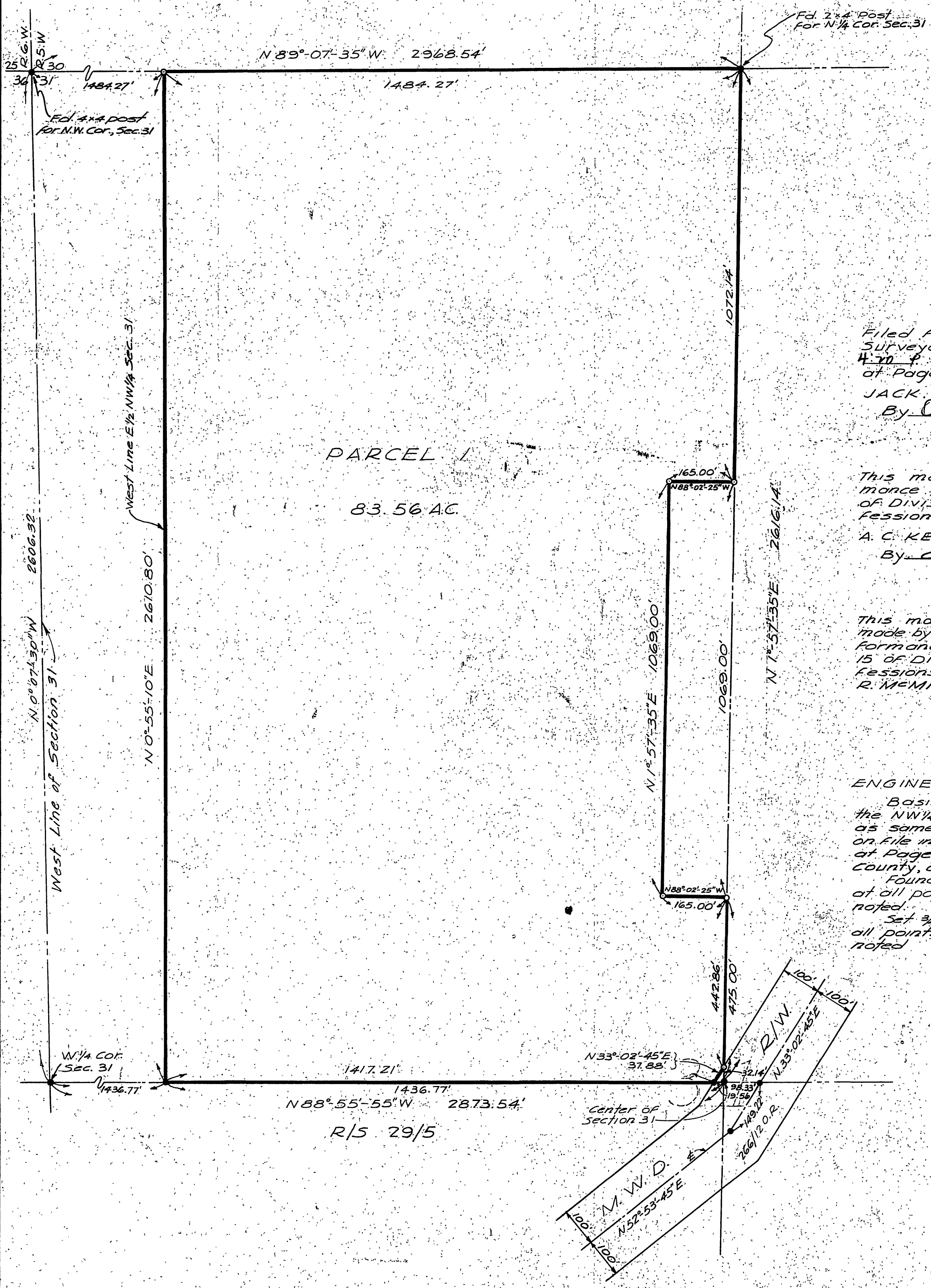
RECORD OF SURVEY

OF A PORTION OF THE E 1/2 OF THE NW 1/4 OF SEC. 31,
T.3S., R.5W., S.B.B.&M., AS SHOWN BY SECTIONIZED SURVEY OF
THE RANCHO EL SOBRANTE DE SAN JACINTO RECORDED IN
MAP BOOK 7, AT PAGE 10 THEREOF, RECORDS OF SAN BERNARDINO, CALIF.

BY
ALBERT A. WEBB ASSOCIATES
CIVIL ENGINEERS
MARCH, 1960



SCALE: 1" = 200'



Filed for Record at request of County
Surveyor this 29th day of April, 1960 at
4:30 P. M. in Book 31 of Records of Survey
at Page 70 Fee \$15.00 No 85156
JACK A. ROSS County Recorder
By O. A. Mead Deputy

This map has been examined for conform-
ance with the requirements of Chapter 15
of Division 3 of the Business and Pro-
fessions Code this 29th day of April, 1960.
A. C. KEITH, County Surveyor
By G. T. Worely Deputy

This map correctly represents a survey
made by me or under my direction in con-
formance with the requirements of Chapter
15 of Division 3 of the Business and Pro-
fessions Code at the request of Donald
R. McMillan in Feb. 1960.

Ernest N. Webb
R.C.E. No 9876

ENGINEER'S NOTES
Basis of Bearings is the south line of
the NW 1/4 of Section 31, taken as N 88° 55' 55" W,
as same is shown on Record of Survey
on file in Book 29 of Records of Survey
at Page 5 thereof, Records of Riverside
County, California.
Found 3/4" iron pipe, tagged RE 9876
at all points shown thus unless otherwise
noted.
Set 3/4" iron pipe, tagged RE 9876 at
all points shown thus unless otherwise
noted.