

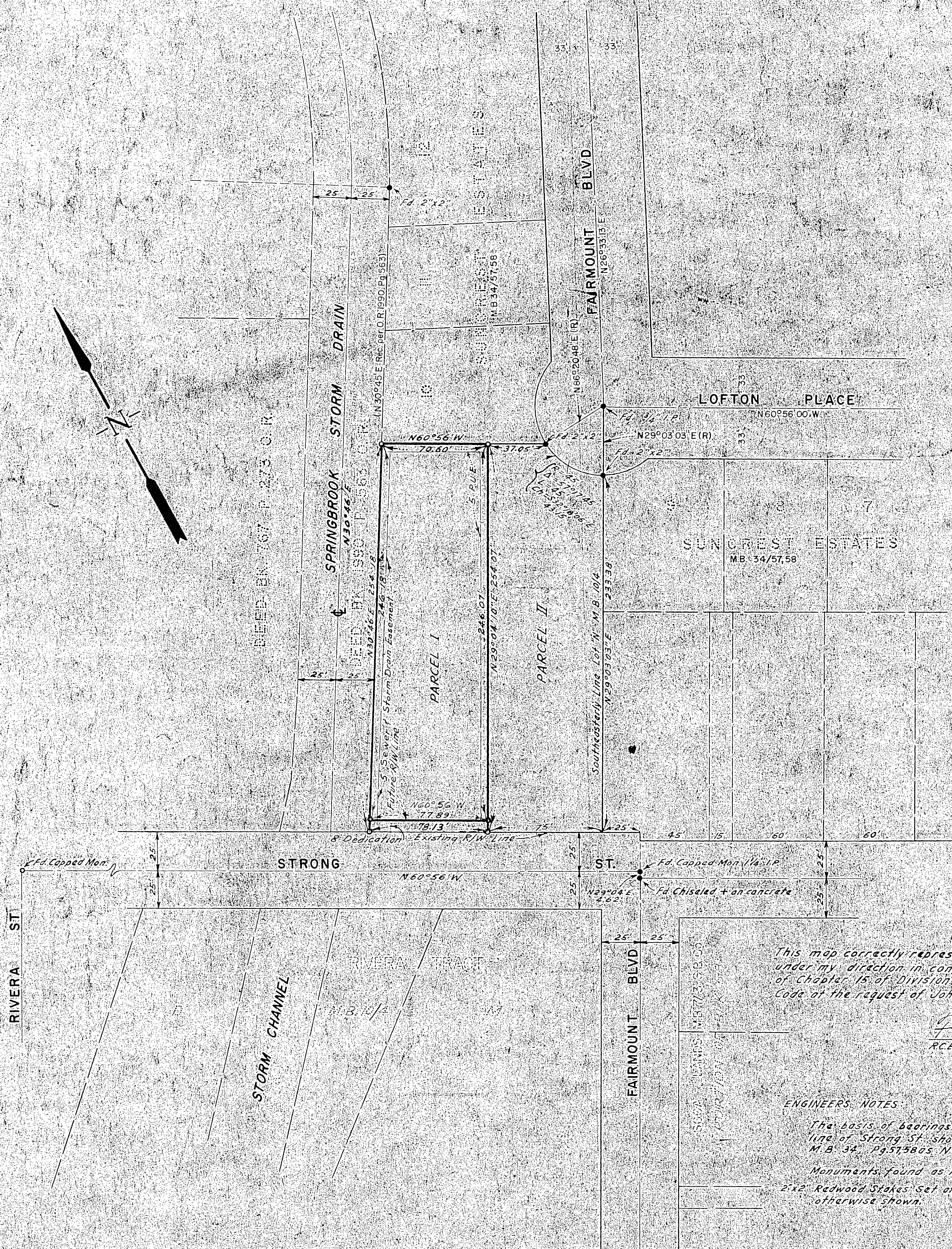
RS 31/84 S-416

RECORD OF SURVEY

IN THE CITY OF RIVERSIDE
OF A PORTION OF LOT "N" OF RIVERA TRACT
M.B. 10, P. 4, RECORDS OF RIVERSIDE COUNTY

OCTOBER 1959 RIV. ENG. CO. INC. SCALE 1"=50'
RIVERSIDE, CALIF.

Filed for Record at the request of County Surveyor
this 24th day of May 1960 at 10:44 AM in book
of Record of Survey of page 844
fee \$5.00
No. 46932 By Jack A. Ross
County Recorder
Deputy



This map correctly represents a survey made by me or under my direction in conformance with the requirements of Chapter 15 of Division 3 of the Business and Professions Code at the request of John Lozano in October, 1959.

F. B. Smart
RCE 4210

ENGINEERS' NOTES:
The basis of bearings shown on this map is the center line of Strong St. shown on a map of Suncrest Estates M.B. 34, P. 57, 58, N60°56'W.
Monuments found as noted.
2"x2" Redwood Stakes Set at Lot Corners unless otherwise shown.

This map has been examined for conformance with the requirements of Chapter 15 of Division 3 of the Business and Professions Code this 23rd day of May 1960.

A.C. Keith
County Surveyor
By E.T. Dowdy
Deputy

RS 31/84 S-416