

31/89  
R/S 31/89

# RECORD OF SURVEY

## DESCRIPTION OF PROPERTY SURVEYED

BEING A PORTION OF LOTS 15 AND 16, OF BLOCK 53, AS SHOWN IN MAP BOOK I, PAGE 40 OF RIVERSIDE COUNTY. ALSO BEING A PORTION OF LOTS 13 AND 14, OF BLOCK 50 LANDS OF THE RIVERSIDE LAND AND IRRIGATING COMPANY AS SHOWN IN MAP BOOK I, PAGE 70, SAN BERNARDINO COUNTY. ALSO BEING A PORTION OF BLOCK I, BLOCK 3, LOT DD (WATT AVE.) AND LOTS 2, 3, 8 AND 9 OF BLOCK 5 OF LA SIERRA GARDENS AS SHOWN IN MAP BOOK 11 PAGE 50, RIVERSIDE COUNTY CALIFORNIA.

Filed for record at the request of County Surveyor this 10<sup>th</sup> day of June 1960 at 2:20 P. M. In book 31 of Record of Survey at pages 89, 90 & 91  
Fee None  
No. 51130  
By Jack A. Ross Recorder  
O.A. Wheat Deputy

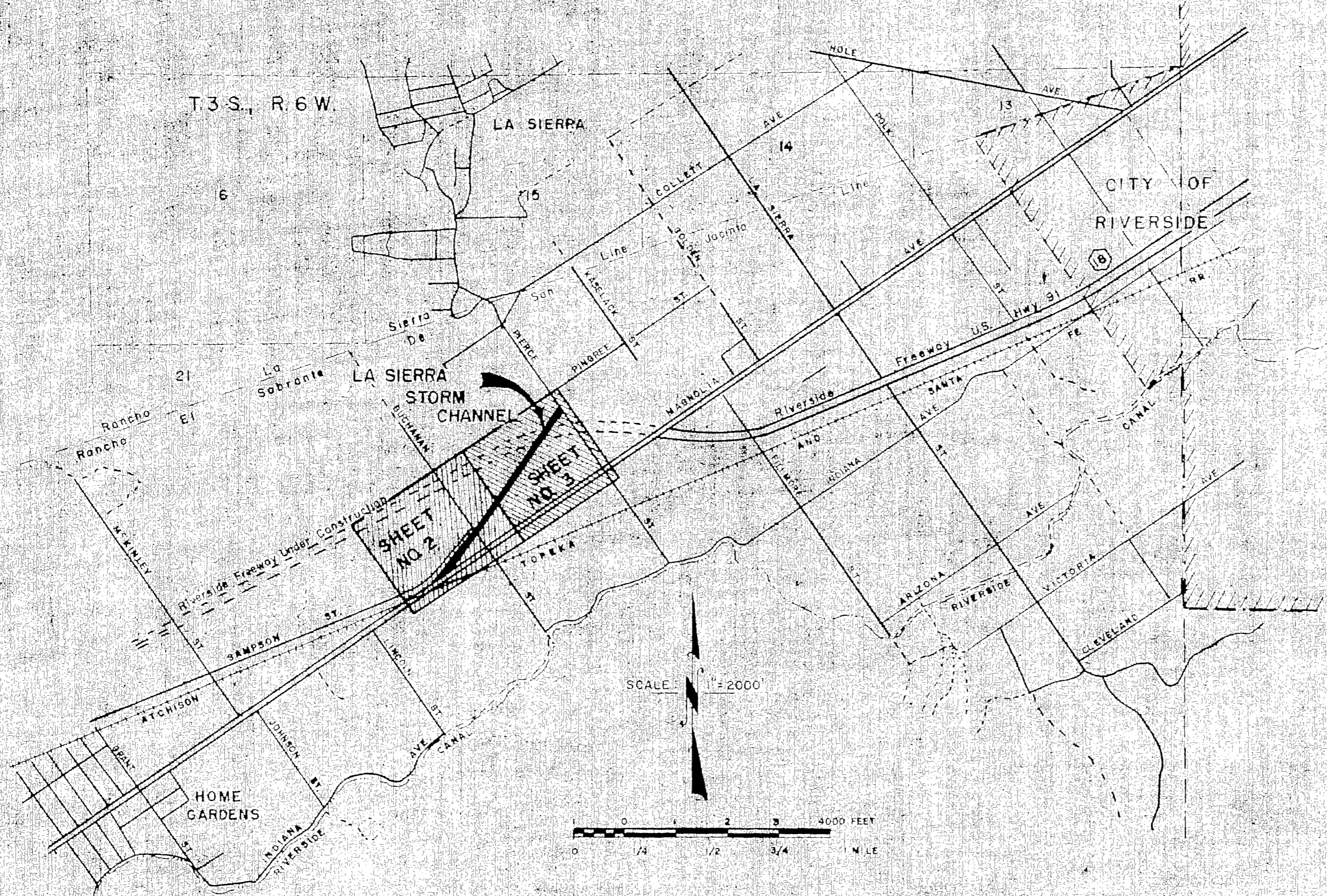
by

Riverside County Flood Control And Water Conservation District

## ENGINEER'S CERTIFICATE

This map correctly represents a survey made by me or under my direction in conformance with the requirements of Chapter 15 of Division 3 of the Business and Professions Code at the request of Riverside County Flood Control & Water Conservation District in April 1960.

John H. Kinsman  
Chief Engineer R.C.E. No. 8822



## ENGINEER'S NOTE

1. BASIS OF BEARINGS for this Survey is the centerline of Magnolia Avenue (N55°41'245" E) as shown in M.B. 11/50 La Sierra Gardens.
2. Iron Pipe or monuments found shown thus
3. Monuments set are 6" Round Concrete with Brass tag m.k.d. R.C.F.C. & W.C.D. shown thus
4. nothing set position determined by Calculation unless otherwise noted. shown thus

## COUNTY SURVEYOR'S CERTIFICATE

This map has been examined for conformance with the requirements of Chapter 15 of Division 3 of the Business and Professions Code this 10th day of June 1960

A.C. Keith  
County Surveyor  
By G.T. Woodley  
Deputy

R.S. 31/89

31/90

# RECORD OF SURVEY

LANDS OF THE  
AND  
M.B. 1/70  
RIVERSIDE LAND  
IRRIGATING CO.  
S.B. COUNTY

BLOCK 53

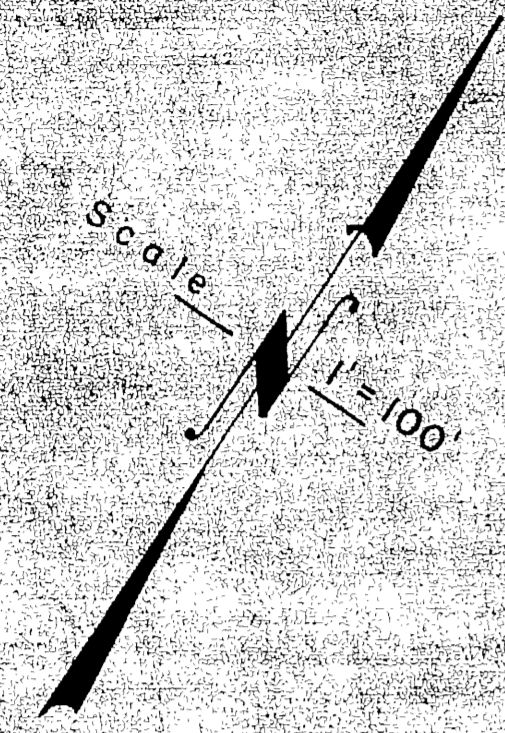
BLOCK 50

M.B. 1/40 RIVERSIDE COUNTY

BUCHANAN AVENUE

MAGNOLIA AVENUE

MATCH SHEET NO. 3



R/W CURVE DATA

Δ = 17° 32' 45"
R = 472'
T = 72.84'
L = 144.34'
R <sub>2</sub> = 522'
T <sub>2</sub> = 80.56'
L <sub>2</sub> = 159.85'

R/W CURVE DATA

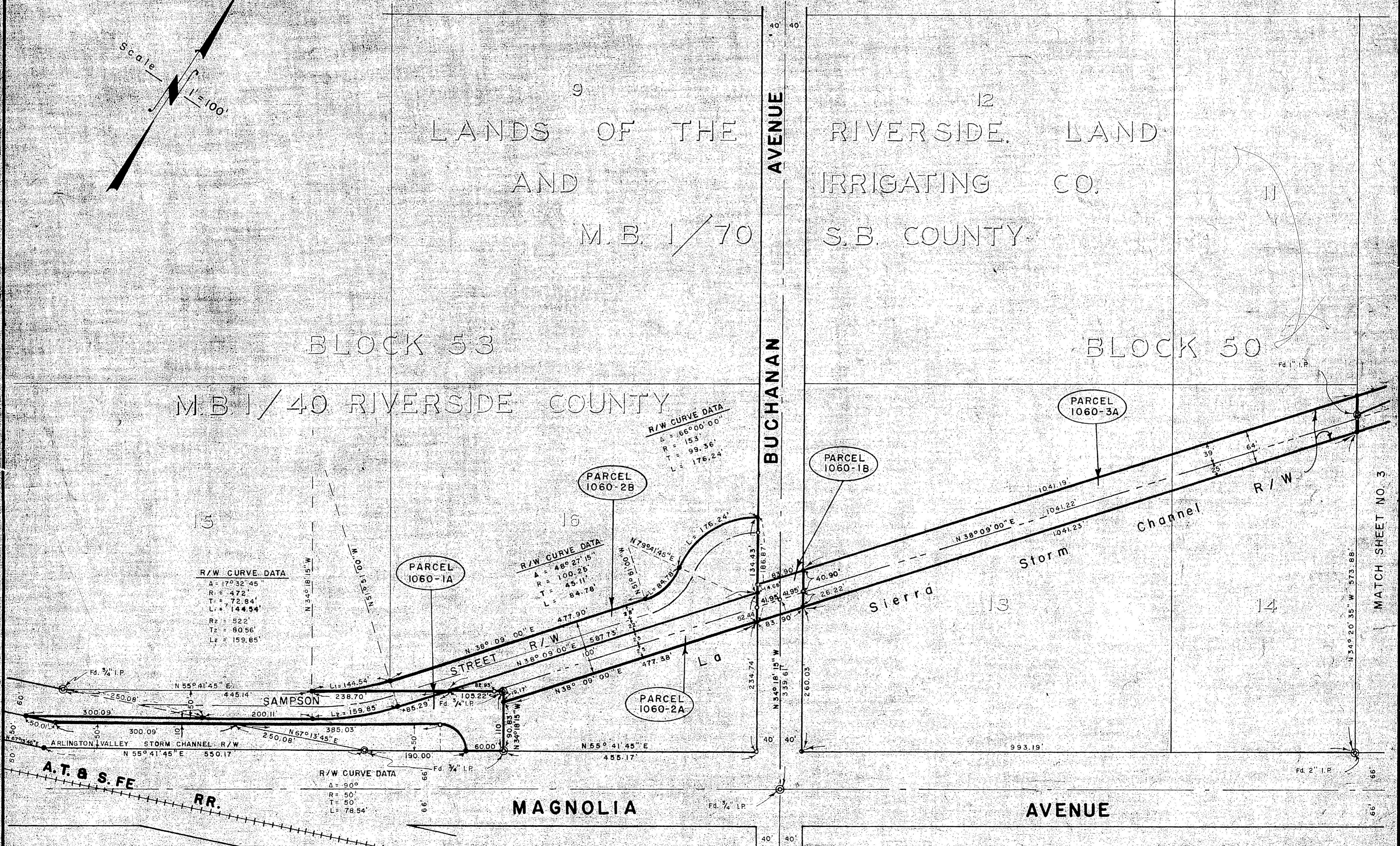
Δ = 66° 00' 00"
R = 153'
T = 99.36'
L = 176.24'

R/W CURVE DATA

Δ = 48° 27' 15"
R = 100.25'
T = 45.11'
L = 84.78'

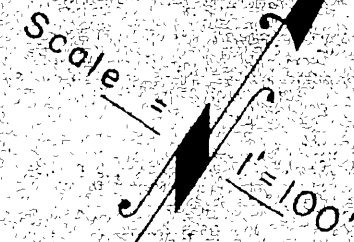
R/W CURVE DATA

Δ = 90°
R = 50'
T = 50'
L = 78.54'



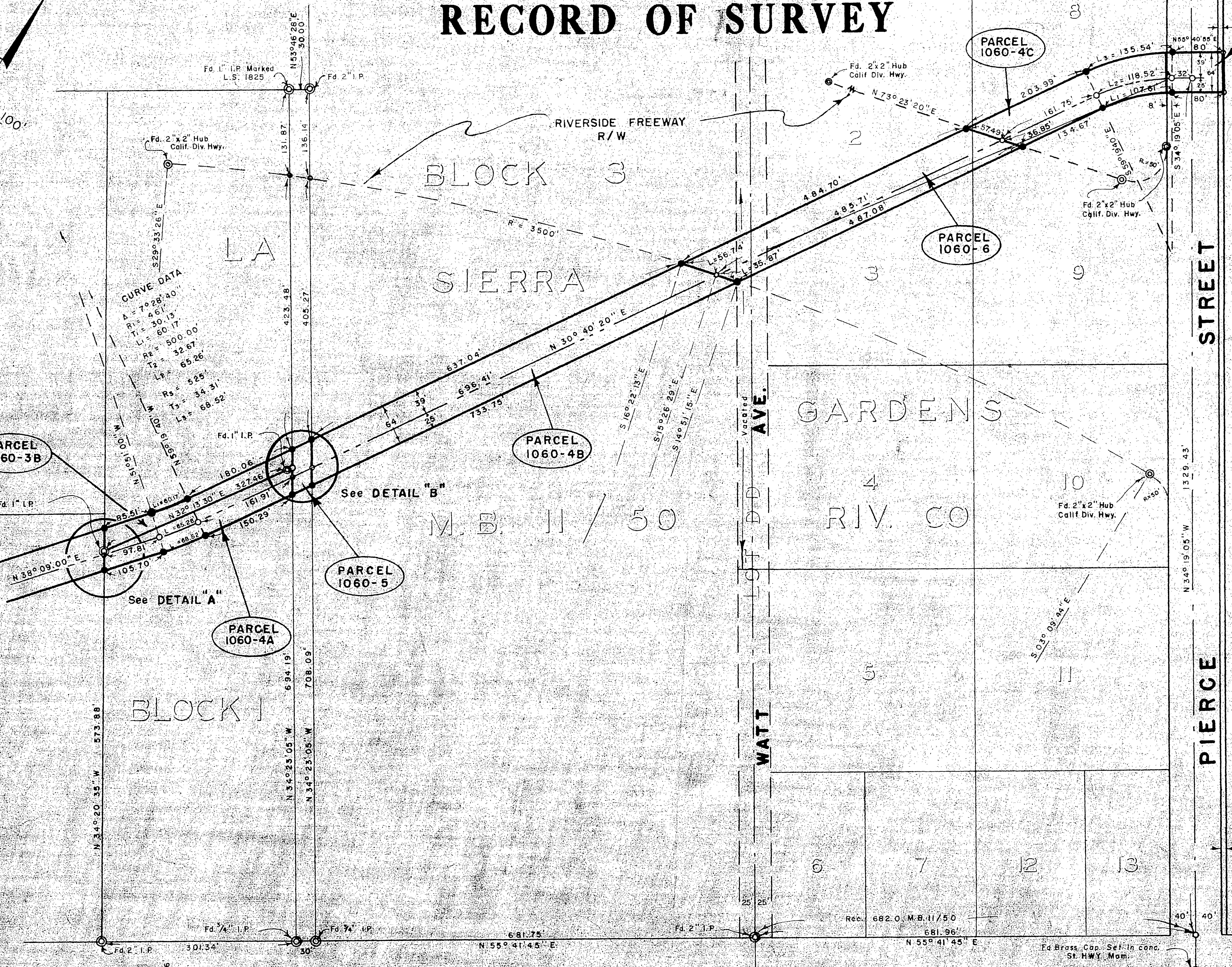
R.S. 31/90

# RECORD OF SURVEY



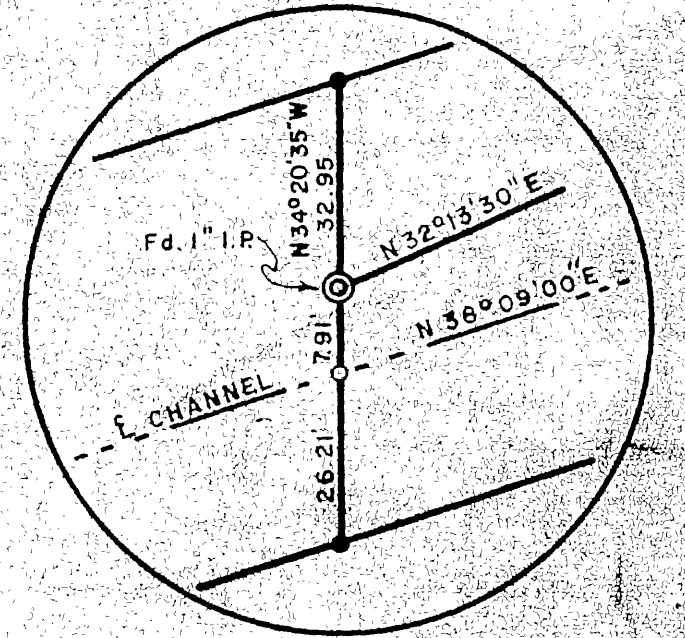
MATCH SHEET NO 2

R/S 31/91

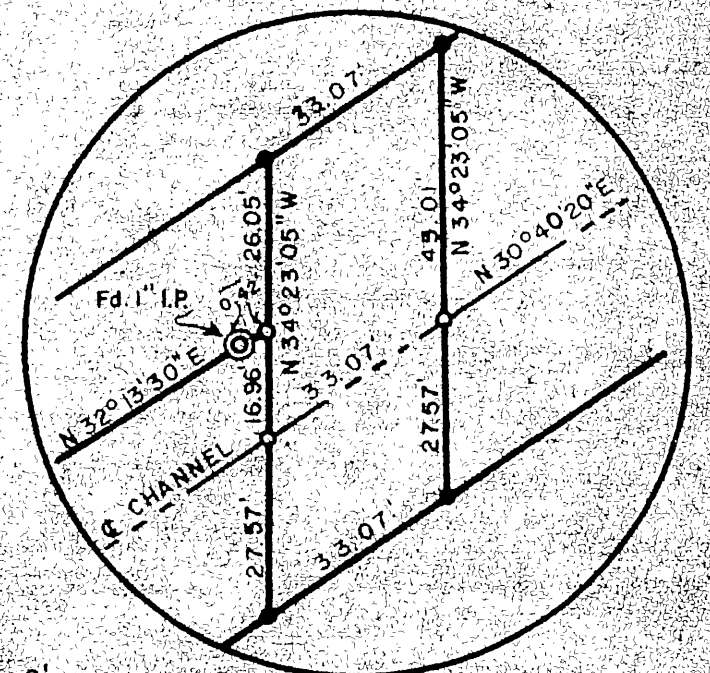


**CURVE DATA**  
 $\Delta = 70^{\circ}28'40''$   
 $R_1 = 461.15'$   
 $T_1 = 30.15'$   
 $L_1 = 500.00'$   
 $R_2 = 32.67'$   
 $T_2 = 65.26'$   
 $L_2 = 525'$   
 $R_3 = 34.31'$   
 $T_3 = 68.52'$   
 $L_3 = 68.52'$

**CURVE DATA**  
 $\Delta = 25^{\circ}00'35''$   
 $R_1 = 246.52'$   
 $T_1 = 54.67'$   
 $L_1 = 107.61'$   
 $R_2 = 271.52'$   
 $T_2 = 60.22'$   
 $L_2 = 118.52'$   
 $R_3 = 310.52'$   
 $T_3 = 68.87'$   
 $L_3 = 135.54'$



**DETAIL "A"**  
Scale: 1" = 20'



**DETAIL "B"**  
Scale: 1" = 20'

MAGNOLIA

AVE N U E

R/S 31/91