

31/97

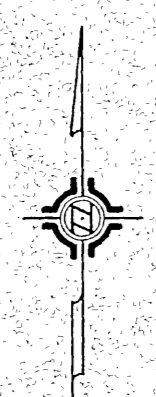
RECORD OF SURVEY

OF A PORTION OF BLOCK 87 OF SAYWARD & EVANS TRACT, M.B. 3, PAGE 2, RECORDS OF SAN BERNARDINO COUNTY, CALIFORNIA.

March 1960 J. F. DAVIDSON, C.E. Scale 1" = 40'

Filed for Record at request of County Surveyor this 10th day of June, 1960, at 3:00 P.M. in Book 52 of Record of Surveys of Page 917. Fee \$15.00 No. 52018. JACK A. ROSS, County Recorder. By O. A. Wheat, Deputy.

Survey made at request of Abel Bliss



SAYWARD & EVANS TRACT
M.B. 3/2 S.B. Co.

BLOCK 87

WASHINGTON SQUARE
DIVISION "B"
M.B. 4-71

PARCEL NO. 1
R.S. 30-82

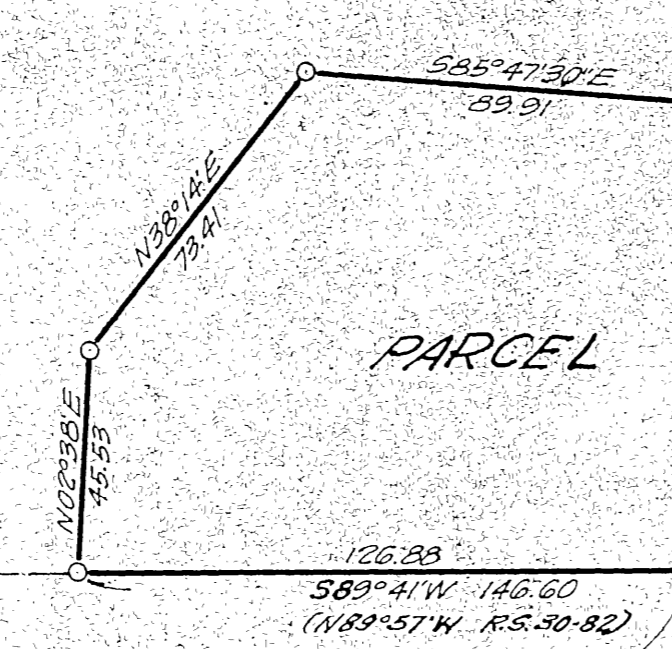
PARCEL 1
11,009 Ac.

(0.271 Ac.)

5 R.U.E. (10,738 Ac.)

53' Easement for Street & Utilities

LEWIS AVE.



PARCEL 1
3/4" Pipe in W. Corner Lot 9, Block "A", Berkshire Hills Tr.

5 R.U.E.

BLOCK A

BLOCK A

ARLINGTON HEIGHTS
M.B. 11/20-21 S.B. Co.

BERKSHIRE HILLS TRACT
M.B. 13/57

ENGINEER'S CERTIFICATE

This map correctly represents a survey made by me or under my direction in conformance with the requirements of Chapter 15 of Division 3 of the Business and Professions Code at the request of Abel Bliss in February, 1960.

George E. McCarty
Registered Civil Engineer, No. 10688

ENGINEER'S NOTE

Bearings are based on the Northwesterly line of 'BERKSHIRE HILLS TRACT' M.B. 13/57, Records of Riverside County, California, being S28°55'W as shown on Deed of Record filed on Feb. 13, 1957 as Instrument No. 10696. O indicates 3/4" Pipe tagged R.E. 862 set. @ indicates 3/4" Pipe found.

COUNTY SURVEYOR'S CERTIFICATE

This map has been examined for conformance with the requirements of Chapter 15 of Division 3 of the Business and Professions Code this 6th day of June, 1960.

A. C. KEITH, County Surveyor. By G. T. Woolley, Deputy. R.S. 699/27

RS 31/92 S-417

RS 31/92 S-417

1157 RS