

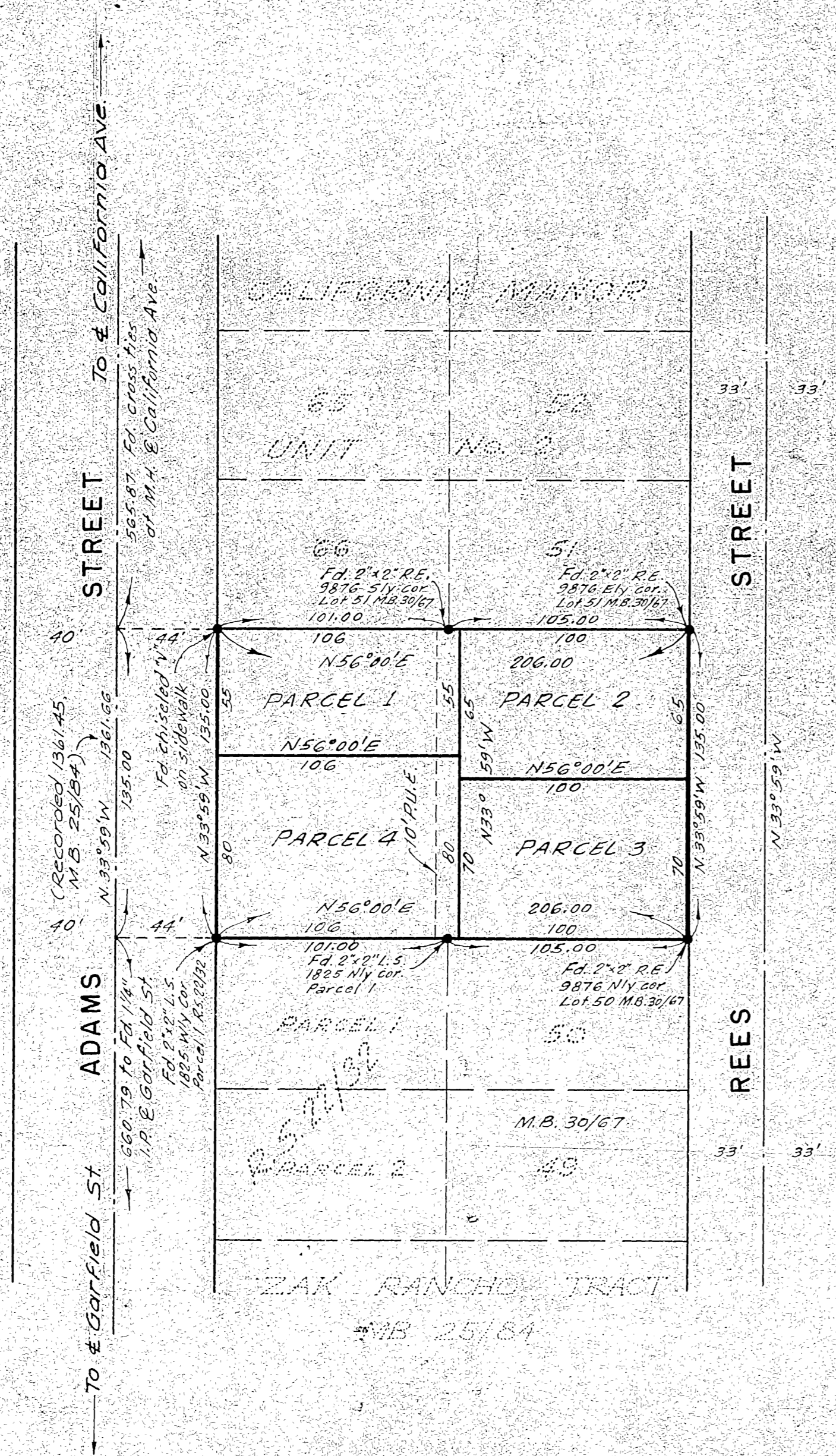
IN THE CITY OF RIVERSIDE

RECORD OF SURVEY

OF A PORTION OF LOT 4 BLOCK 15
R.L. & I. CO. MAP BOOK 1770, S.B. CO.

BY
ALBERT A. WEBB ASSOCIATES
CIVIL ENGINEERS
March 1960

Filed for Record at request of County Surveyor
this 10th day of June 1960 attached in
Book 31 of Record of Survey at Page 94
Fee \$5.00 No. 52051
JACK A. ROSS County Recorder
By C. A. Neal Deputy



SURVEY MADE AT THE REQUEST OF MERVYN G. FLORY, JR.

ENGINEER'S CERTIFICATE
This map correctly represents a survey made by me or under my direction in conformance with the requirements of Chapter 15 of Division 3 of the Business and Professions Code at the request of MERVYN G. FLORY, JR. in March 1960.
Ernest N. Walsh
Registered Civil Engineer, No. 9876

ENGINEER'S NOTES
Basis of Bearing is the \angle of ADAMS STREET taken as N 33° 59' W as per CALIFORNIA MANOR UNIT NO. 2 on file in Book 30, page 67 of Maps, Records of Riv. Co., Calif.
Found Monuments as noted at all points shown.
Set 3/4" I.P. tagged R.E. 9876 at all lot corners unless otherwise noted.

COUNTY SURVEYOR'S CERTIFICATE
This map has been examined for conformance with the requirements of Chapter 15 of Division 3 of the Business and Professions Code this 6th day of June 1960.
A. C. KEITH County Surveyor
By A. P. Worsley Deputy

RS 31/94
S-418
RS 31/94

RS 31/94
S-418