

31/95

IN THE CITY OF RIVERSIDE

# RECORD OF SURVEY

OF A PORTION OF LOTS 288 & 289 OF THE LAND OF THE R. L. AND I. CO., M. B. 4  
PAGE 75, RECORDS OF SAN BERNARDINO COUNTY, CALIFORNIA.

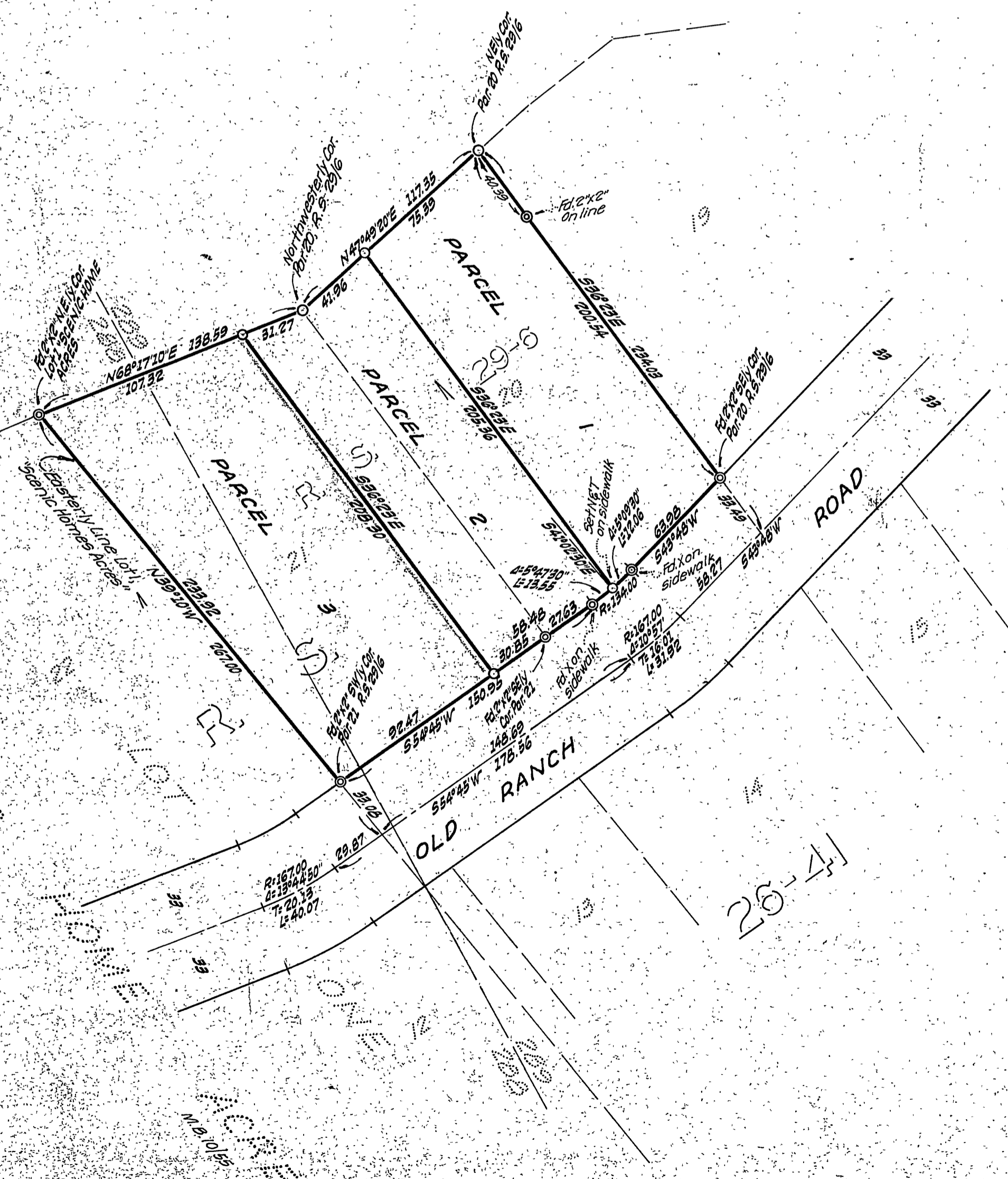
MARCH 1960

J. F. DAVIDSON, C. E.

SCALE 1" = 50'

Filed for Record at request of County Surveyor this 15<sup>th</sup> day of  
 1960 at 10:02 A.M. at San Bern Co. Clerk's Office  
 of Records of Survey of Page 75  
 No. 509 No. 53272  
 JACK A. ROSS County Recorder  
 By Allen Waldron Deputy

MADE AT REQUEST OF M. R. NIMS, JR.



### ENGINEER'S CERTIFICATE

This map correctly represents a survey made by me or under my direction in conformance with the requirements of Chapter 15 of Division 3 of the Business and Professions Code at the request of M. R. NIMS, JR. in March, 1960.

George E. McCarty  
 Registered Civil Engineer No. 10638

### ENGINEER'S NOTE

Bearings are based on the center line of Old Ranch Road being S54°45'W as shown on R. S. 26/41, Records of Riverside County, California.

○ indicates 3/4" Pipe tagged R. E. 662 unless noted otherwise.

### COUNTY SURVEYOR'S CERTIFICATE

This map has been examined for conformance with the requirements of Chapter 15 of Division 3 of the Business and Professions Code this 15<sup>th</sup> day of June, 1960.

A. C. KEITH County Surveyor  
 By E. T. Worsley Deputy

RS 31/95 S-419

RS 31/95 S-419

1960