

RS 32/10 S-422

IN THE CITY OF RIVERSIDE

# RECORD OF SURVEY

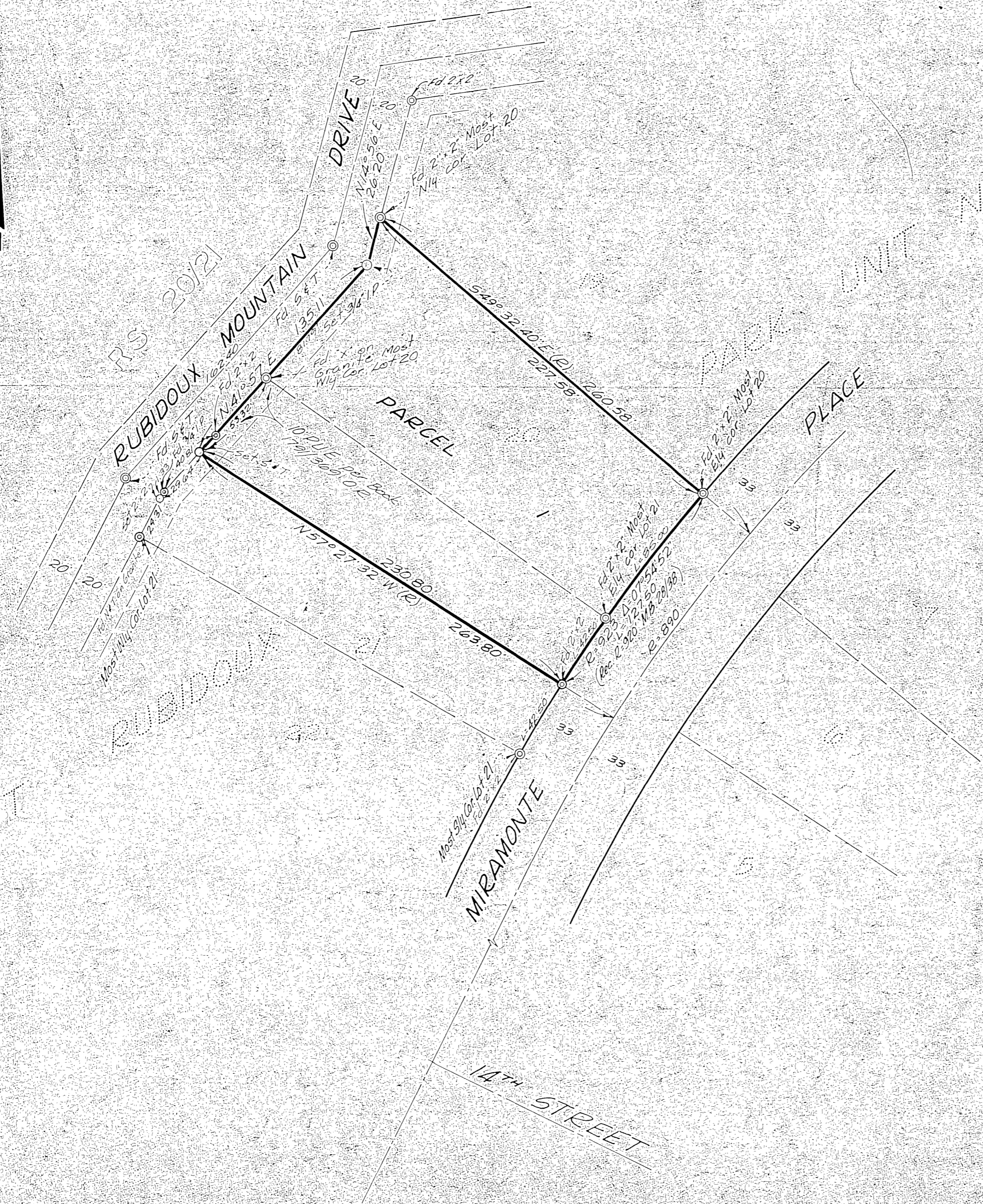
OF LOT 20 AND A PORTION OF LOT 21 OF MOUNT RUBIDOUX PARK UNIT NO. 4  
M.B. 28/37,38, RECORDS OF RIVERSIDE COUNTY, CALIFORNIA

APRIL 1960

J. F. DAVIDSON, C. E.

SCALE 1" = 50'

Filed for Record at request of County Surveyor this 24th day of  
of Record of Survey of Page 13 of 13 in Book  
Fee \$1.00 No. 57718  
JACK A. ROSS County Recorder  
By D. A. Mead Deputy



MADE AT REQUEST OF MRS. GENE MILLS

### ENGINEER'S CERTIFICATE

This map correctly represents a survey made by me or under my direction in conformance with the requirements of Chapter 15 of Division 3 of the Business and Professions Code at the request of Mrs. Gene Mills in April, 1960.

George E. McCarty  
Registered Civil Engineer No. 10688

### ENGINEER'S NOTE

Bearings are based on the North line of Lot 20, being 549°32'40\"/>

### COUNTY SURVEYOR'S CERTIFICATE

This map has been examined for conformance with the requirements of Chapter 15 of Division 3 of the Business and Professions Code this 28th day of June, 1960.

A. C. KEITH, County Surveyor.  
By C. T. Worley Deputy

RS 32/10 S-422