

# IN THE CITY OF RIVERSIDE RECORD OF SURVEY

SHOWING A SURVEY OF A PORTION OF THE N.E. 1/4 OF THE S.E. 1/4 OF THE  
S.W. 1/4 OF SECTION 32, T.2S., R.5W., S.B.B. & M.

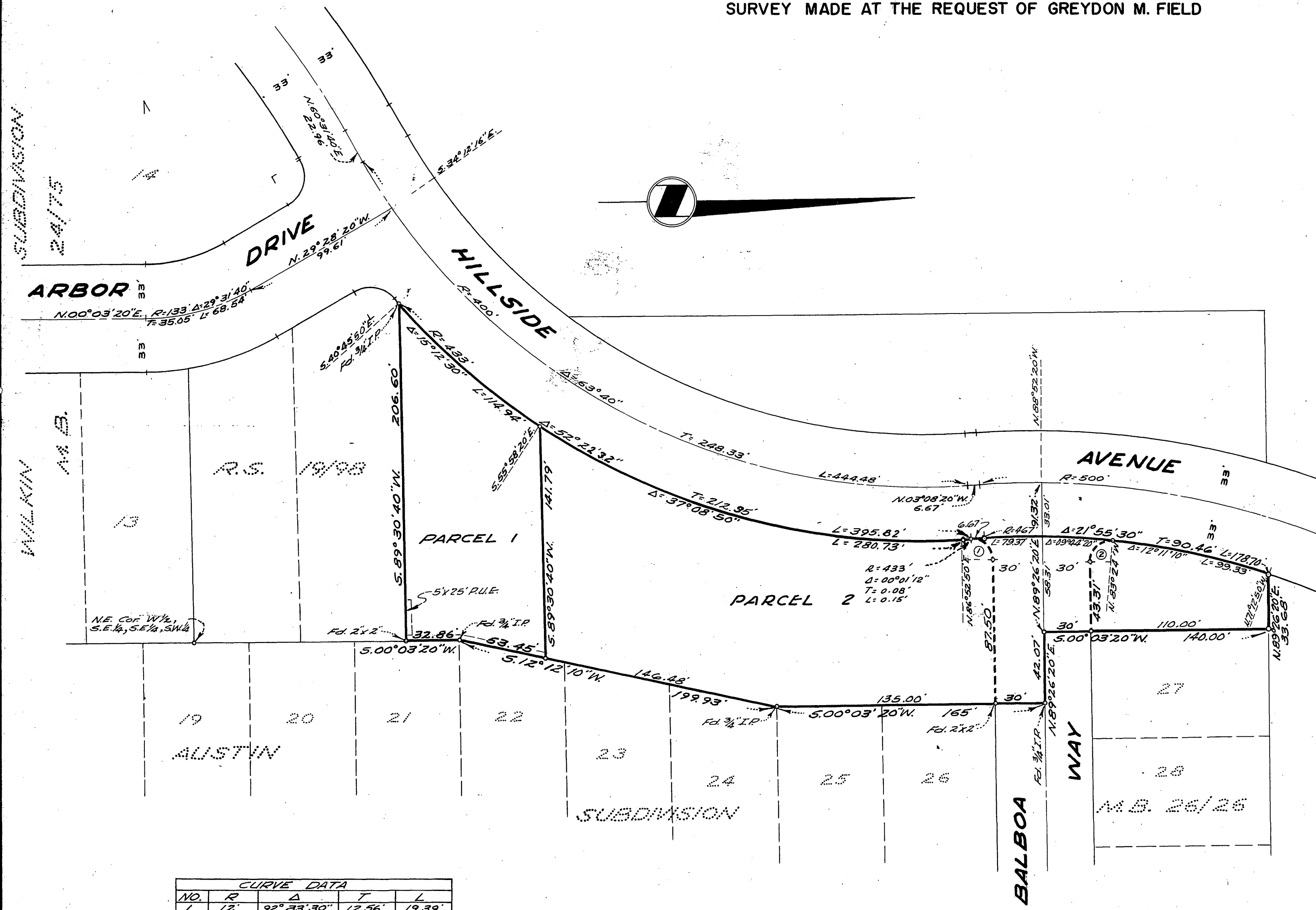
JUNE , 1960

SCALE 1"=50'

J. F. DAVIDSON , C.E.

SURVEY MADE AT THE REQUEST OF GREYDON M. FIELD

Filed for Record at request of County Surveyor this 7 day of July, 1960 at 11:05 A.M. in Book 32  
of Record of Survey at Page 19  
Fee \$ 5.00 No. 60005  
JACK A. ROSS County Recorder  
By William D. Balogh deputy



CURVE DATA				
NO.	R	Δ	T	L
1	12'	92°33'30"	12.56'	19.39'
2	12'	97°09'40"	13.60'	20.35'

### ENGINEER'S CERTIFICATE

This map correctly represents a survey made by me or under my direction in conformance with the requirements of Chapter 15 of Division 3 of the Business and Professions Code at the request of GREYDON M. FIELD in December, 1956.

J. F. Davidson  
Registered Civil Engineer No. 862

### COUNTY SURVEYOR'S CERTIFICATE

This map has been examined for conformance with the requirements of Chapter 15 of Division 3 of the Business and Professions Code this 1<sup>st</sup> day of July, 1960

A.C. KEITH County Surveyor  
By A.C. Keith

### ENGINEER'S NOTE

Bearings are based on the centerline of Arbor Drive as being N.00°03'20"E, as shown in Map Book 24, Page 75, records of Riverside County, Calif.  
Set Redwood 2"x2" painted white and tagged R.E. 862 at all Lot Corners unless otherwise noted.

RS 32/19 34224

32/19