

32/22

# IN THE CITY OF RIVERSIDE RECORD OF SURVEY

OF A PORTION OF THE N.W. 1/4 OF THE S.E. 1/4 OF SEC. 33, T2S, R5W.  
S.B.B.&M.

MAY 1960

J.F. DAVIDSON, C.E.

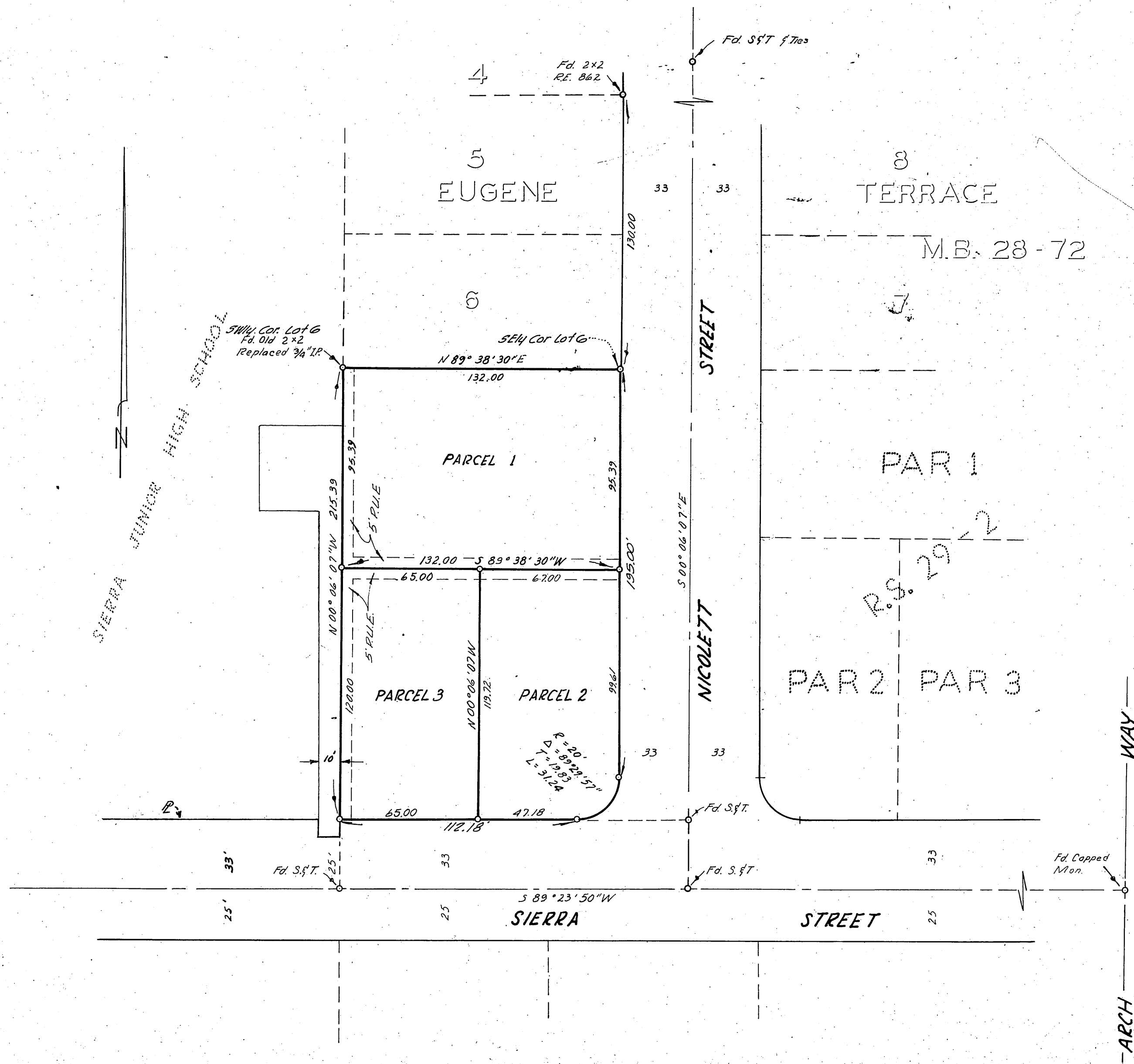
SCALE: 1" = 40'

Filed for Record at request of County Surveyor this 25 day of July, 1960 at 10:10 A.M. in Book 32 of Record of Survey of Page 22.  
Fee \$5.00 No. 65028

JACK A. ROSS County Recorder

By William D. Balogh Deputy

Made at the request of Martin J. Kaplan



### ENGINEER'S CERTIFICATE

This map correctly represents a survey made by me or under my direction in conformance with the requirements of Chapter 15 of Division 3 of the Business and Professions Code at the request of Martin J. Kaplan in May, 1960.

J. F. Davidson  
Registered Civil Engineer No. 862

### ENGINEER'S NOTE

Bearings are based on the center line of SIERRA STREET being S 89° 23' 50" W as shown on map of Eugene Terrace, Map Book 28 Page 72, Records of Riverside County, California Set 34" Iron Pipe, tagged R.E. 862, a tall points shown thus  $\circ$  unless otherwise noted.

### COUNTY SURVEYOR'S CERTIFICATE

This map has been examined for conformance with the requirements of Chapter 15 of Division 3 of the Business and Professions Code this 20 day of July, 1960.

A.C. KEITH County Surveyor

By G. C. Keith

F.B. 686-46

CITY RAS# 437

RS 32/22  
S-4225

RS 32/22