

IN THE CITY OF RIVERSIDE, CALIFORNIA

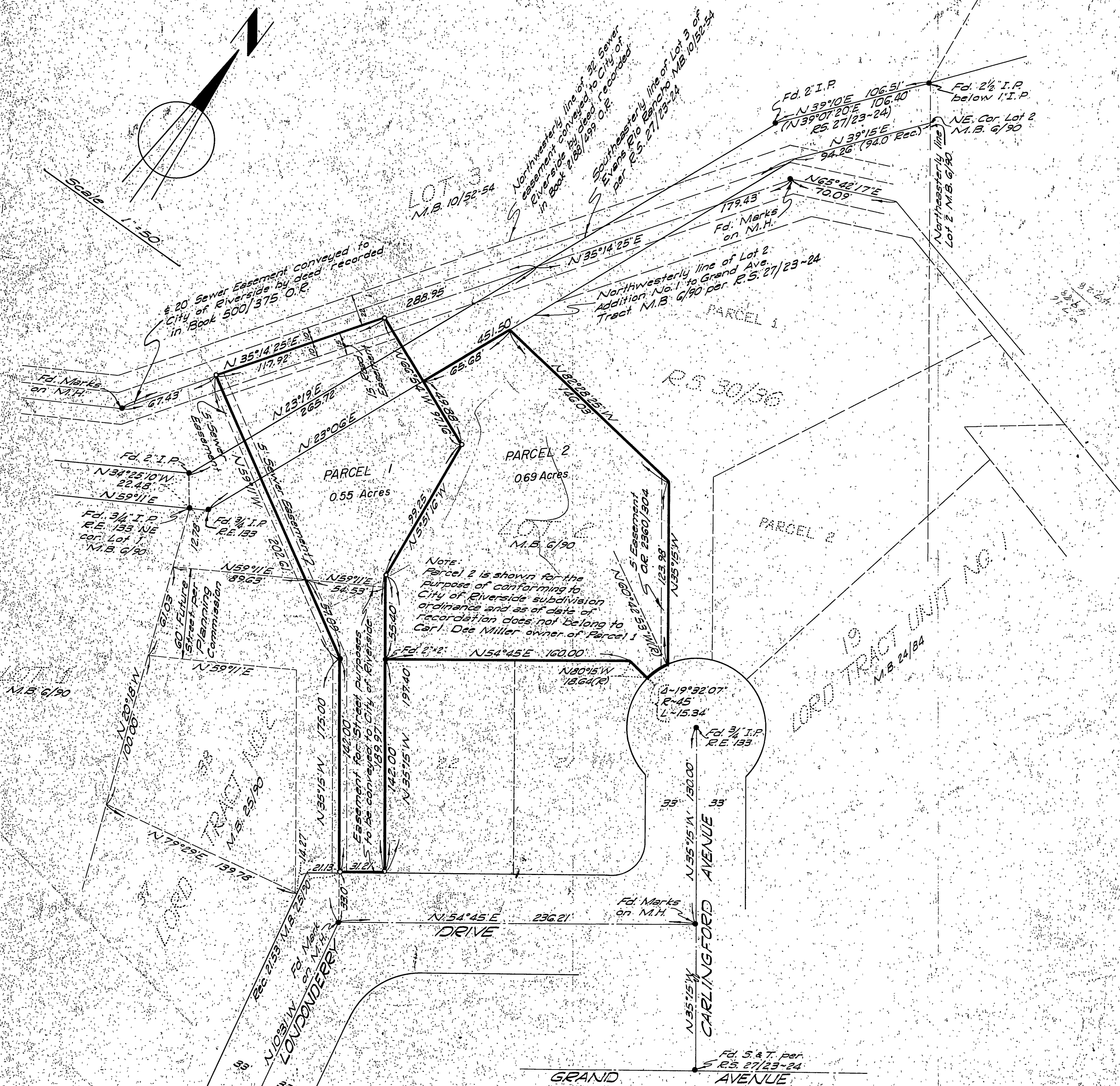
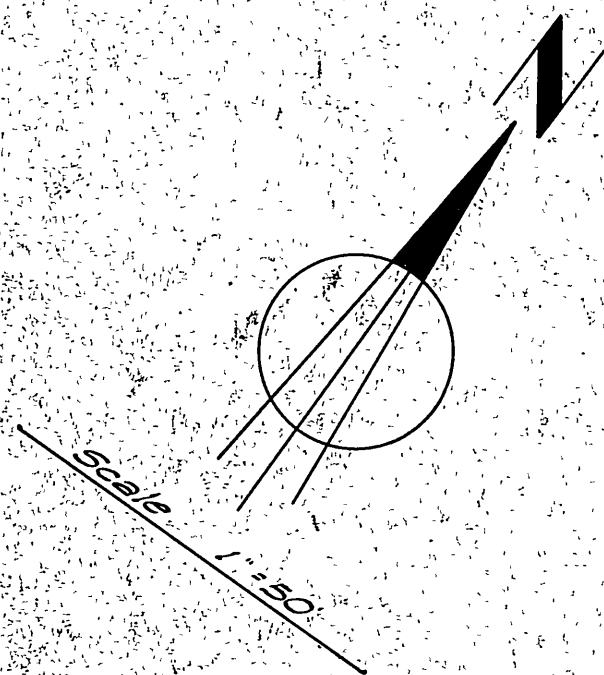
RECORD OF SURVEY

OF A PORTION OF LOT 2 OF MAP OF ADDITION NO. 1 TO GRAND AVENUE TRACT PER MAP BOOK 6, PAGE 90 AND A PORTION OF LOT 3 OF EVANS RIO RANCHO PER MAP BOOK 10 PAGES 52, 53 AND 54, RECORDS OF RIVERSIDE COUNTY, CALIFORNIA

Filed for record at request of County Surveyor this 4th day of Aug. 1960 at 11:25 P.M. in Book 32 of Records of Survey at Page 37 Fee \$ 5.00 No.

Jack A. Ross, County Recorder
By William O. Kelly Deputy

ALBERT A. WEBB ASSOCIATES
CIVIL ENGINEERS
RIVERSIDE CALIFORNIA
JANUARY 1960



This map has been examined for conformance with the requirements of Chapter 15 of Division 3 of the Business and Professions Code this 4th day of August 1960.

A.C. Keith, County Surveyor
By C.P. Worsley Deputy

This map correctly represents a survey made by me or under my direction in conformance with the requirements of Chapter 15 of Division 3 of the Business and Professions Code at the request of Carl Dee Miller in December of 1959.

Ernest N. Webb
C.E. No. 9876

ENGINEERS' NOTES:-
Basis of Bearings is the centerline of Carlingsford Avenue, taken as N 35°15' W, as same is shown by map of Loco Tract Unit No. 1 on file in Book 24 of Maps at page 84, records of Riverside County, California.

Found monuments as noted at all points shown thus: ●
Set 3/4" Iron Pipe tagged R.E. 9876 at all points shown thus: ○