

32/140

RS 32/140 S-430

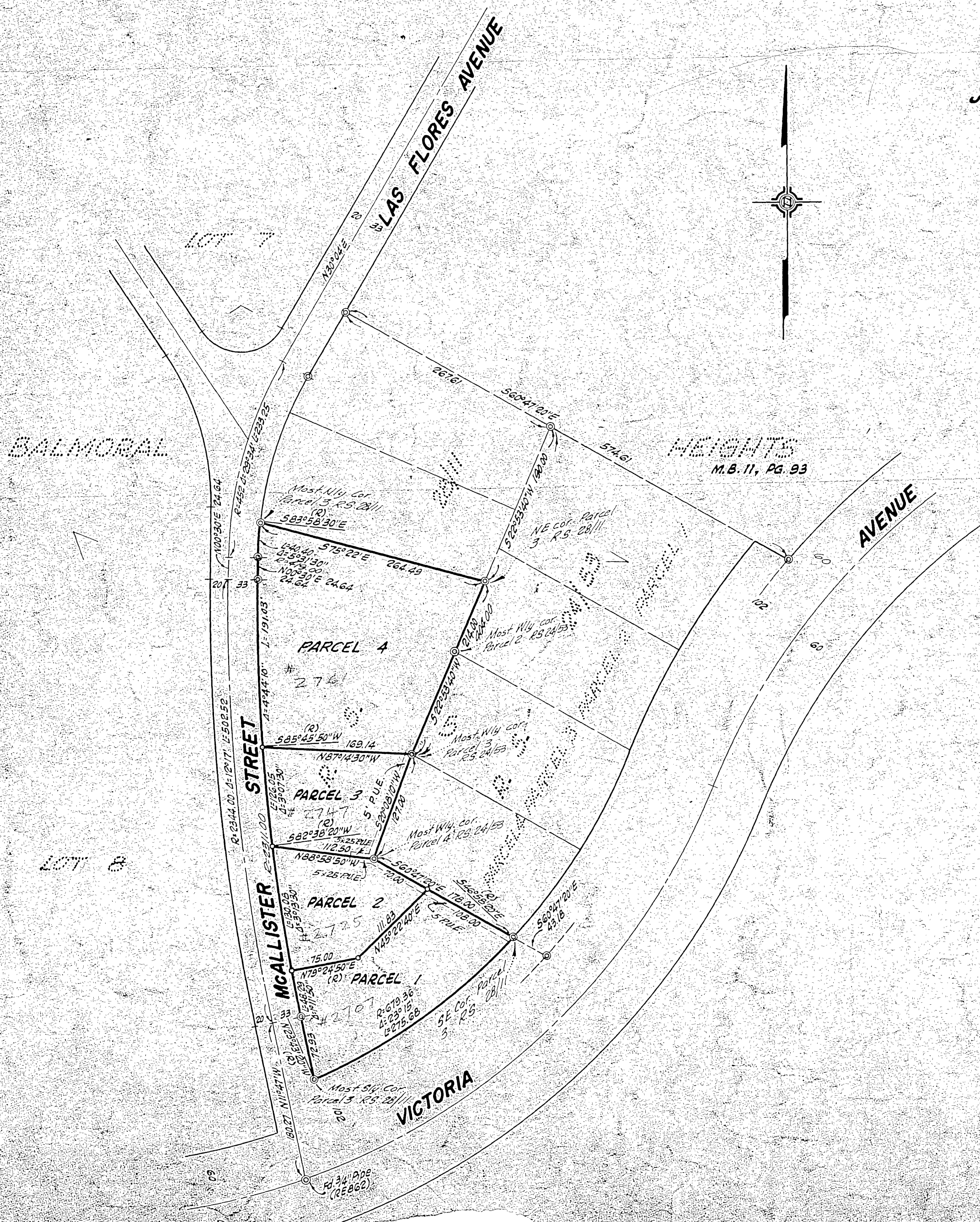
Filed for record at request of County Surveyor this 15th day of  
 August, 1960, at 11:22 A.M., in Book 32 of Record of  
 Survey of Page 44.  
 Fee \$5.00  
 No. 71897  
 JACK A. ROSS County Recorder  
 By O.A. Wheat Deputy

IN THE CITY OF RIVERSIDE

# RECORD OF SURVEY

SHOWING A SURVEY OF A PORTION OF LOT 5 OF BALMORAL HEIGHTS  
 TRACT, MAP BOOK 11, PAGE 93, RECORDS OF RIVERSIDE CO., CALIFORNIA.  
 JULY 1960  
**J. F. DAVIDSON, C. E.** SCALE 1" = 100'

Made at the request of EARLE B. SETTLEMIRE



This map correctly represents a survey made by me or under my direction  
 in conformance with the requirements of Chapter 15 of Division 3 of the  
 Business and Professions Code at the request of Earle B. Settlemire  
 in March 1958.

J. F. Davidson  
 Registered Engineer No 862

**NOTE:**

Bearings are based on the Center Line of LAS FLORES AVENUE being  
 N30°04'E as shown on map of BALMORAL HEIGHTS, M. B. 11, Pg. 93,  
 Records of Riverside County, California.

- ⊙ indicates 2"x2" Stake found unless noted otherwise.
- indicates 2"x2" Redwood Stake, painted white and tagged RE662, see

This map has been examined for conformance with the requirements  
 of Chapter 15 of Division 3 of the Business and Professions Code this  
 12th day of August, 1960.

A.C. KEITH County Surveyor

By C. E. Worsley Deputy

RS 32/140 S-430