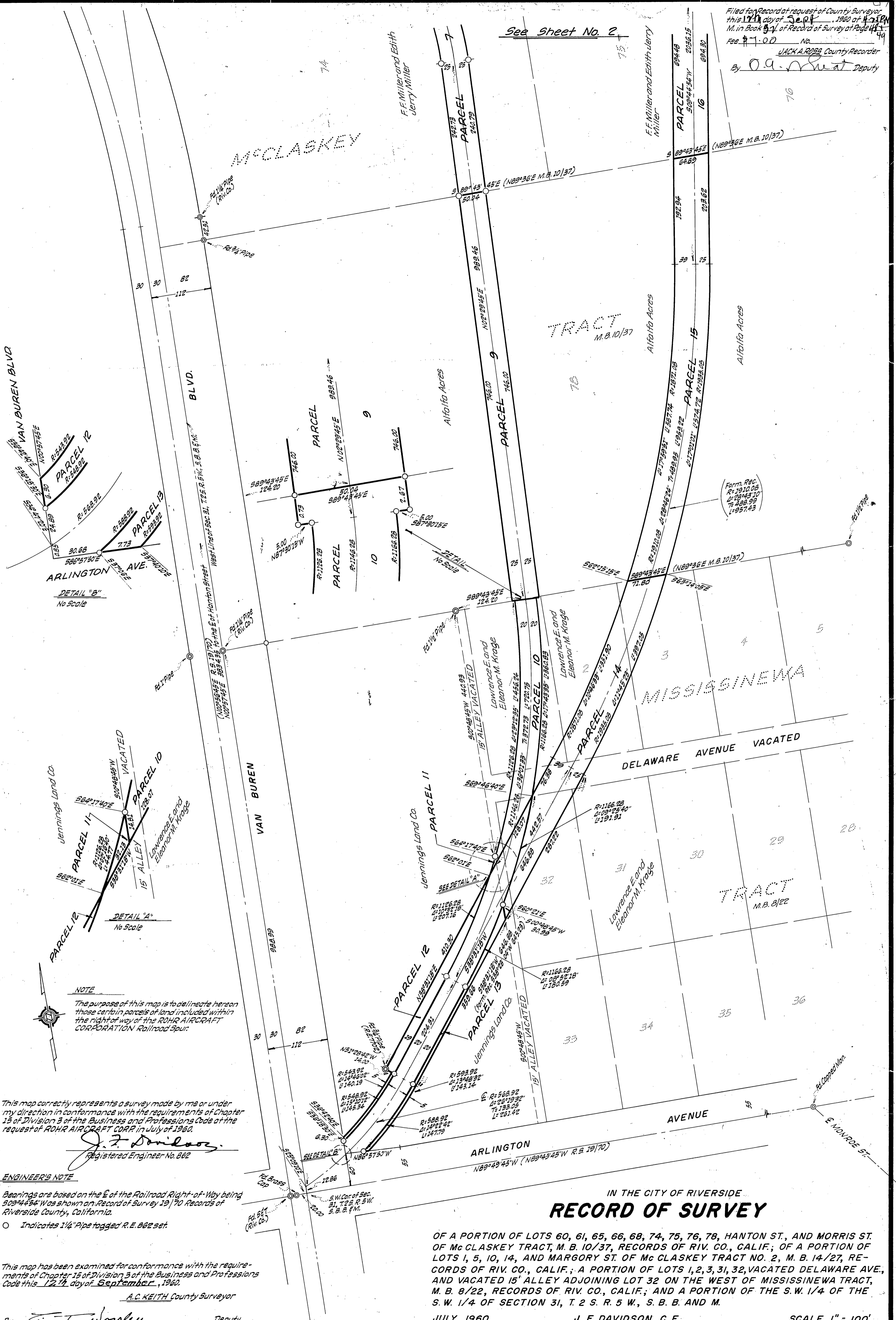


2048

Filed for Record at request of County Surveyor
this 17th day of Sept, 1960 of 4758
M. in Book 54 of Record of Survey at Page 44
Fee \$ 1.00 No. _____
JACK A. ROSS County Recorder
By O. A. Sweet Deputy

See Sheet No. 2



NOTE
The purpose of this map is to delineate hereon those certain parcels of land included within the right-of-way of the ROHR AIRCRAFT CORPORATION Railroad Spur.

This map correctly represents a survey made by me or under my direction in conformance with the requirements of Chapter 15 of Division 3 of the Business and Professions Code at the request of ROHR AIRCRAFT CORP in July of 1960.
J. F. Davidson
Registered Engineer No. 662

ENGINEER'S NOTE
Bearings are based on the E of the Railroad Right-of-Way being $509^{\circ}44'54''$ W as shown on Record of Survey 19170 Records of Riverside County, California.
○ Indicates 1/4" Pipe tagged R.E. 662 set.

This map has been examined for conformance with the requirements of Chapter 15 of Division 3 of the Business and Professions Code this 12th day of September, 1960.
A.C. KEITH County Surveyor

By E. T. Worsley Deputy

IN THE CITY OF RIVERSIDE
RECORD OF SURVEY

OF A PORTION OF LOTS 60, 61, 65, 66, 68, 74, 75, 76, 78, HANTON ST., AND MORRIS ST. OF Mc CLASKEY TRACT, M. B. 10/37, RECORDS OF RIV. CO., CALIF.; OF A PORTION OF LOTS 1, 5, 10, 14, AND MARGORY ST. OF Mc CLASKEY TRACT NO. 2, M. B. 14/27, RECORDS OF RIV. CO., CALIF.; A PORTION OF LOTS 1, 2, 3, 31, 32, VACATED DELAWARE AVE., AND VACATED 15' ALLEY ADJOINING LOT 32 ON THE WEST OF MISSISSINEWA TRACT, M. B. 8/22, RECORDS OF RIV. CO., CALIF.; AND A PORTION OF THE S.W. 1/4 OF THE S.W. 1/4 OF SECTION 31, T 2 S. R 5 W., S. B. B. AND M.

JULY 1960 J. F. DAVIDSON, C. E. SCALE 1" = 100'