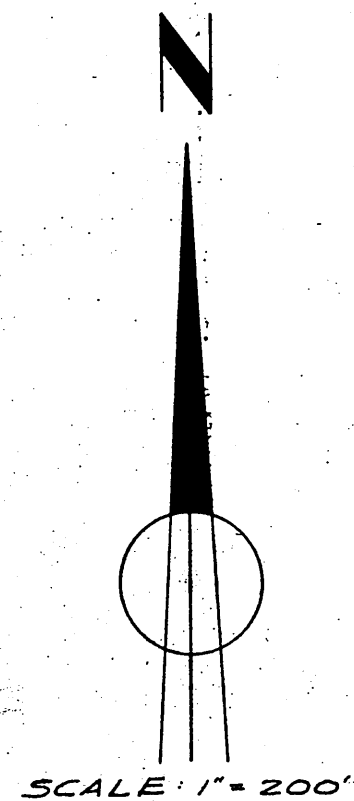


IN THE COUNTY OF RIVERSIDE

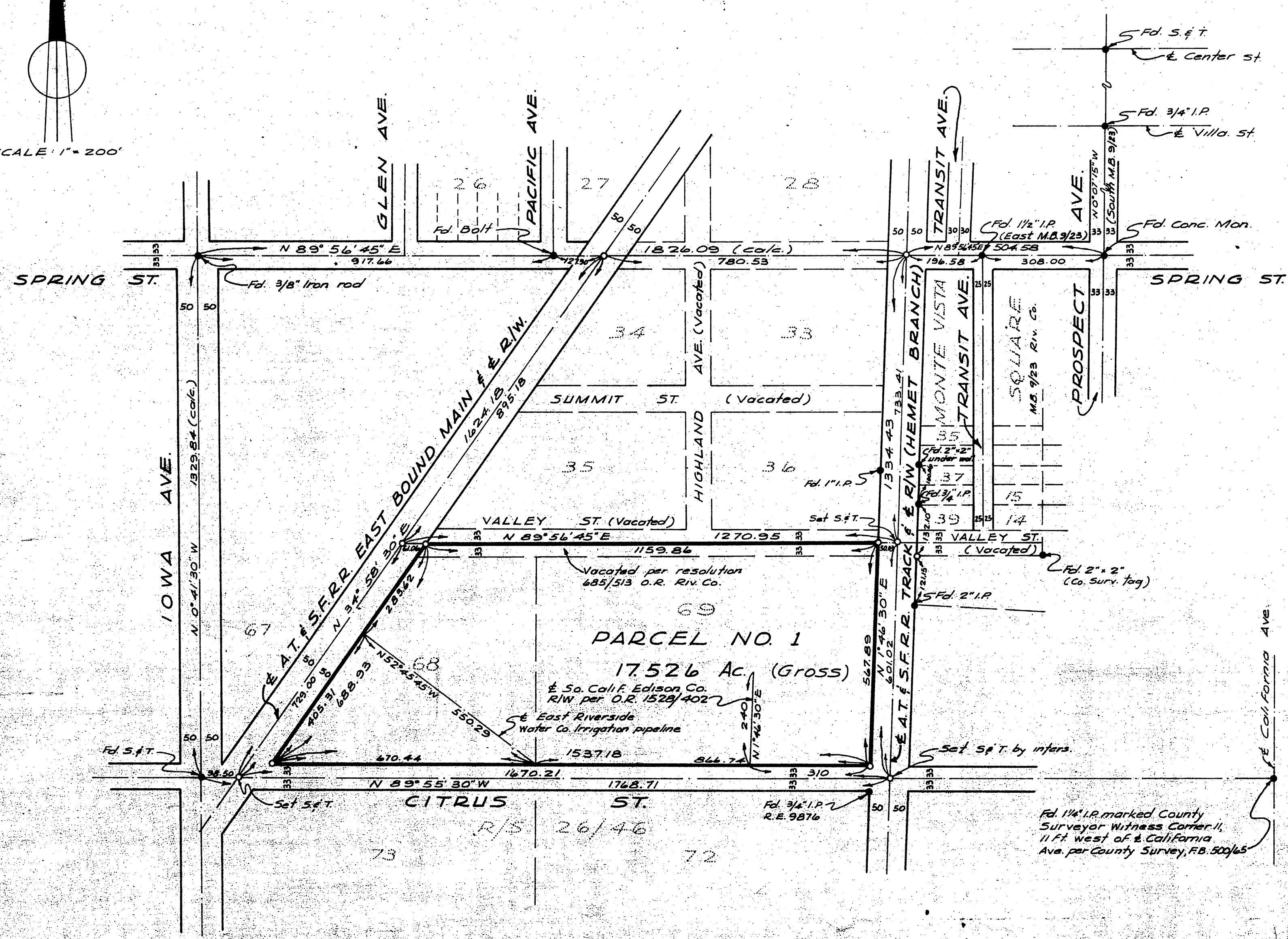
RECORD OF SURVEY

OF LOTS 68 & 69 OF EAST RIVERSIDE, PER MAP BOOK 7, PAGE 33, SAN BERNARDINO COUNTY RECORDS, AND THE SOUTHERLY ONE-HALF OF VALLEY STREET VACATED ADJACENT TO SAID LOTS 68 & 69. BEING A PORTION OF SECTION 7, T.2S., R.4W., S.B.B. & M.

Filed for Record at request of County Surveyor this 13th day of October, 1960, at 2:50 P.M. in Book 32 of Record of Survey at Page 72
Fee \$ 5.00 No. _____
JACK A. ROSS County Recorder
By O.A. West Deputy



SCALE: 1" = 200'



2BY2
ALBERT A. WEBB ASSOCIATES
CIVIL ENGINEERS
SEPTEMBER, 1960.

ENGINEER'S CERTIFICATE

This map correctly represents a survey made by me or under my direction in conformance with the requirements of Chapter 15 of Division 3 of the Business and Profession Code at the request of LILY-TULIP CUP CORPORATION in September, 1960.
Ernest N. Webb
Registered Civil Engineer No 9876

ENGINEER'S NOTE:

1. Basis of Bearings is the center-line of Citrus Street taken as N 89° 55' 30" W as same is shown by map on file in Book 26 of Records of Survey, Page 46, Riverside County Records.
2. Found monuments as noted at all points shown thus ●.
3. Set 3/4" I.P. tagged R.E. 9876 at all points shown thus ○, unless otherwise noted.

COUNTY SURVEYOR'S CERTIFICATE

This map has been examined for conformance with the requirements of Chapter 15 of Division 3 of the Business and Profession Code this 13th day of October
A.C. KEITH County Surveyor
By C.T. Worsley Deputy

RS 32/72 S-25