

82/74

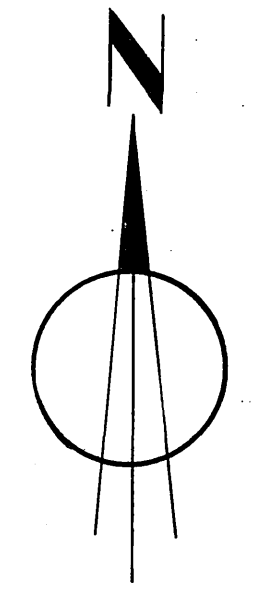
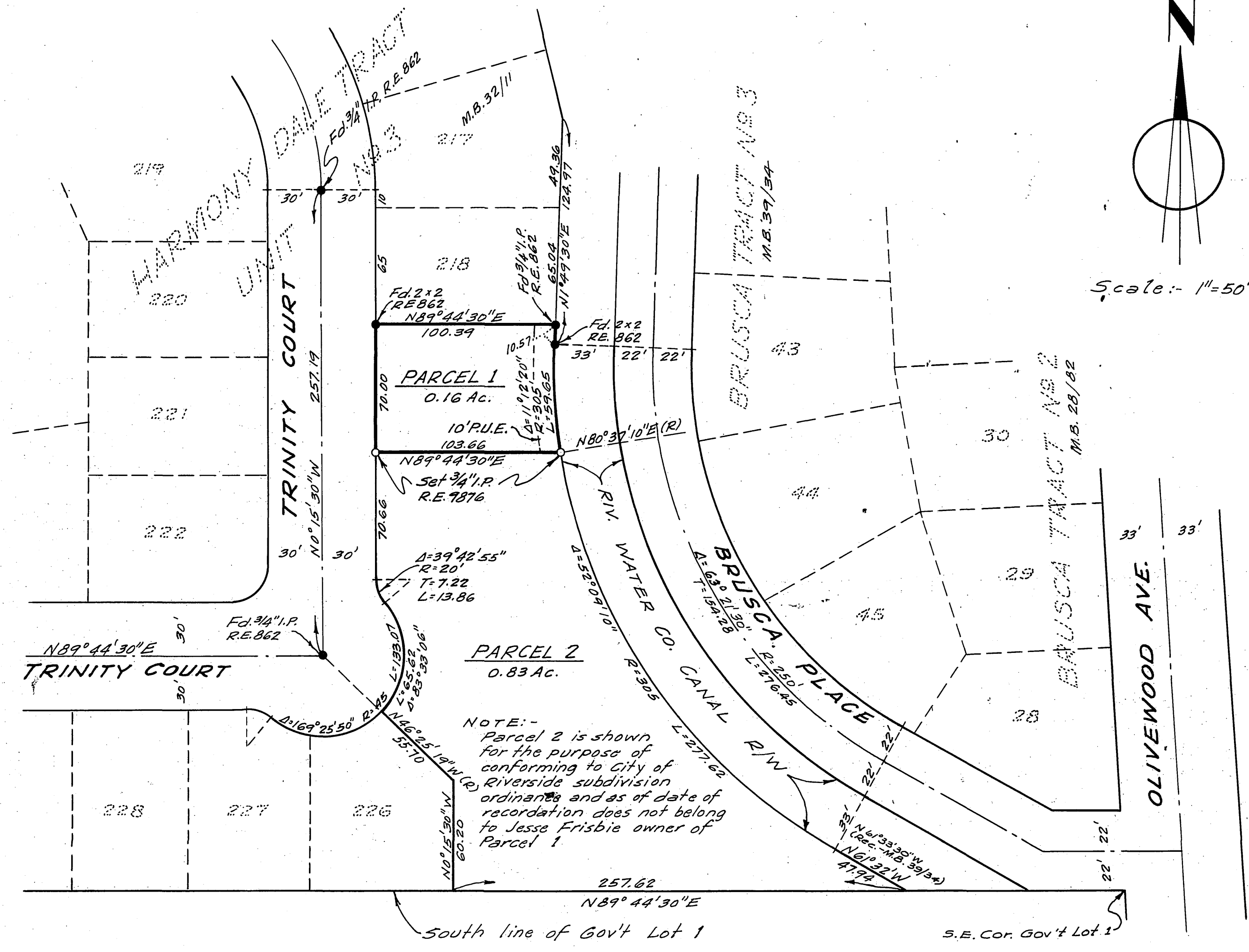
IN THE CITY OF RIVERSIDE

RECORD OF SURVEY

OF A PORTION OF GOVERNMENT LOT 1, IN SECTION 34, T.2S., R.5W., S.B.B. & M.

Filed for Record at request of County Surveyor this 13th day of October, 1960 at 2:00 P.M. in Book 32 of Record of Survey at Page 74.
Fee \$5.00 No. 88765
JACK A. ROSS County Recorder
By O. A. West Deputy

BY
ALBERT A. WEBB ASSOCIATES
CIVIL ENGINEERS
September 1960



Scale: 1" = 50'

ENGINEER'S CERTIFICATE

This map correctly represents a survey made by me or under my direction in conformance with the requirements of Chapter 15 of Division 3 of the Business and Profession Code at the request of JESSE FRISBIE in September, 1960.
Ernest H. Cable
Registered Civil Engineer No 9876

ENGINEER'S NOTE:

Basis of Bearings is the \pm of TRINITY COURT taken as $N0^{\circ}15'30''W$ as same is shown by map of HARMONY DALE TRACT No. 3 on file in Book 32 of Maps at page 11 thereof, Records of Riverside Co., Calif.
Found monuments as noted at all points shown thus \bullet
set $\frac{3}{4}$ " I.P. tagged R.E. 9876 at all points shown thus \circ

COUNTY SURVEYOR'S CERTIFICATE

This map has been examined for conformance with the requirements of Chapter 15 of Division 3 of the Business and Profession Code this 13th day of October.
A.C. KEITH County Surveyor
By C. T. Worsley Deputy