

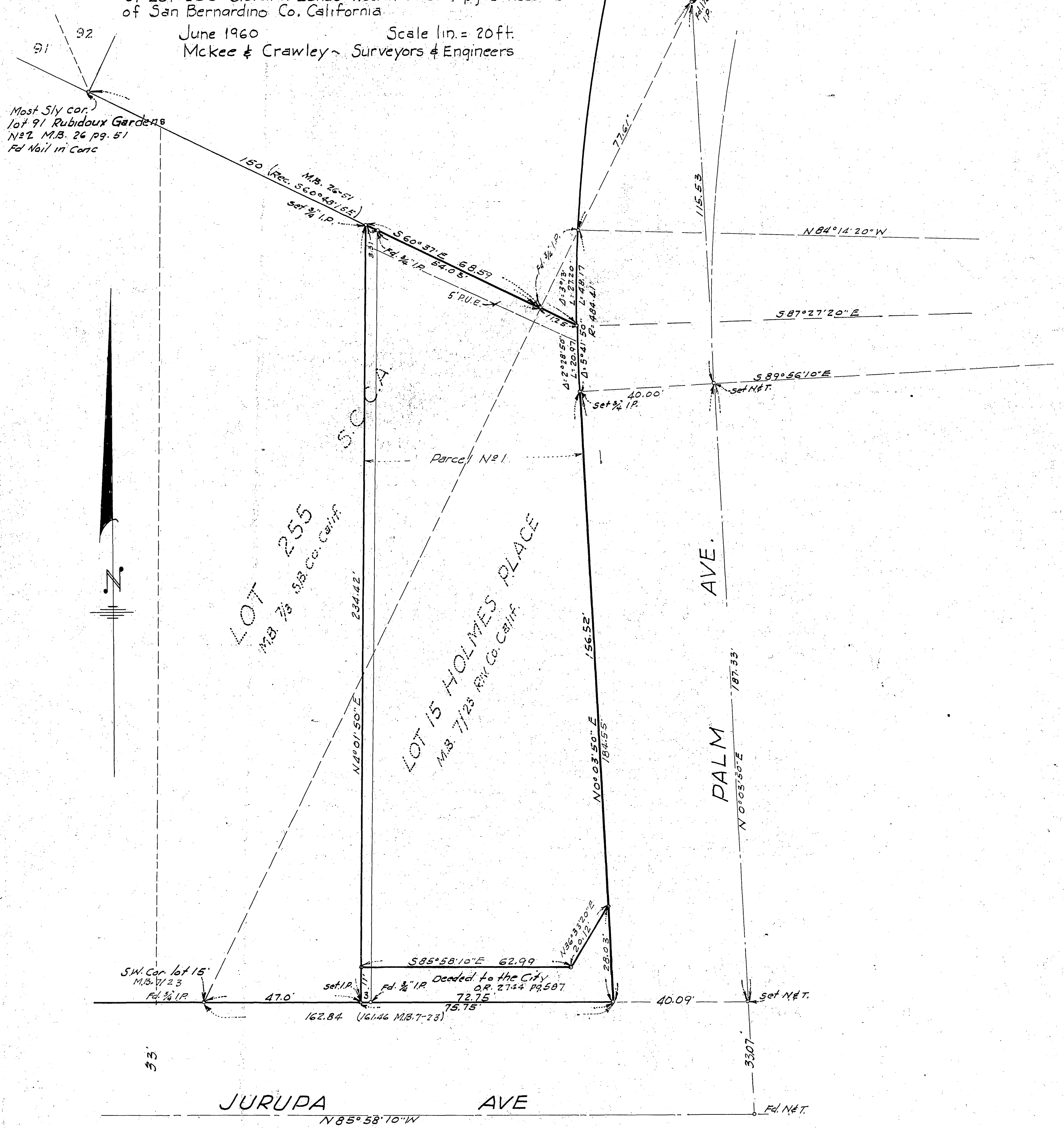
IN THE CITY OF RIVERSIDE

RECORD OF SURVEY

Being a Survey of a portion of Lot 15 of Holmes Place Rec. in M.B. 7 pg. 23 Records of Riverside Co Calif. and a portion of Lot 255 S.C.C.A. Lands Rec. in M.B. 7 pg 3 Records of San Bernardino Co. California

June 1960 Scale 1 in. = 20 ft.
McKee & Crawley - Surveyors & Engineers

Filed for record at request of County Surveyor this 19 day of Oct. 1960 at 10:10 A.M. in Book 32 of Record of Survey at Page 96
Fee \$5.00
Jack A. Ross
County Recorder
William D. Balogh
Deputy



Most Sly cor. lot 91 Rubidoux Gardens No. 2 M.B. 26 pg. 51 Fd Nail in Conc

S.W. Cor. lot 15 M.B. 7/23 Fd 3/4 I.P.

Decided to the City O.R. 2744 pg. 587 Fd. 3/4 I.P.

This map correctly represents a survey made by me or under my direction in conformance with the requirements of Chapter 15 of Division 3 of the business and professions code at the request of Sidney Gray In June 1960

Dorothy McKee
(Signed and Sealed)
No. L.S. 1825

Note: Bearings are based on the E of Palm Ave Shown as N 0° 03' 50" E on Beverly Homes M.B. 31 pg. 647 Riv. Co. Calif. Monuments found as shown, Corners set as shown and tagged L.S. 1825

This map has been examined for conformance with the requirements of Chapter 15 of Division 3 of the Business and Professions Code this 18th day of October 1960

A.C. Keith
County Surveyor
By *C.T. Worsley*
Deputy