

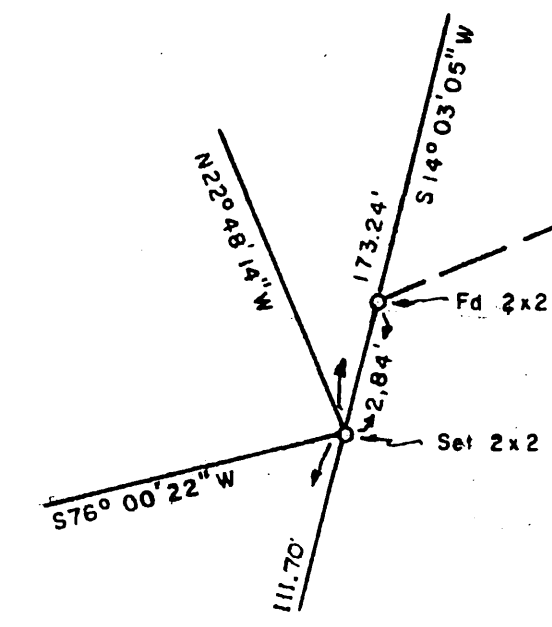
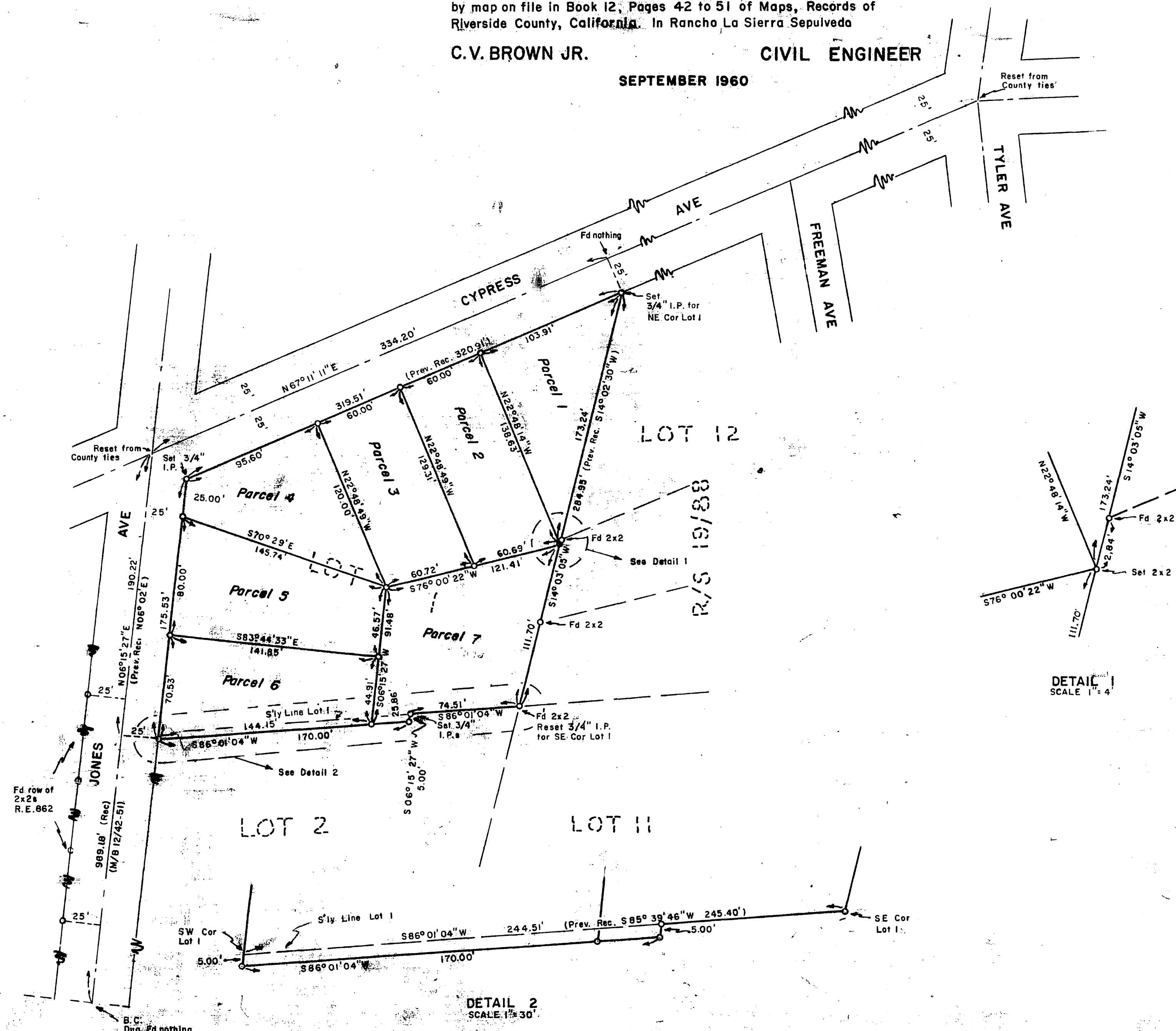
IN THE COUNTY OF RIVERSIDE
RECORD OF SURVEY

Of Lot 1 and a portion of Lot 2 in Block 4, LA GRANADA as shown
 by map on file in Book 12, Pages 42 to 51 of Maps, Records of
 Riverside County, California. In Rancho La Sierra Sepulveda

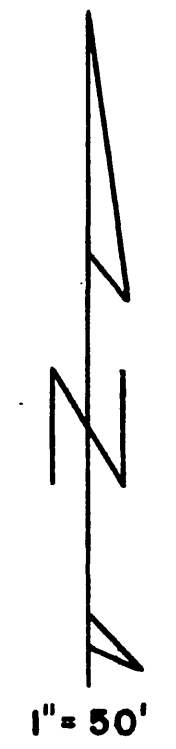
C.V. BROWN JR. CIVIL ENGINEER

SEPTEMBER 1960

Filed for record at request of County Surveyor this 14th day of December
 1960 at 10:10 A.M. in Book 22 of Record of Survey at Page 98
 Fee \$5.00
 By Jack A. Ross County Recorder
 No. 105538 By O.A. Great Deputy



DETAIL 2
 SCALE 1" = 30'



Basis of Bearings, Centerline of CYPRESS AVE taken as
 N67°11'11"E from Map of LA GRANADA, M/B 12/42 to 51 Riv. Co.
 Set 2x2 Redwood stakes at all points marked thus unless
 otherwise noted
 This map correctly represents a survey made by me or under my direction in conformance with
 the requirements of Chapter 15 of Division 3 of the business and professions code at the request
 of Carol Mahar & Israel Arriaga in September 1960

C.V. Brown Jr.
 (Signed and Sealed)
 No. 7702

This map has been examined for conformance with the requirements of Chapter 15 of Division 3
 of the Business and Professions Code this 13th day of December 1960

A.C. Keith
 County Surveyor
 By *C.T. Wankly*
 Deputy

R.S. 32198

R.S. 32198

R.S. 32198