

32/100

IN THE CITY OF RIVERSIDE

RECORD OF SURVEY

OF A PORTION OF LOTS 48 AND 49 OF BLK.
12 OF VILLAGE OF ARLINGTON, M.B. 1-62, REC.
OF SAN BERNARDINO COUNTY, CALIFORNIA,
IN T. 3 S. R. 5 W., S. B. B. AND M.

MAY 1960

J. F. DAVIDSON, C. E.

SCALE 1"=100'

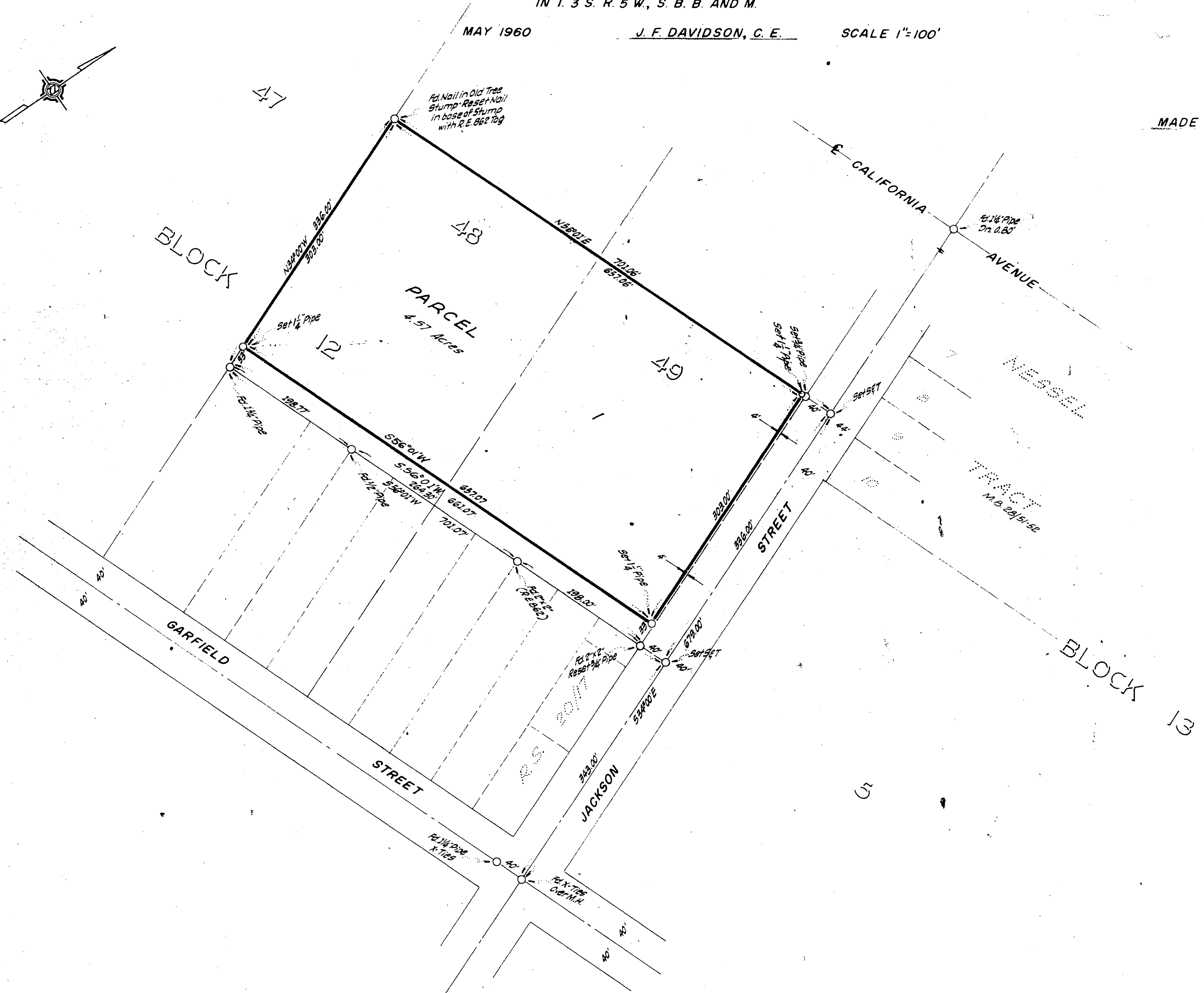
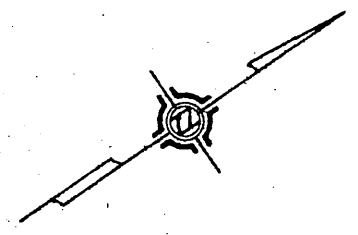
Filed for Record at request of County Surveyor this 28th day of
December, 1960, of Book M. in Book 3
of Record of Survey of Page 100

Fee \$5.00 No. 100210

JACK A. ROSS County Recorder

By C. A. Mead Deputy

MADE AT REQUEST OF ST. MICHAEL'S EPISCOPAL CHURCH



ENGINEER'S CERTIFICATE

This map correctly represents a survey made by me or under my direction in conformance with the requirements of Chapter 15 of Division 3 of the Business and Professions Code at the request of St. Michael's Episcopal Church in November, 1960.

J. F. Davidson
Registered Civil Engineer No. 262

ENGINEER'S NOTE

Bearings are based on the center line of JACKSON STREET being $534^{\circ}00'E$ as shown on map of "NESSEL TRACT" M.B. 28/51-52, Records of Riverside County, California.

COUNTY SURVEYOR'S CERTIFICATE

This map has been examined for conformance with the requirements of Chapter 15 of Division 3 of the Business and Professions Code this 27th day of December, 1960.

A. C. KEITH County Surveyor

By E. T. Worsley Deputy

F.B. 6226/13, 73

RS 32/100