

IN THE CITY OF RIVERSIDE

RECORD OF SURVEY

OF A PORTION OF LOTS 57, 58, 59, 60, 61, 62, 63, 64, 65, 66, AND HANTON STREET OF McCLASKEY TRACT, M. B. 10/37, RECORDS OF RIVERSIDE CO., CALIFORNIA.

Filed for Record at request of County Surveyor this 28th day of Dec. 1960, at 1:50 P.M. in Book 33 of Record of Survey of Page 343.

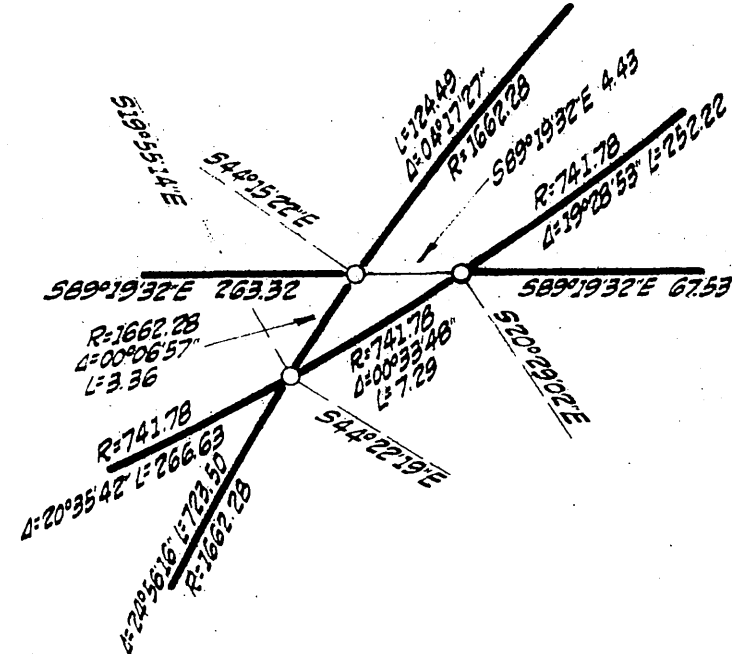
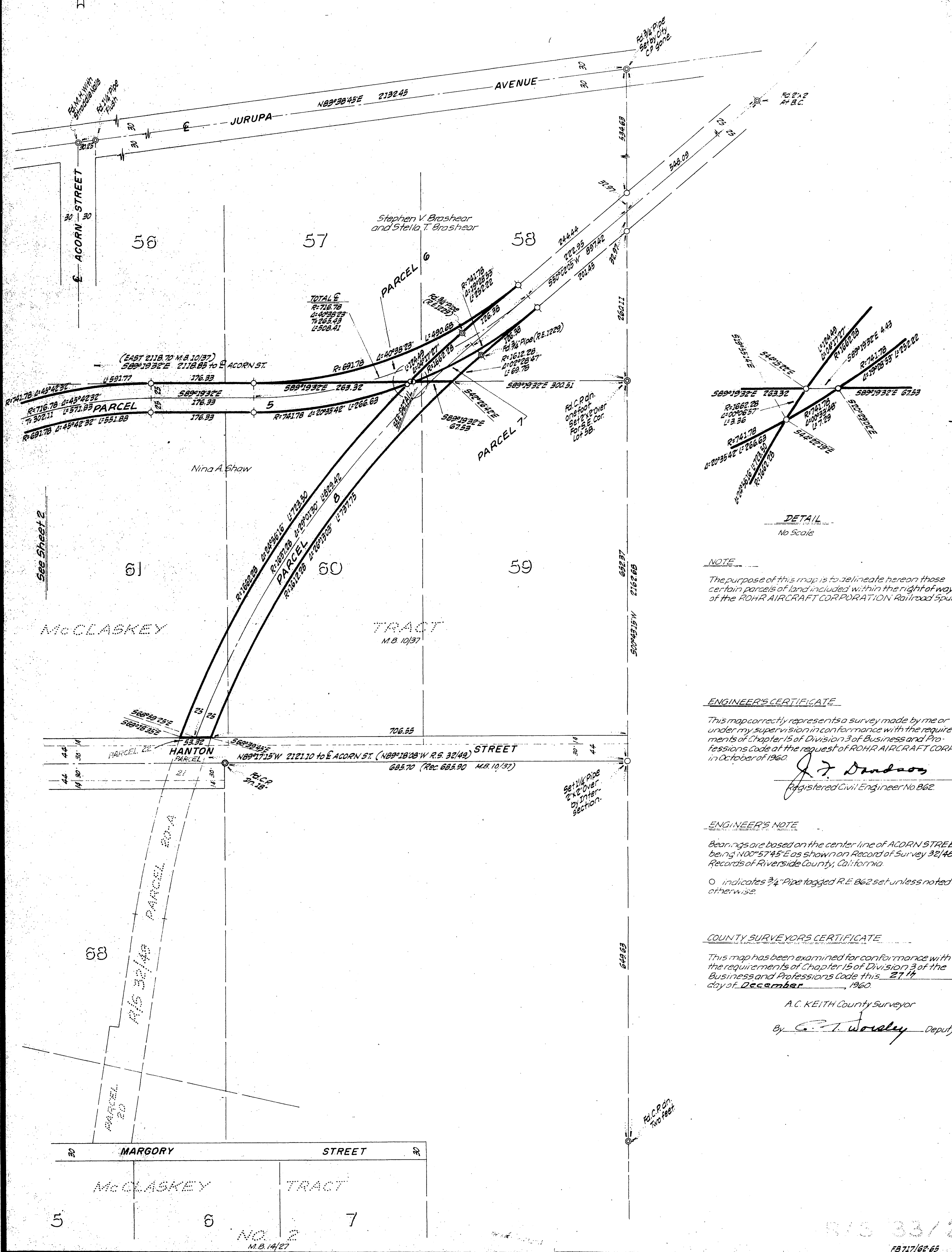
Fee No. JACK A. ROSS Co. Recorder

By O. A. Wheat Deputy

OCTOBER 1960

J. F. DAVIDSON, C. E.

SCALE 1" = 100'



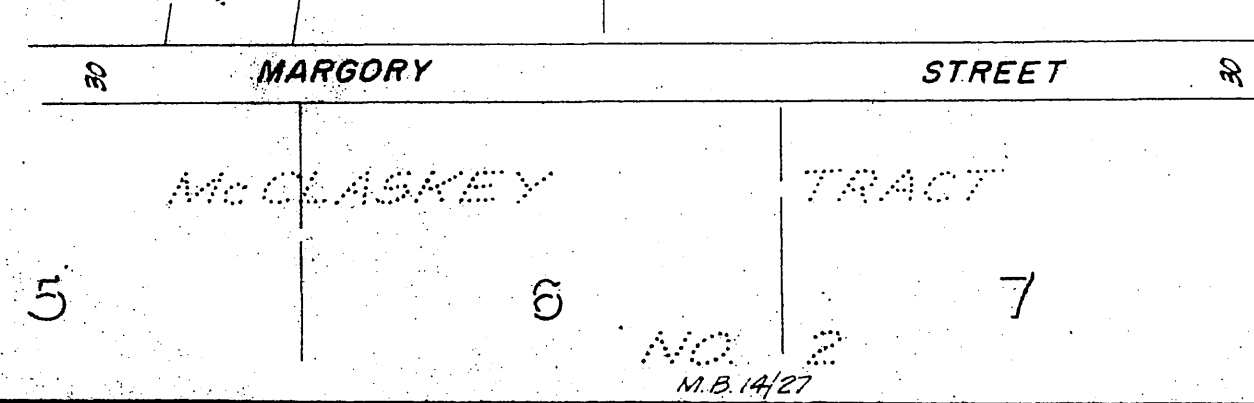
DETAIL
No Scale

NOTE
The purpose of this map is to delineate hereon those certain parcels of land included within the right-of-way of the ROHR AIRCRAFT CORPORATION Railroad Spur.

ENGINEER'S CERTIFICATE
This map correctly represents a survey made by me or under my supervision in conformance with the requirements of Chapter 15 of Division 3 of Business and Professions Code at the request of ROHR AIRCRAFT CORP in October of 1960.
J. F. Davidson
Registered Civil Engineer No. B62.

ENGINEER'S NOTE
Bearings are based on the center line of ACORN STREET being N00°57'45"E as shown on Record of Survey 32148 & 49 Records of Riverside County, California.
O indicates 3/4" Pipe tagged R.E. B62 set unless noted otherwise.

COUNTY SURVEYORS CERTIFICATE
This map has been examined for conformance with the requirements of Chapter 15 of Division 3 of the Business and Professions Code this 27th day of December 1960.
A.C. KEITH County Surveyor
By C. T. Wardley Deputy



IN THE CITY OF RIVERSIDE

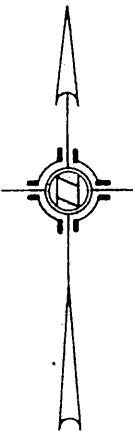
RECORD OF SURVEY

OF A PORTION OF LOTS 57, 58, 59, 60, 61, 62, 63, 64, 65, 66, AND HANTON STREET OF McCLASKEY TRACT, M. B. 10/37, RECORDS OF RIVERSIDE CO., CALIFORNIA.

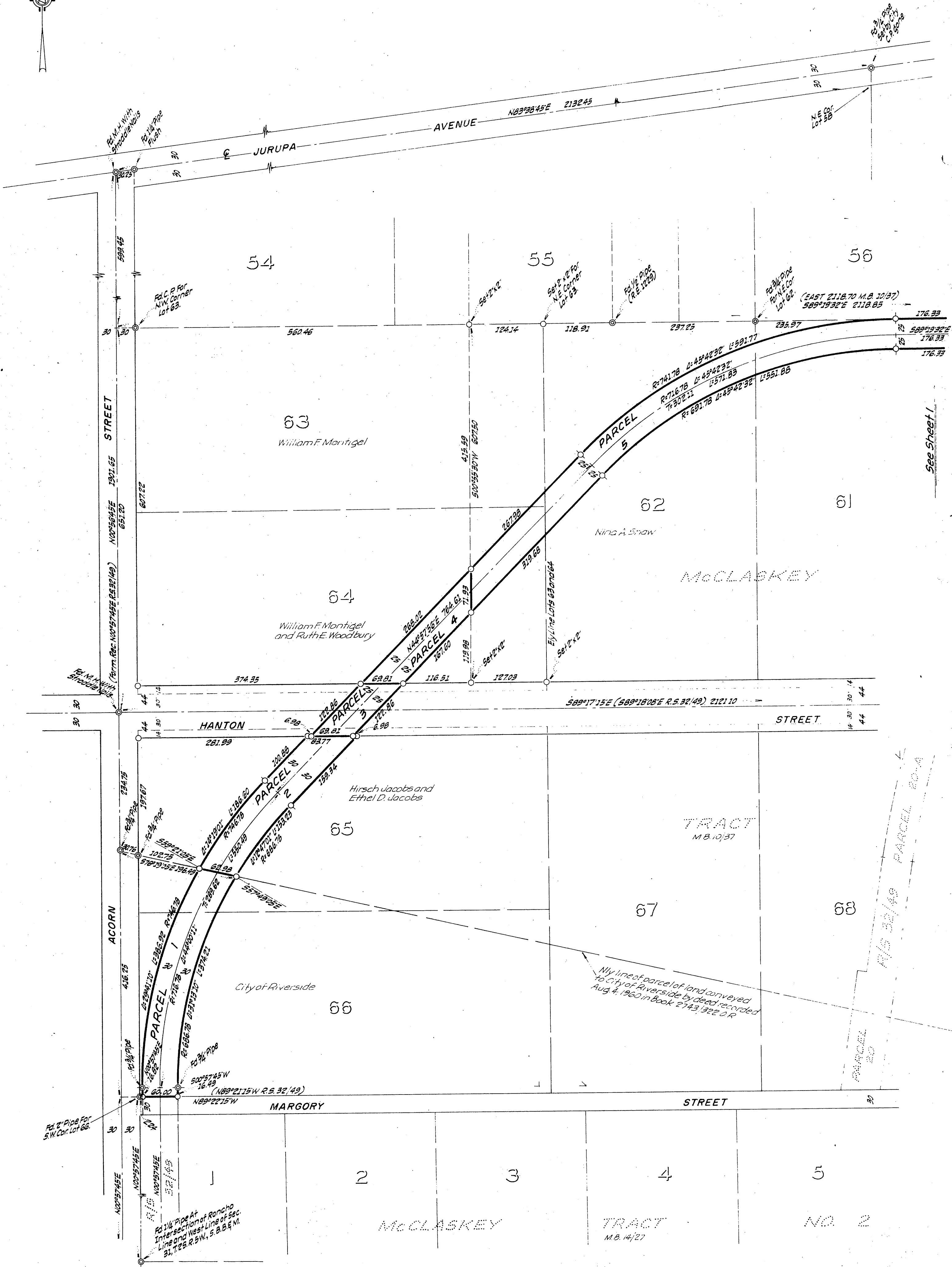
OCTOBER 1960

J. F. DAVIDSON, C. E.

SCALE 1"=100'



RS 33/3



See Sheet 1