

IN COUNTY OF RIVERSIDE RECORD OF SURVEY

OF A PORTION NE 1/4 OF NE 1/4 OF SECTION 31 T. 2 S.,
R. 4 W., S.B.B. & M IN THE COUNTY OF RIVERSIDE STATE
OF CALIFORNIA.

DECEMBER, 1960

FILED

DEC 29 1960

Jack A. Ross
William H. Dalrymple

109606
Fees \$ 3.00
At 11:30 A.M.

NOTES

- — Indicates monuments found as noted.
- — Indicates 1/2" dia x 24" long Iron pipe set and tagged RE 8613 unless otherwise noted.

Basis of Bearings is the North line of N.E. 1/4 of section 31, T. 2 S., R. 4 W., S.B.B. & M per R.S. 11/41 V.L. N 89° 40' 00" E.

This map correctly represents a survey made by me or under my direction in conformance with the requirements of Chapter 15 of Division 3 of the Business and Professions Code at the request of U.S. Forest Service in November 1960

Thomas A. Bronte
R.C.E. No. 8613

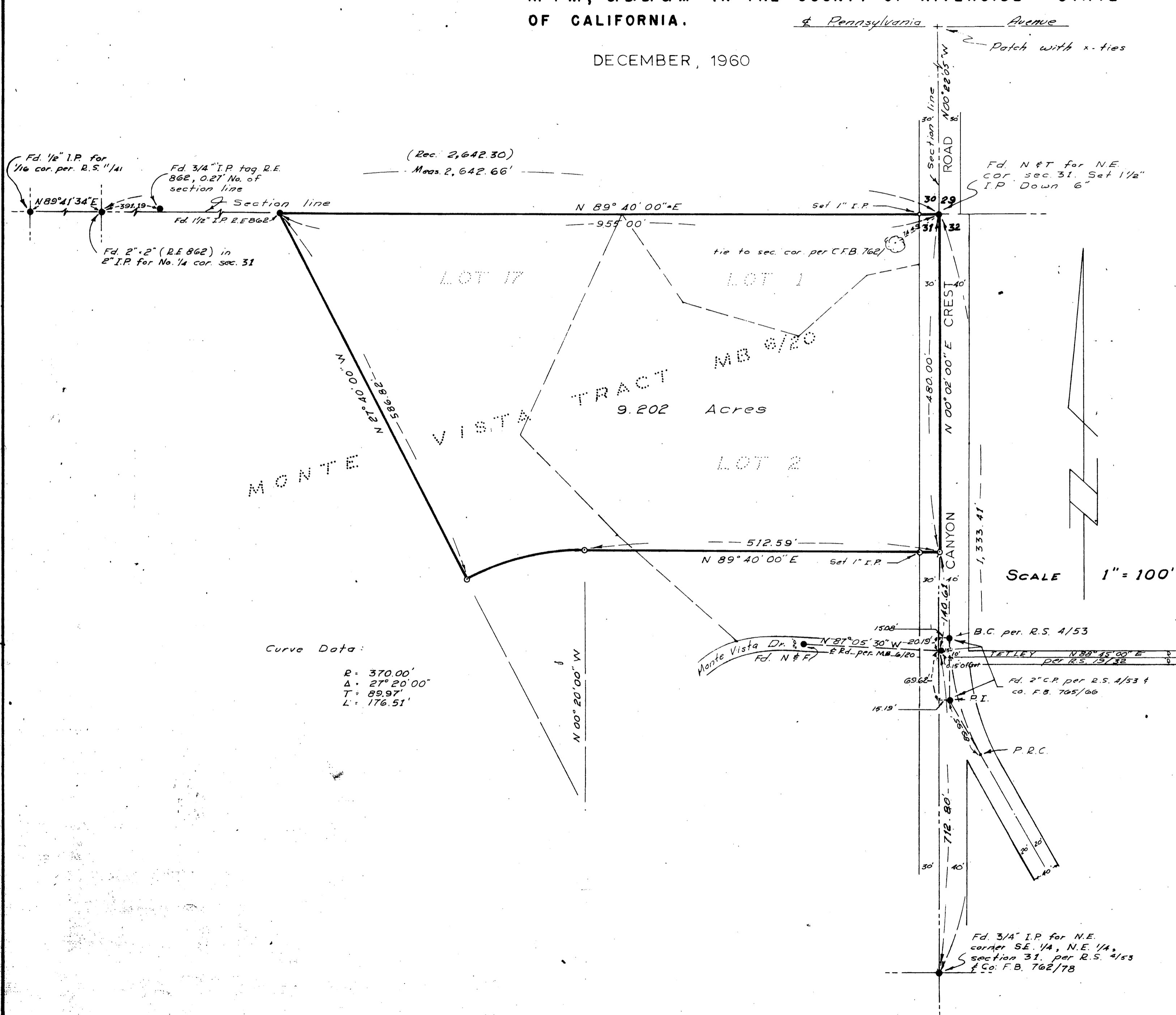
This map has been examined for conformance with the requirements of Chapter 15 of Division 3 of the Business and Professions Code this 29th day of December 1960

A.C. KEITH
County Surveyor
By G. T. Wansley
Deputy

Filed for record at the request of County Surveyor this _____ day of _____ 19__ at _____ M. in book _____ of Record of Survey at page _____

Fee _____
No. _____

County Recorder
By _____
Deputy



Curve Data:
R = 370.00'
Δ = 27° 20' 00"
T = 89.97'
L = 176.51'

SCALE 1" = 100'