

IN COUNTY OF RIVERSIDE

# RECORD OF SURVEY

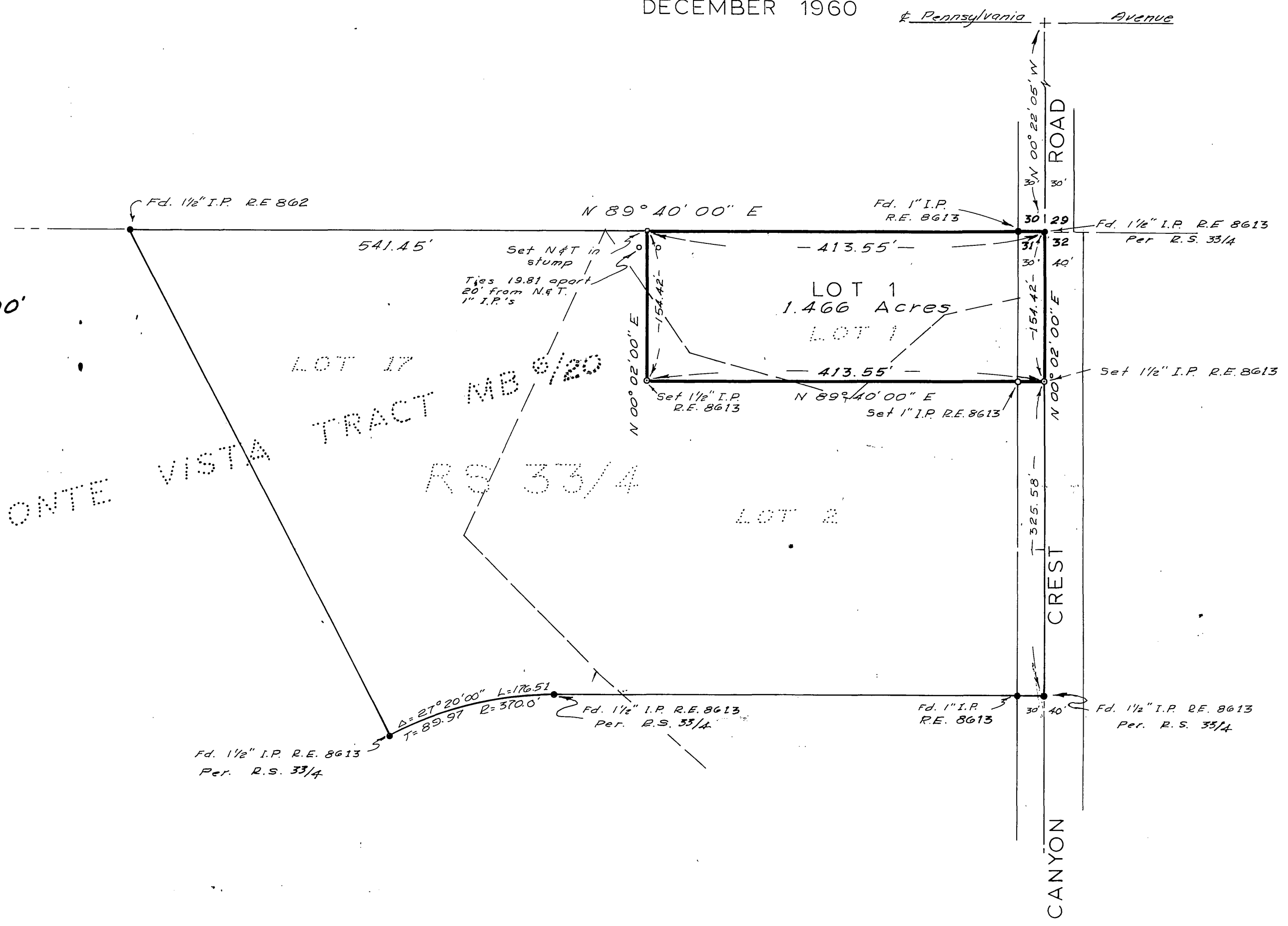
OF A PORTION N.E. 1/4 OF N.E. 1/4 OF SECTION 31 T.2 S.  
R. 4 W., S.B.B. & M. IN THE COUNTY OF RIVERSIDE. STATE  
OF CALIFORNIA.

DECEMBER 1960

*Paensylvania* Avenue

SCALE 1" = 100'

MONTE VISTA TRACT MB 6/20  
RS 33/4



This map correctly represents a survey made by me or under my direction in conformance with the requirements of Chapter 15 of Division 3 of the Business and Professions Code at the request of the U.S. Forest Service in November 1960.

*Norman A. Nestor*  
R.C.E. No. 8613

This map has been examined for conformance with the requirements of Chapter 15, of Division 3 of the Business and Professions Code this 9th day of January 1961

A.C. Keith  
County Surveyor  
By *G. T. Worley*  
Deputy

Filed for record at the request of the County Surveyor this 9 day of January 1961 at 1:30 P.M. in book 33 of record of survey at page 8.  
Fee \$ 5.00  
No. 1803

Jack A. Ross  
County Recorder  
By *William K. Balogh*  
Deputy

### NOTES

- — Indicates monuments found as noted.
  - — Indicates 1/2" iron pipe set and tagged R.E. 8613
  - — Indicates 1" iron pipe set and tagged R.E. 8613
- Basis of Bearings is the North line of N.E. 1/4 of section 31, T.2 S., R.4 W., S.B.B. & M. per R.S. 11/41  
N 89° 40' 00" E