

IN COUNTY OF RIVERSIDE

RECORD OF SURVEY

OF A PORTION N.E. 1/4 OF N.E. 1/4 OF SECTION 31 T. 2 S.,
 R. 4 W., S.B.B. & M. IN THE COUNTY OF RIVERSIDE, STATE
 OF CALIFORNIA.

DECEMBER, 1960

This map correctly represents a survey made
 by me or under my direction in conformance with
 the requirements of Chapter 15 of Division 3 of
 the Business and Professions Code at the request
 of the U.S. Forest Service in November 1960.

Norman A. Keith
 R.C.E. No. 8613

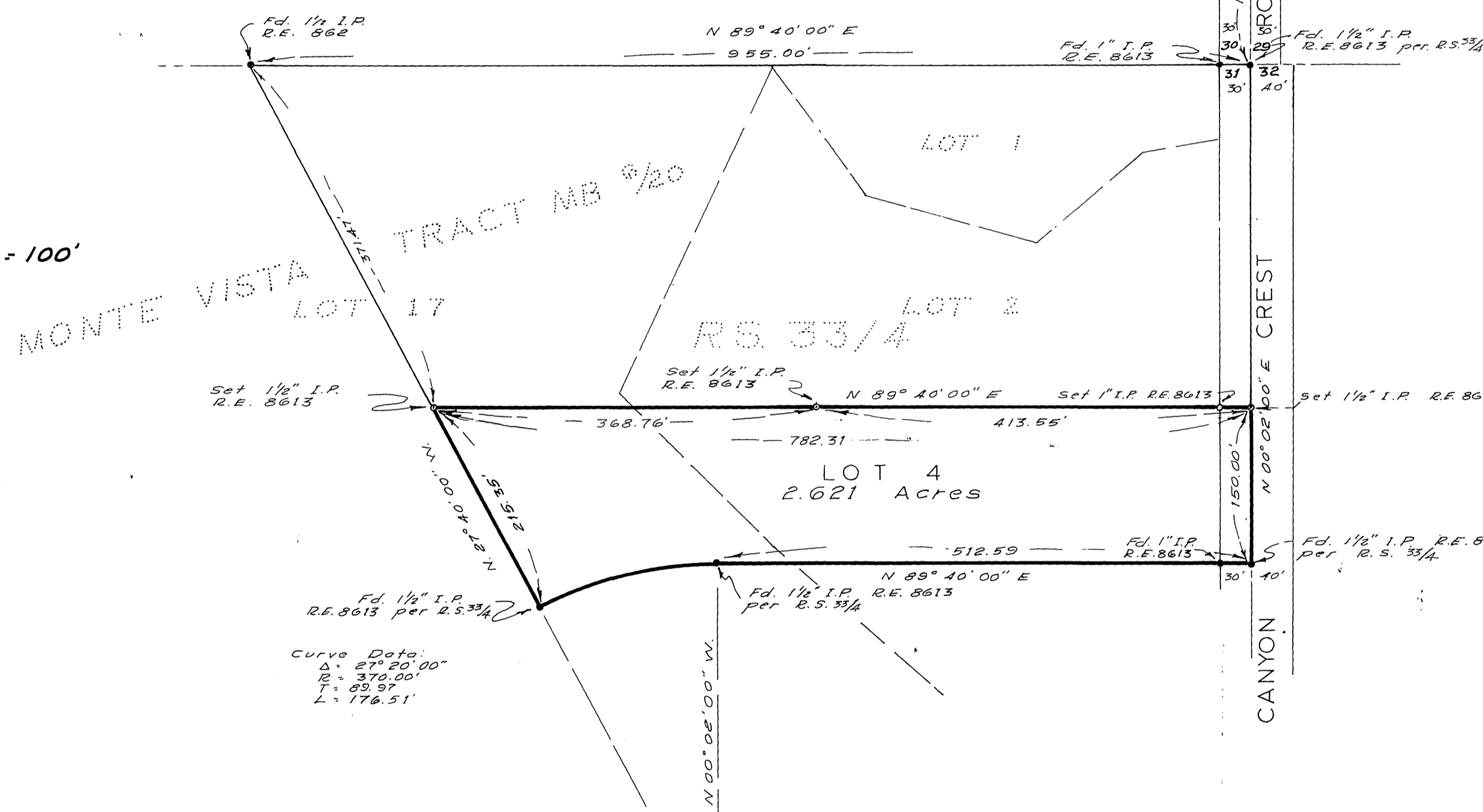
This map has been examined for conformance
 with the requirements of Chapter 15 of Division 3
 of the Business and Professions Code this 9th
 day of January 1961.

A.C. KEITH
 County Surveyor
 By C. T. Worsley
 Deputy

Filed for record at the request of the County
 Surveyor this 9 day of January 1961 at 1:30 P.M.,
 in book 33 of Record of Survey at page 9.

Fee \$ 5.⁰⁰
 No. 1200

Jack A. Ross
 County Recorder
William D. Balogh
 Deputy



SCALE: 1" = 100'

NOTES

- Indicates monuments found as noted
 - Indicates 1/2" iron pipe set and tagged R.E. 8613
 - Indicates 1" iron pipe set and tagged R.E. 8613
- Basis of Bearings is the North line of N.E. 1/4
 of section 31, T. 2 S., R. 4 W., S.B.B. & M. per R.S. 11/4
 N 89° 40' 00" E