

IN COUNTY OF RIVERSIDE RECORD OF SURVEY

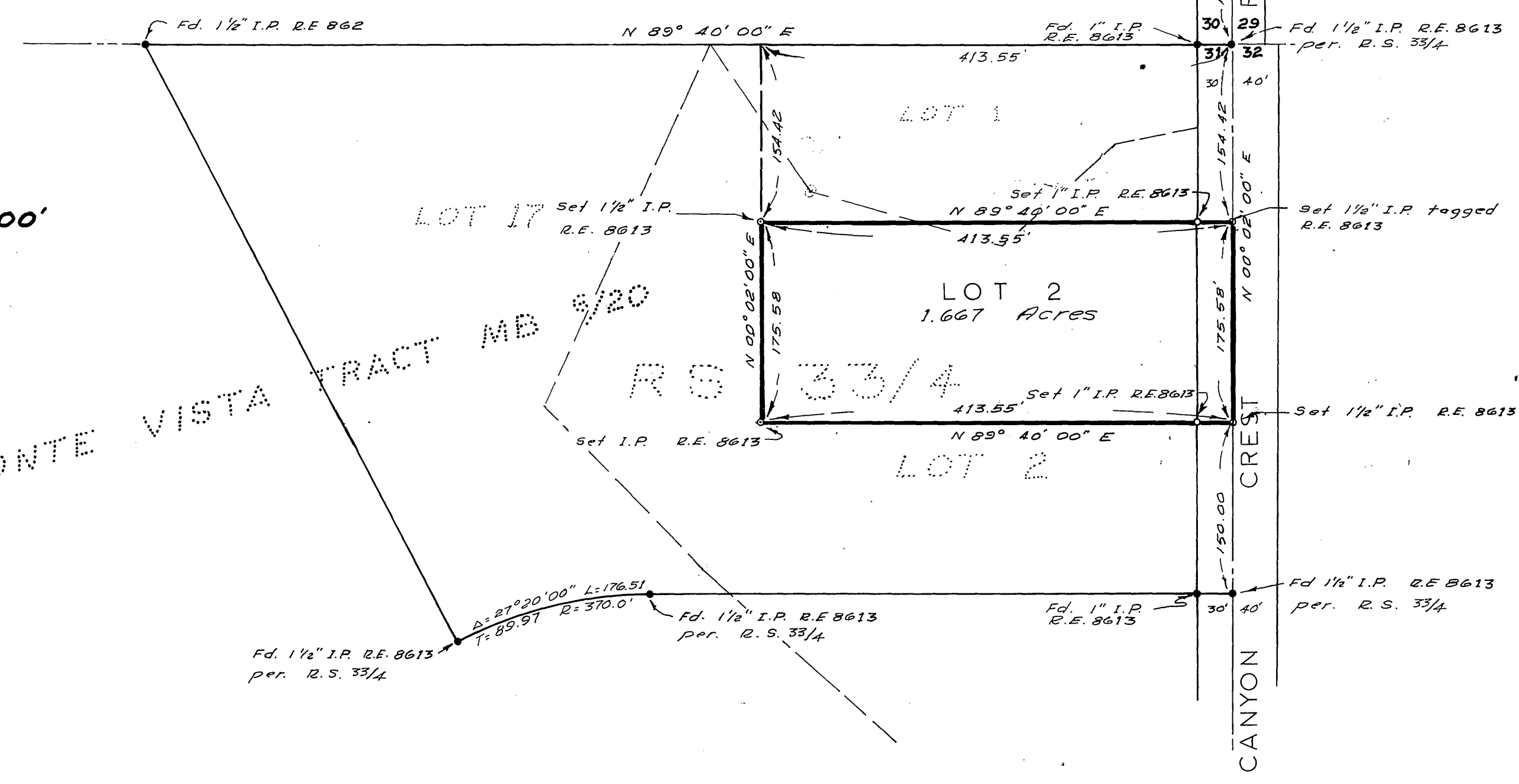
OF A PORTION N.E. 1/4 OF N.E. 1/4 OF SECTION 31 T. 2 S., R. 4 W.,
S.B.B. & M. IN THE COUNTY OF RIVERSIDE. STATE OF
CALIFORNIA.

DECEMBER, 1960

← Pennsylvania Avenue

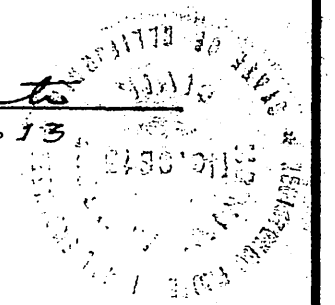
SCALE 1" = 100'

MONTE VISTA TRACT MD 9/20



This map correctly represents a survey made by me or under my direction in conformance with the requirements of Chapter 15 of Division 3 of the Business and Professions Code at the request of the U.S. Forest Service in November 1960.

Norman A. Meats
R.C.E. No. 8613



This map has been examined for conformance with the requirements of Chapter 15, Division 3 of the Business and Professions Code this 9th day of January, 1961.

A.C. Keith
County Surveyor
By G. T. Worley
Deputy

Filed for record at the request of the County Surveyor this 9 day of January, 1961 at 1:30 P.M. in book 33 of record of survey at page 16.
Fee \$ 5.00
No. 1810

NOTES

- — Indicates monuments found as noted.
 - — Indicates 1/2" iron pipe set and tagged R.E. 8613
 - — Indicates 1" iron pipe set and tagged R.E. 8613
- Basis of Bearings is the North line of N.E. 1/4 of section 31, T. 2 S., R. 4 W., S.B.B. & M. per R.S. 11/41.
N. 89° 40' 00" E.

Jack A. Ross
County Recorder
By William D. Balogh
Deputy