

# IN COUNTY OF RIVERSIDE RECORD OF SURVEY

OF A PORTION N.E. 1/4 OF N.E. 1/4 OF SECTION 31 T. 2 S., R. 4 W.,  
S. B. B. & M. IN THE COUNTY OF RIVERSIDE. STATE OF  
CALIFORNIA.

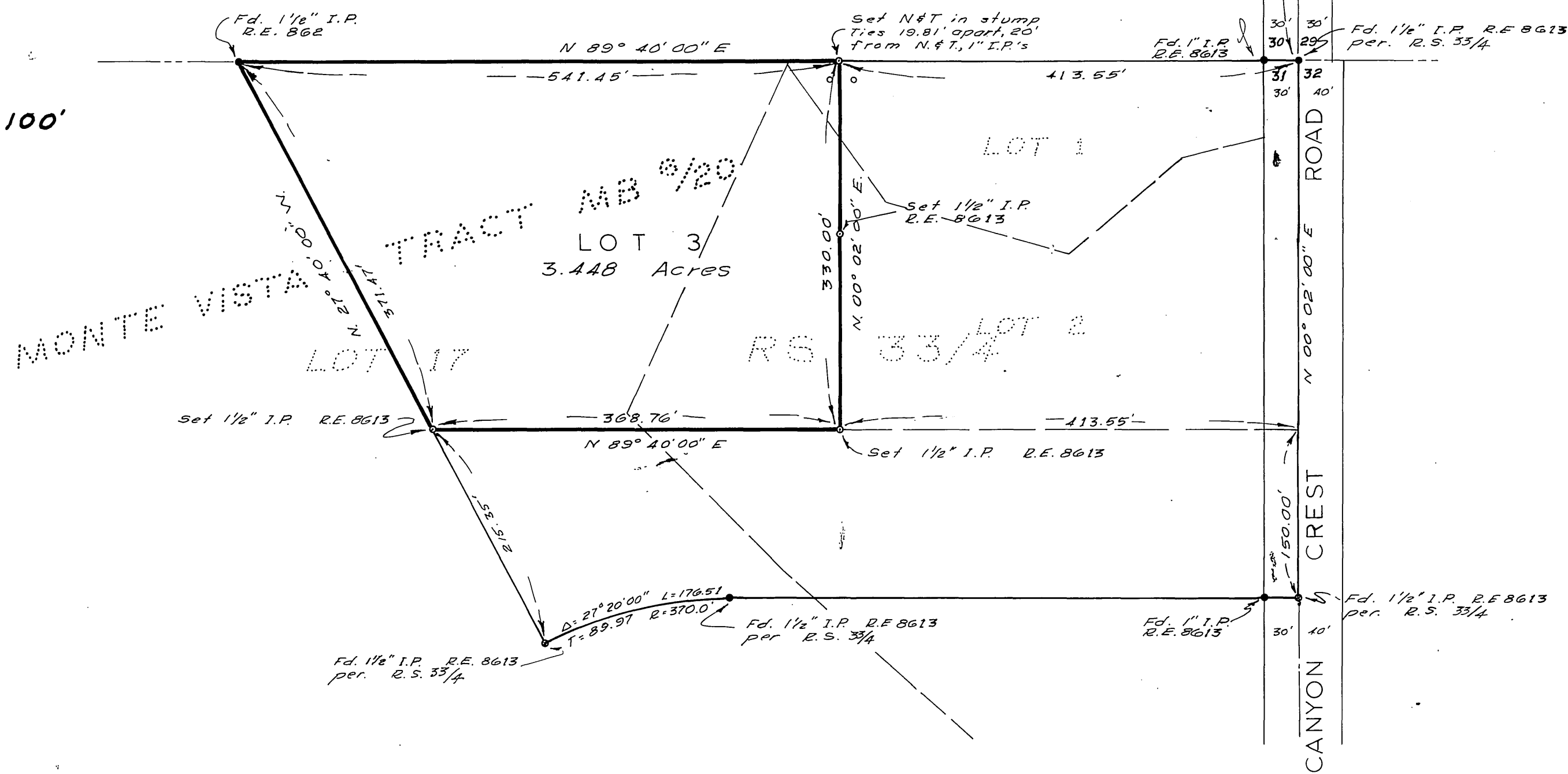
DECEMBER, 1960

← Pennsylvania Avenue

This map correctly represents a survey made by me or under my direction in conformance with the requirements of Chapter 15 of Division 3 of the Business and Professions Code at the request of the U.S. Forest Service in November 1960.

*Thomas A. Diste*  
R.C.E. No. 8613

SCALE 1" = 100'



This map has been examined for conformance with the requirements of Chapter 15 of Division 3 of the Business and Professions Code this 9th day of January 1961

A.C. KEITH  
County Surveyor

By S. T. Worsley  
Deputy

Filed for record at the request of the County Surveyor this 9 day of January 1961 at 1:30 P.M., in book 33 of Record of Survey at page 11.

Fee \$ 5.00  
No. 151

Jack A. Ross  
County Recorder  
By Walter D. Bate  
Deputy

### NOTES

- Indicates monuments found as noted.
  - Indicates 1 1/2" iron pipe set and tagged R.E. 8613
  - Indicates 1" iron pipe set and tagged R.E. 8613
- Basis of Bearings is the North line of N.E. 1/4 of section 31, T. 2 S., R. 4 W., S.B.B. & M. per R.S. 11/11  
N 89° 40' 00" E.