

IN THE CITY OF RIVERSIDE

RECORD OF SURVEY

OF A PORTION OF LOT "B" OF VICTORIA HEIGHTS, MAP BOOK 4, PAGE 92,
RECORDS OF RIVERSIDE COUNTY, CALIFORNIA. - IN T. 2 S. R. 5 W., S. B. B. & M.

JAN. 1961

J. F. DAVIDSON, C. E.

SCALE 1"=60'

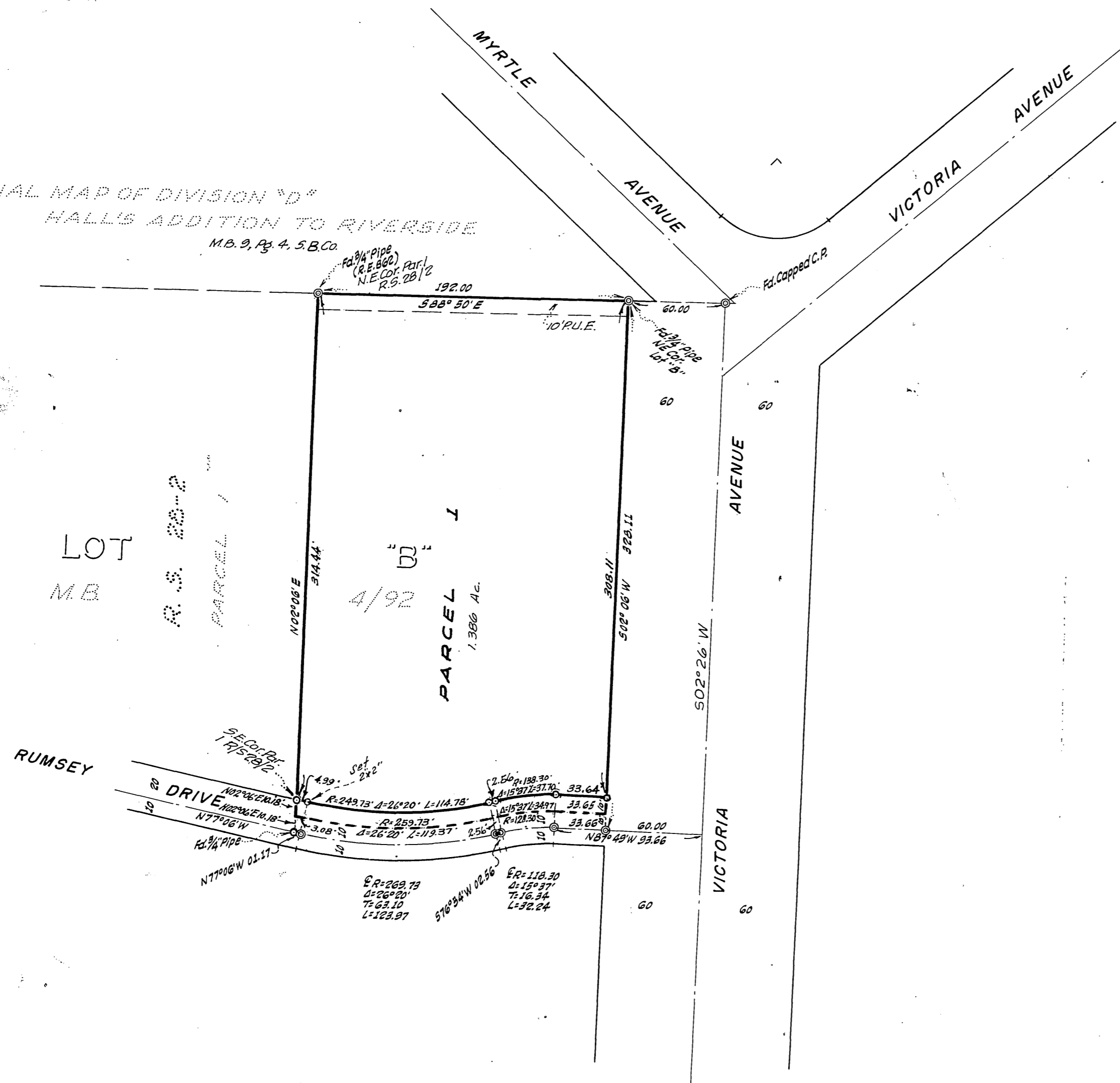
Filed for Record at request of County Surveyor this 23 day of JANUARY, 1961, at Riverside, Cal., in Book 33 of Record of Survey of Page 17
Fee \$ 5.00 No. 5793

JACK A. ROSS County Recorder
By William H. DeLough Deputy



SURVEY MADE AT REQUEST OF DR. MONTE JOHNSTON

FINAL MAP OF DIVISION "D"
HALL'S ADDITION TO RIVERSIDE
M.B. 9, Pg. 4, S.B.C.



ENGINEER'S CERTIFICATE

This map correctly represents a survey made by me or under my direction in conformance with the requirements of Chapter 15 of Division 3 of the Business and Professions Code at the request of DR. MONTE JOHNSTON in May, 1961.

J. F. Davidson
Registered Civil Engineer No. 662

ENGINEER'S NOTE

Bearings are based on the E of RUMSEY DRIVE being N87°49'W as shown on R.S. 28-2, Rec. Riv. Co., Calif.

- ⊙ Indicates S & T with + ties found.
- Indicates 3/4" Pipe tagged R.E. 862 set, unless otherwise noted.

COUNTY SURVEYOR'S CERTIFICATE

This map has been examined for conformance with the requirements of Chapter 15 of Division 3 of the Business and Professions Code this 18th day of JANUARY, 1961.

A. C. KEITH County Surveyor
By A. T. Worsley Deputy
F.B. 672-30
F.D. 575-65 (Ref.)