

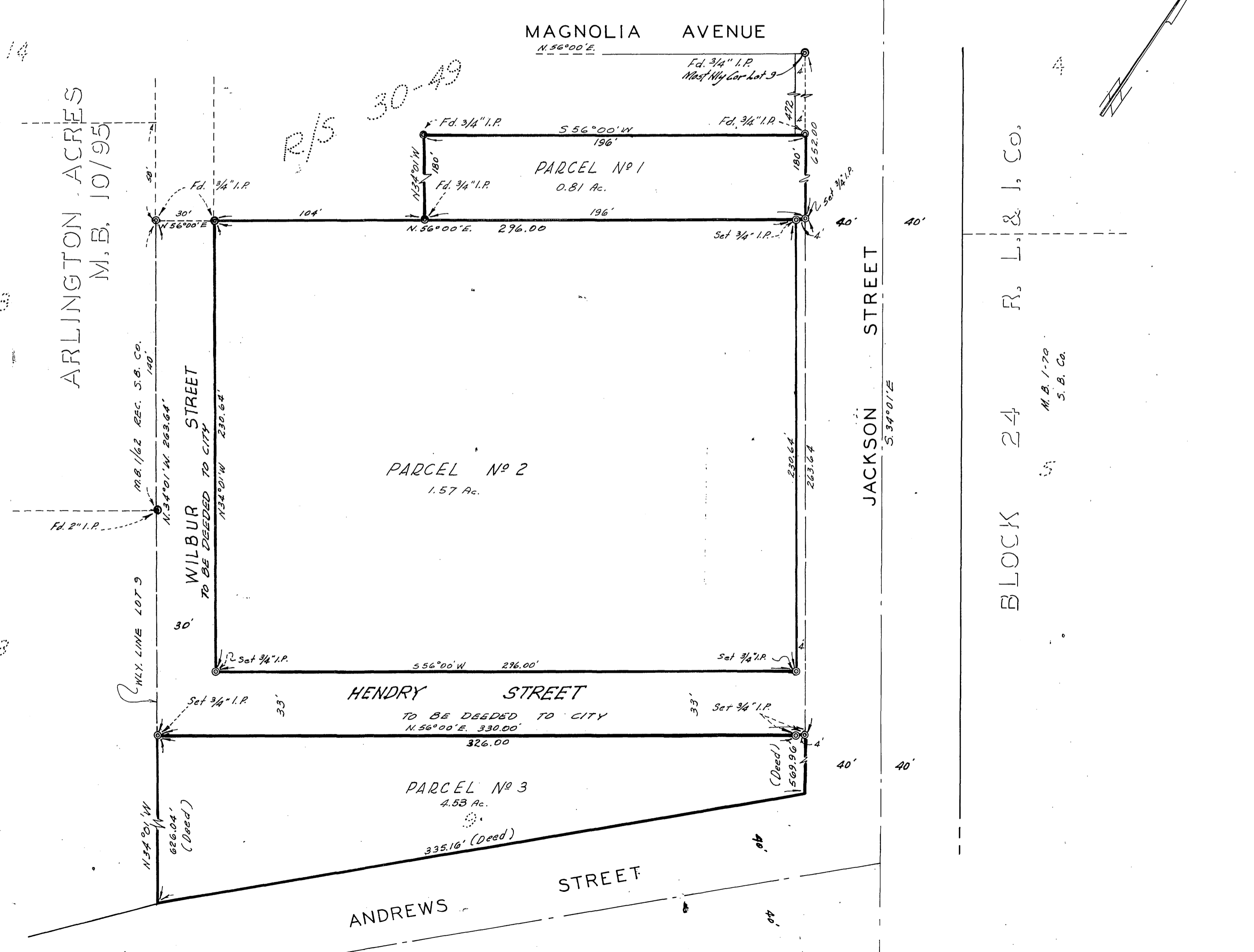
IN THE CITY OF RIVERSIDE RECORD OF SURVEY

OF A PORTION OF LOT 9, BLOCK 25, VILLAGE
OF ARLINGTON, M.B. 1-62 RECORDS OF SAN
BERNARDINO COUNTY CALIFORNIA.

JULY 1960 SCALE 1" = 40'

J. F. DAVIDSON C. E.

Filed for Record of request of County Surveyor this 7 day of
February, 1961 at 10:00 A.M. in Book 33
of Record of Survey of Page 24
Page 51 of No. 10688
JACK A. ROSS County Recorder
By William H. Raleigh Deputy



SURVEY MADE AT THE REQUEST OF:
W. GORDON HENDRY

ENGINEER'S CERTIFICATE

This map correctly represents a survey made by me or under my direction in conformance with the requirements of Chapter 15 of Division 3 of the Business and Professions Code at the request of: W. Gordon Hendry, in September 1960.
J. F. Davidson
Registered Civil Engineer No. 362

ENGINEER'S NOTE

- Bearings are based on the Center Line of JACKSON ST. as being S34°01'E, as shown on Map on file in R/S Book 30, pg. 49 Records of Riverside County, California.
- Parcel 3 was not surveyed, all distances shown here on are compiled from existing records.

COUNTY SURVEYOR'S CERTIFICATE

This map has been examined for conformance with the requirements of Chapter 15 of Division 3 of the Business and Professions Code this 6th day of February, 1961.
A. C. KEITH, County Surveyor
By E. T. Worsley Deputy