

IN THE CITY OF RIVERSIDE

# RECORD OF SURVEY

OF A PORTION OF THE SOUTHWEST 1/4 OF THE NORTHEAST  
1/4 OF THE SOUTHWEST 1/4 OF SECTION 33, T.2S. R.5W. S.B.B. & M.

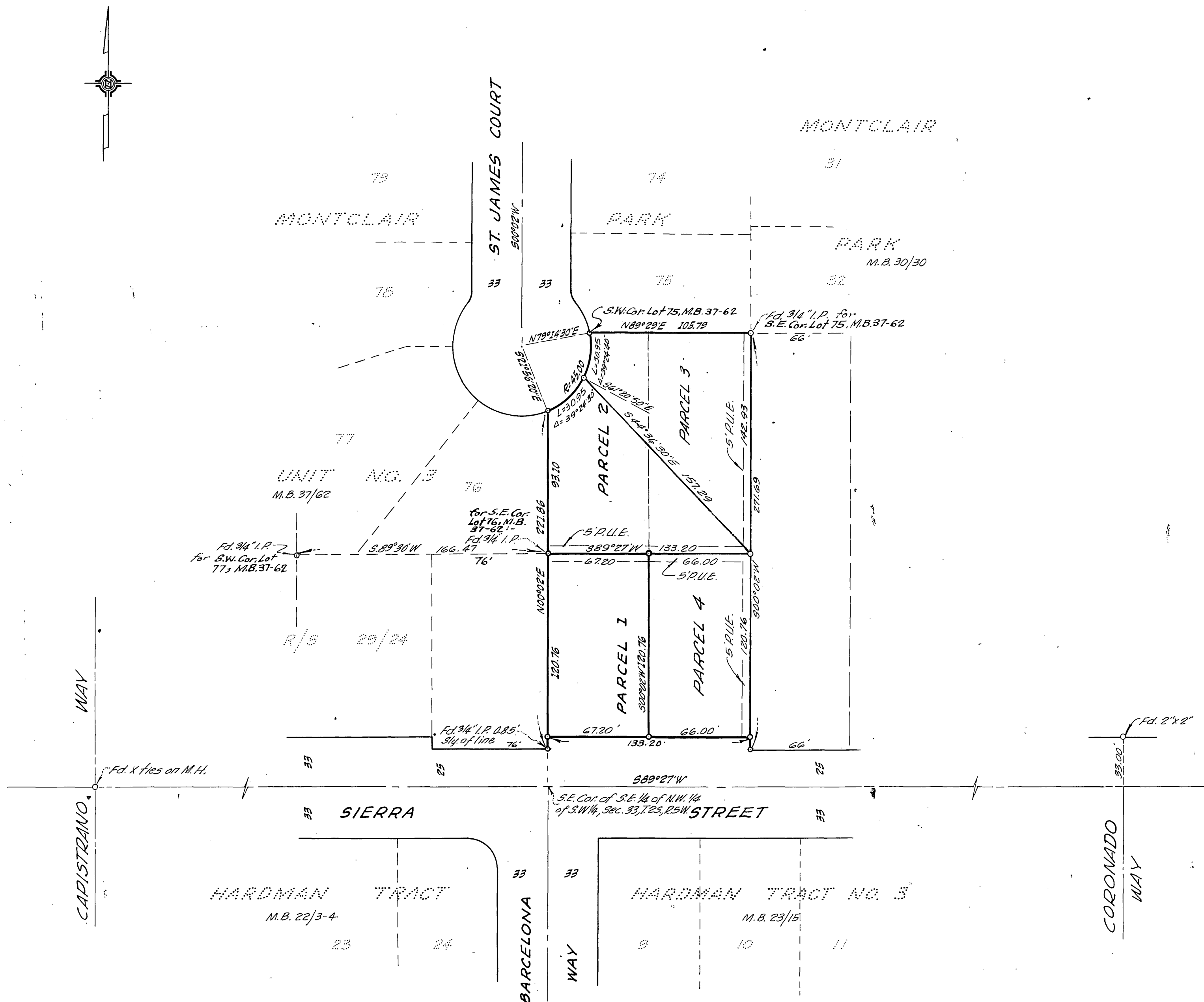
JANUARY 1961

J. F. DAVIDSON C.E.

SCALE 1" = 50'

Filed for Record at request of County Surveyor this 7 day of  
February, 1961 at 1:00 P.M. in Book 33  
of Record of Survey at Page 27  
Fee \$ 5.00 No. 10700  
JACK A. ROSS County Recorder  
By William H. Balogh Deputy

SURVEY MADE AT THE REQUEST OF LUELLA A. BRIDENSTINE  
AND JACK NEEL



### ENGINEER'S CERTIFICATE

This map correctly represents a survey made by me or under my direction in conformance with the requirements of Chapter 15 of Division 3 of the Business and Professions Code at the request of Luella A. Bridenstine in February, 1960.

J. F. Davidson  
Registered Civil Engineer No. 862

### ENGINEER'S NOTE

Bearings are based on the E. of SIERRA STREET being S89°27'W as shown on Record of Survey 29/24 Records of Riverside County, California.

Set 3/4" Iron Pipe, tagged R.E. 862, at all points shown thus unless noted otherwise.

### COUNTY SURVEYOR'S CERTIFICATE

This map has been examined for conformance with the requirements of Chapter 15 of Division 3 of the Business and Professions Code this 6th day of February, 1961.  
A.C. KEITH County Surveyor

By P. T. Woodley Deputy