

IN THE CITY OF RIVERSIDE

# RECORD OF SURVEY

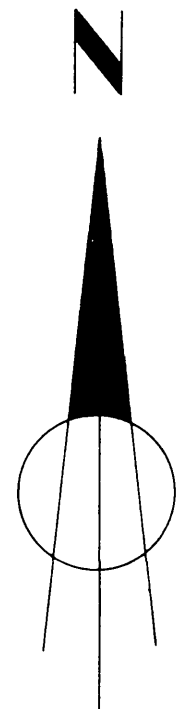
OF A PORTION OF LOT 92 OF HALLS ADDITION, DIVISION C  
MAP BOOK 9, PAGE 3, RECORDS OF SAN BERNARDINO COUNTY, CALIF.  
IN SECTIONS 26 AND 35, T.2S., R.5W., S.B.D. & M.

2BY2  
ALBERT A. WEBB ASSOCIATES  
CIVIL ENGINEERS  
SEPTEMBER 1960

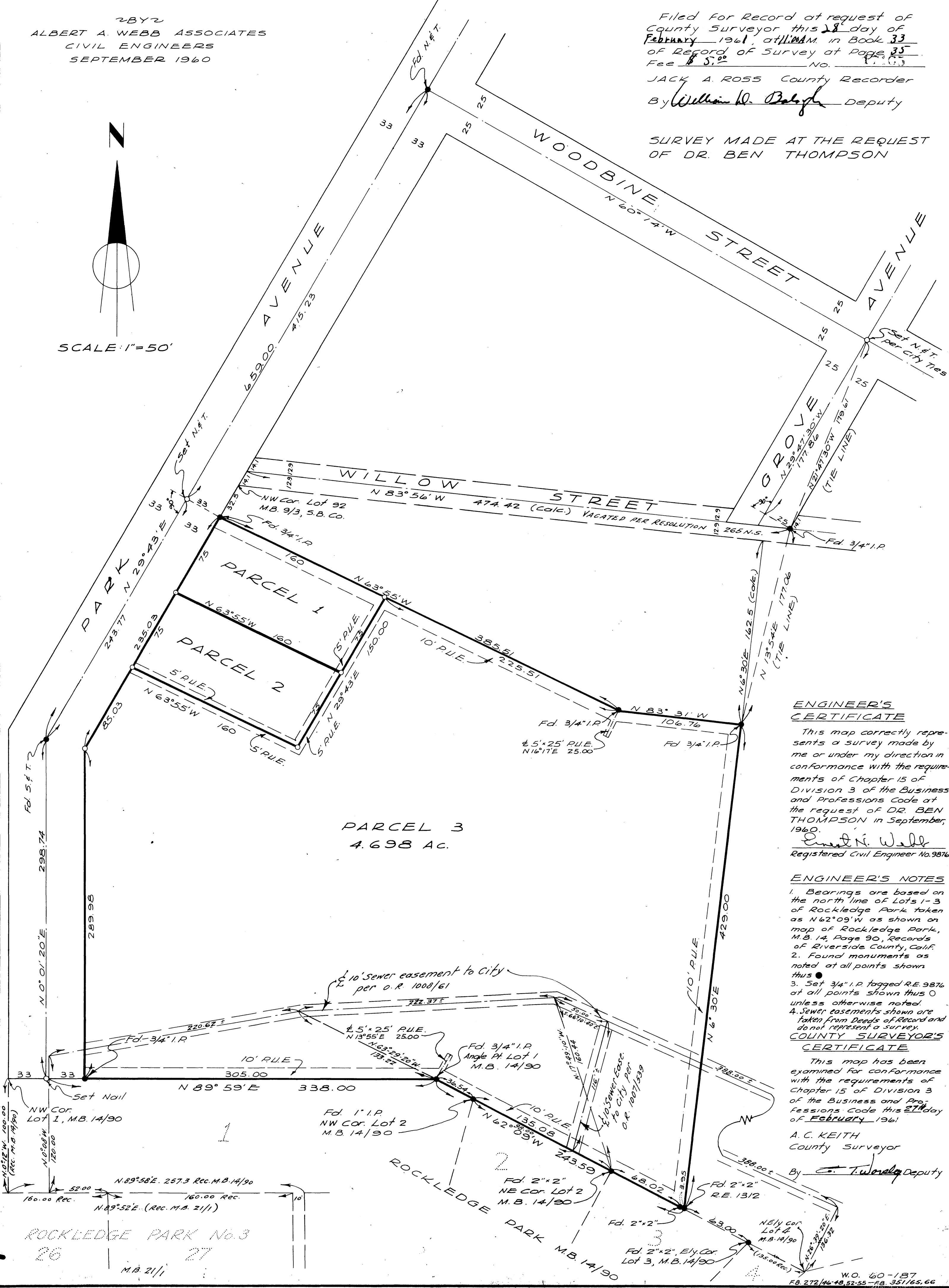
Filed for Record at request of  
County Surveyor this 28 day of  
February 1961, at 11:00 AM in Book 33  
of Record of Survey at Page 35  
Fee \$ 5.00 No. 17786

JACK A. ROSS County Recorder  
By *William H. Balogh* Deputy

SURVEY MADE AT THE REQUEST  
OF DR. BEN THOMPSON



SCALE: 1"=50'



### ENGINEER'S CERTIFICATE

This map correctly represents a survey made by me or under my direction in conformance with the requirements of Chapter 15 of Division 3 of the Business and Professions Code at the request of DR. BEN THOMPSON in September, 1960.

*Albert A. Webb*  
Registered Civil Engineer No. 9876

### ENGINEER'S NOTES

- Bearings are based on the north line of Lots 1-3 of Rockledge Park taken as N62°09'W as shown on map of Rockledge Park, M.B. 14, Page 90, Records of Riverside County, Calif.
- Found monuments as noted at all points shown thus 0
- Set 3/4" I.P. tagged R.E. 9876 at all points shown thus 0 unless otherwise noted.
- Sewer easements shown are taken from Deeds of Record and do not represent a survey.

### COUNTY SURVEYOR'S CERTIFICATE

This map has been examined for conformance with the requirements of Chapter 15 of Division 3 of the Business and Professions Code this 27th day of February 1961

A. C. KEITH  
County Surveyor  
By *E. T. Swartz* Deputy

RS33/35