

IN THE CITY OF RIVERSIDE

RECORD OF SURVEY

OF A PORTION OF LOTS 44 AND 45 OF BLOCK 12 OF VILLAGE OF ARLINGTON, M. B. 1, PAGE 62, RECORDS OF SAN BERNARDINO COUNTY, CALIF.

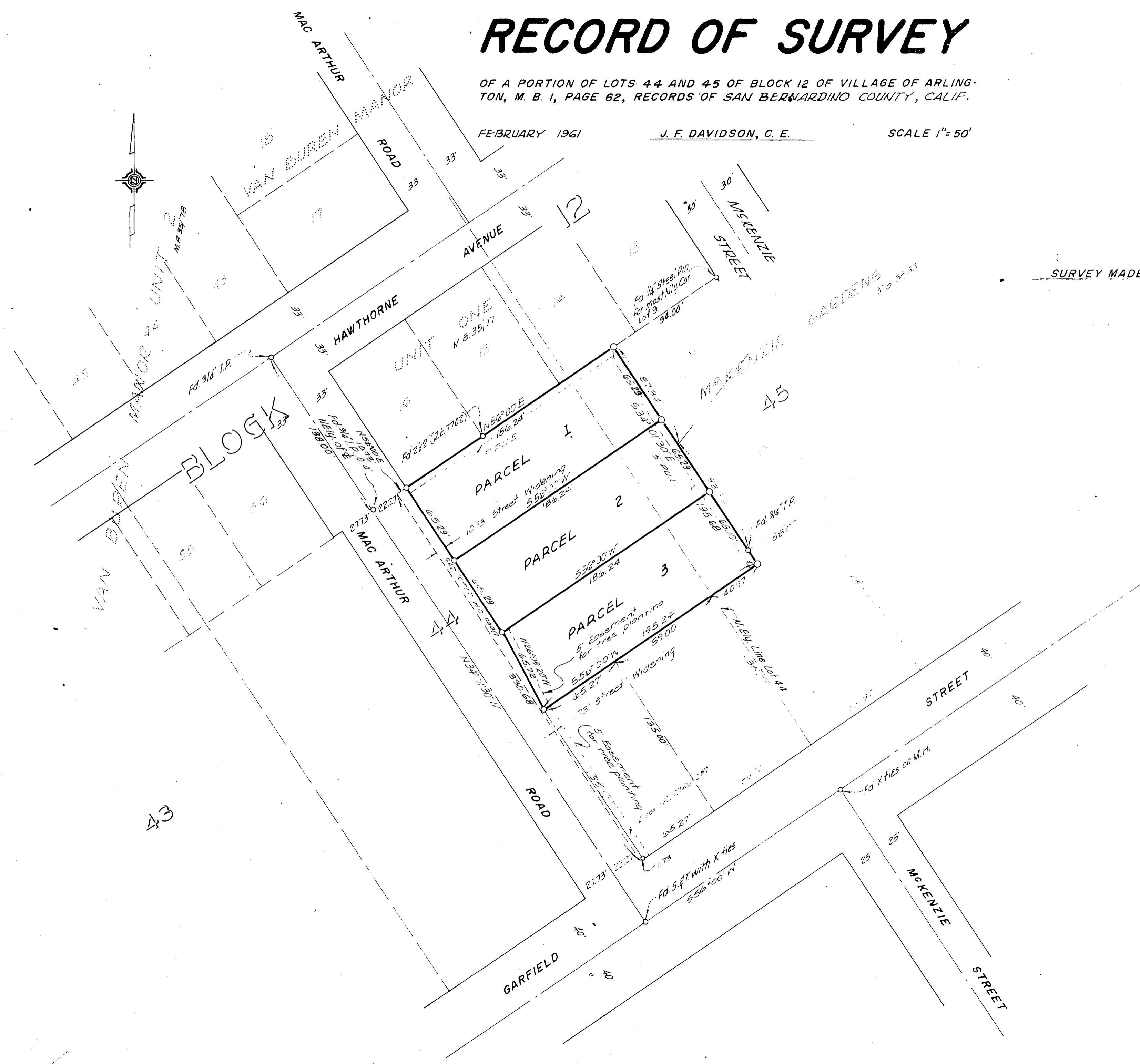
FEBRUARY 1961

J. F. DAVIDSON, C. E.

SCALE 1" = 50'

Filed for Record at request of County Surveyor this 1 day of March, 1961 at 11:30 A.M. in Book 33
 of Record of Survey of Page 39
 Fee \$ 51.⁰⁰ No. 11100
 JACK A. ROSS County Recorder
 by William D. Ralph Deputy

SURVEY MADE AT THE REQUEST OF PETER A. NEBEKER



ENGINEER'S CERTIFICATE

This map correctly represents a survey made by me or under my direction in conformance with the requirements of Chapter 15 of Division 3 of the Business and Professions Code at the request of Peter A. Nebeker on April, 1960.

J. F. Davidson
 Registered Civil Engineer No. 662

ENGINEER'S NOTE

Bearings are based on the center line of MAC ARTHUR ROAD being N 34° 20' 30" W as shown on map of "VAN BUREN MANOR UNIT ONE" M. B. 35/77, Records of Riverside County, Calif.

Set 2" x 2" Redwood stakes, pointed yellow and tagged R.E. B62 at all points shown thus

COUNTY SURVEYOR'S CERTIFICATE

This map has been examined for conformance with the requirements of Chapter 15 of Division 3 of the Business and Professions Code this 1st day of March, 1961

A. C. KEITH County Surveyor

By G. T. Worsley Deputy

F.B. 672 Pgs 70-72