

IN THE CITY OF RIVERSIDE

RECORD OF SURVEY

OF A PORTION OF LOT 2 OF LANDS OF THE SOUTHERN CALIFORNIA COLONY ASSOCIATION, AS SHOWN IN MAP BOOK 7, AT PAGE 3, RECORDS OF SAN BERNARDINO COUNTY, CALIFORNIA

FEBRUARY 1961

J.F. DAVIDSON, C.E.

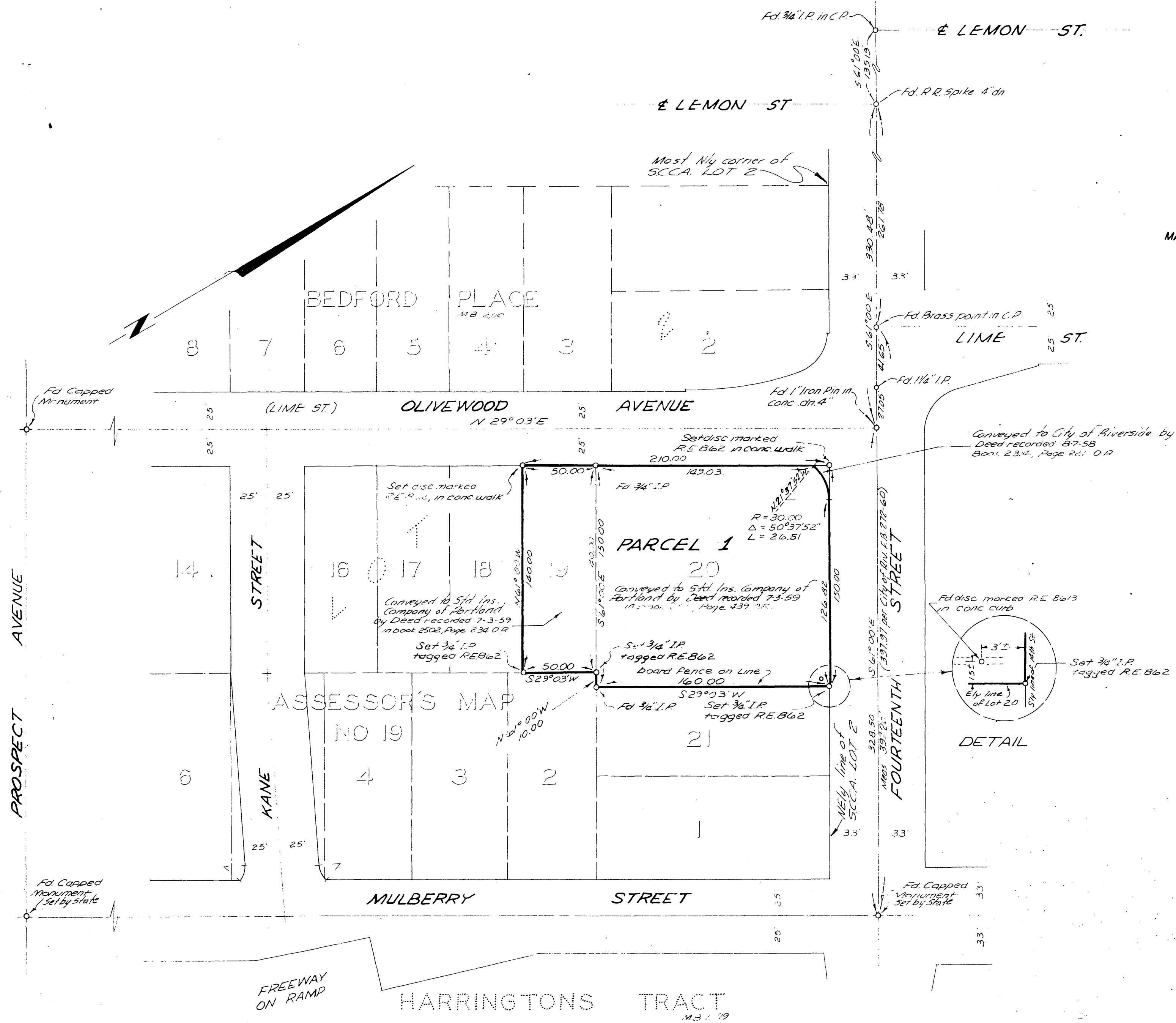
SCALE 1"=50'

Filed for Record at request of County Surveyor this 2 day of March, 1961 at 10:15 A.M. in Book 33 of Record of Survey of Page 44
Fee \$ 5.00 No. _____

JACK A. ROSS County Recorder

By William E. Balogh Deputy

MADE AT THE REQUEST OF STANDARD INSURANCE OF PORTLAND



ENGINEER'S CERTIFICATE

This map correctly represents a survey made by me or under my direction in conformance with the requirements of Chapter 15 of Division 3 of the Business and Professions Code and the rules of the Board of Surveyors of the State of California, effective July 1, 1959.

J. F. Davidson
Registered Civil Engineer No. 862

ENGINEER'S NOTE

Bearings are based on the center line of FOURTEENTH STREET, being S 105° 42' 30" W, 126.82' from the intersection of HARRINGTONS TRACT M.B. 1119 Records of Riverside County, California.

COUNTY SURVEYOR'S CERTIFICATE

This map has been examined in conformance with the requirements of Chapter 15 of Division 3 of the Business and Professions Code this 2 day of March, 1961.

A.C. KEITH County Surveyor

By A. T. Worsley Deputy